



SUBURBAN SPRAWL

VOCABULARY

EXAMPLE



**MATCH THE FOLLOWING PICTURES
WITH THE TERMS BELOW...**

SITCOM SUBURB – SNOOT HOUSE – VALHALLA

EXAMPLE DEFINITIONS

A- an attractive town adopted as a favorite spot by the super-rich may not be obvious as sprawl, but it will attract starter castles and experience tear downs.

B- a neighborhood where protruding garages take up most of the street frontage, minimize the lawns, and eliminate easy surveillance of children's play.

C- traditional houses with neat front lawns constructed since the 1950s, similar to those featured on *Ozzie and Harriet*, *Leave It to Beaver*, and *Father Knows Best*.

**MATCH THE NAME WITH
THE CORRECT IMAGE**

***Match the term below with the correct images
on slides A-P.***

___1. Asphalt nation

___2. Ball pork

___3. Big box

___4. Boomburb

___5. Clustered world

___6. Edge nodes

___7. Greenfield

___8. Gridlock

___9. Leapfrog

___10. Litter on a stick

___11. Logo building

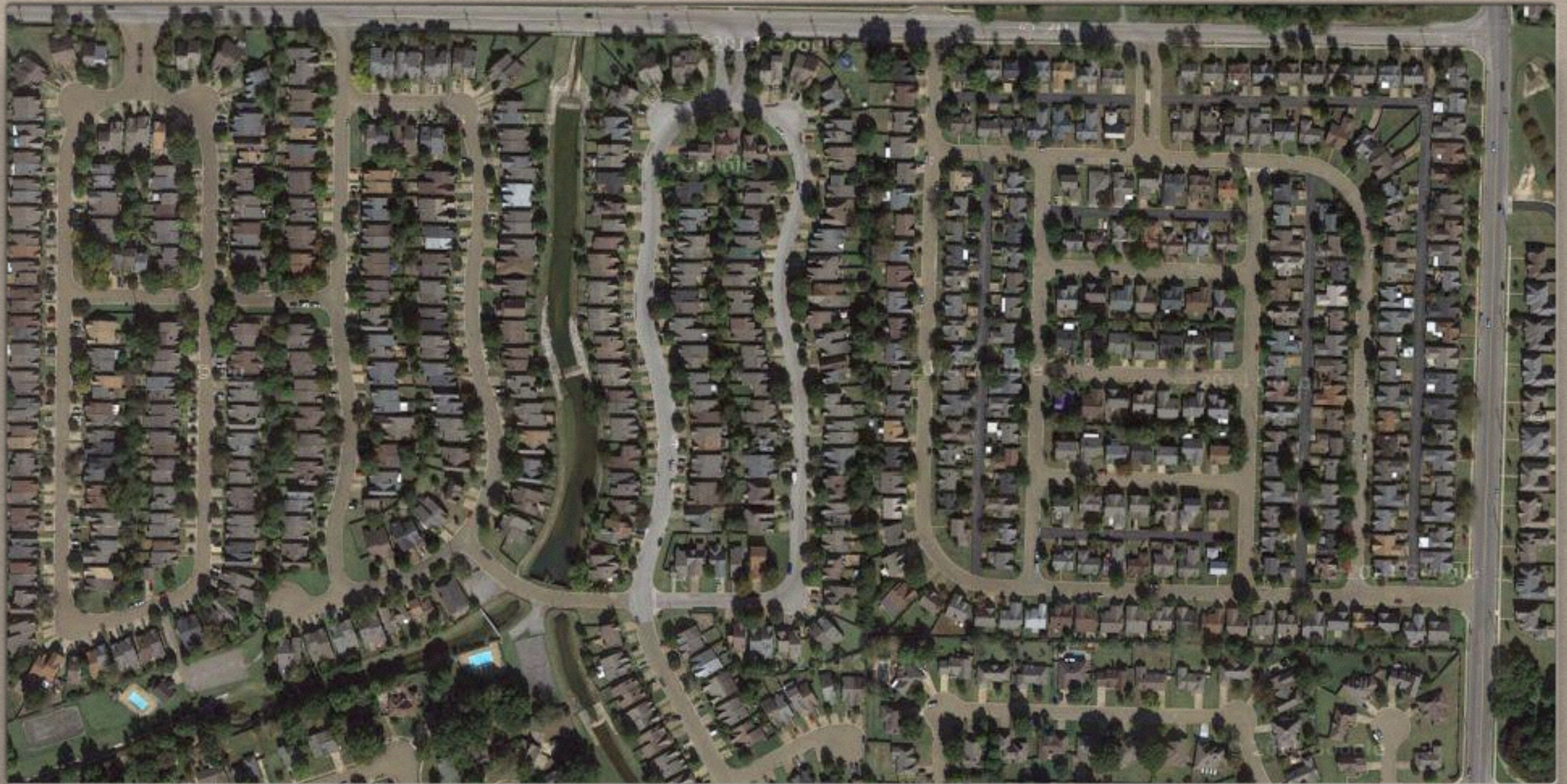
___12. LULU

___13. Mall glut

___14. Pork chop lot

___15. Privatopia

___16. Tract mansion



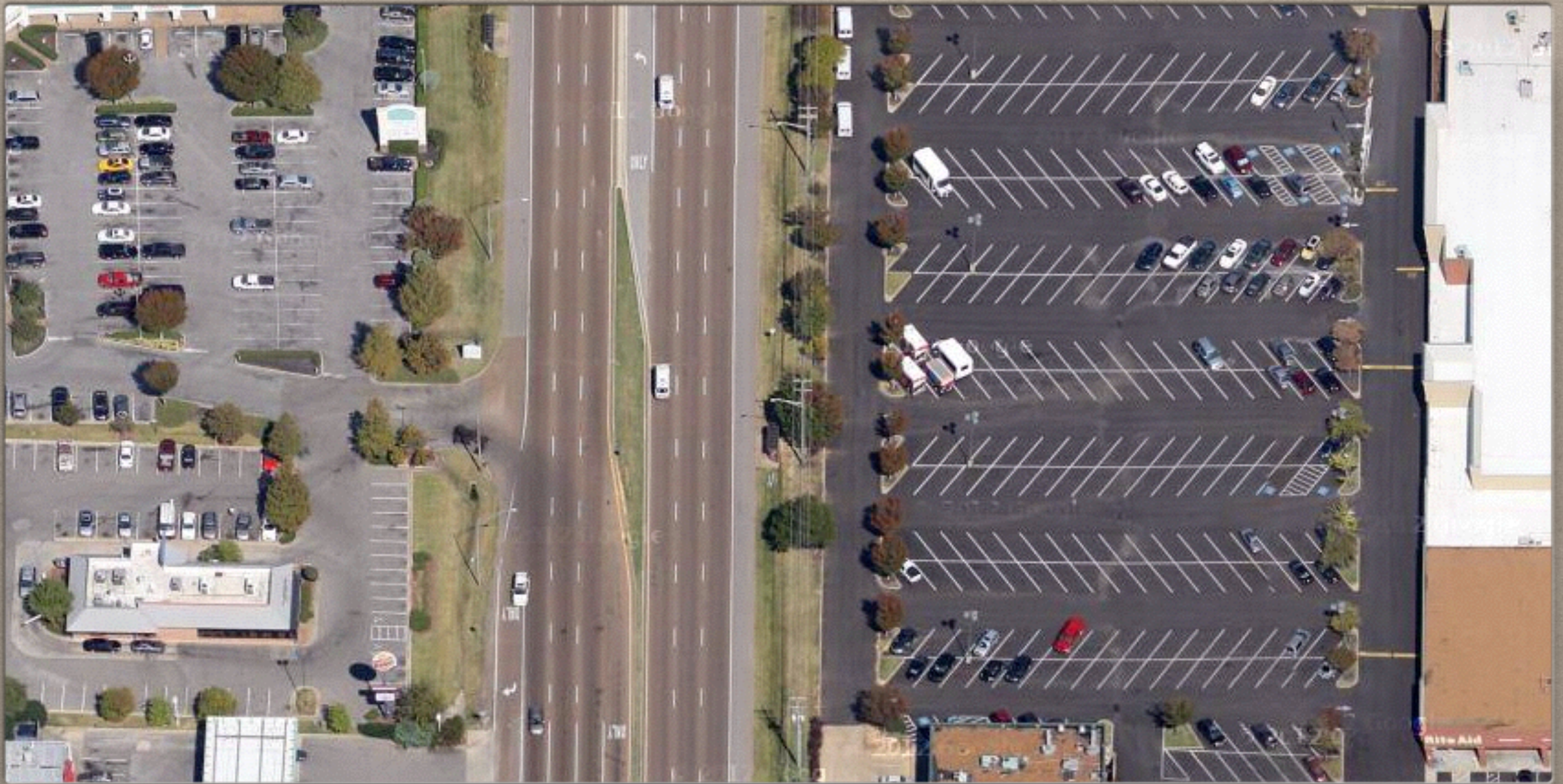
Asphalt nation - Ball park - Big Box - Boomburb - Clustered world
Edge nodes - Greenfield - Gridlock - Leapfrog - Litter on a stick
Logo building - LULU - Mall glut - Pork chop lot - Privatopia - Tract mansion

A



Asphalt nation - Ball park - Big Box - Boomburb - Clustered world
Edge nodes - Greenfield - Gridlock - Leapfrog - Litter on a stick
Logo building - LULU - Mall glut - Pork chop lot - Privatopia - Tract mansion

B



Asphalt nation - Ball park - Big Box - Boomburb - Clustered world
Edge nodes - Greenfield - Gridlock - Leapfrog - Litter on a stick
Logo building - LULU - Mall glut - Pork chop lot - Privatopia - Tract mansion





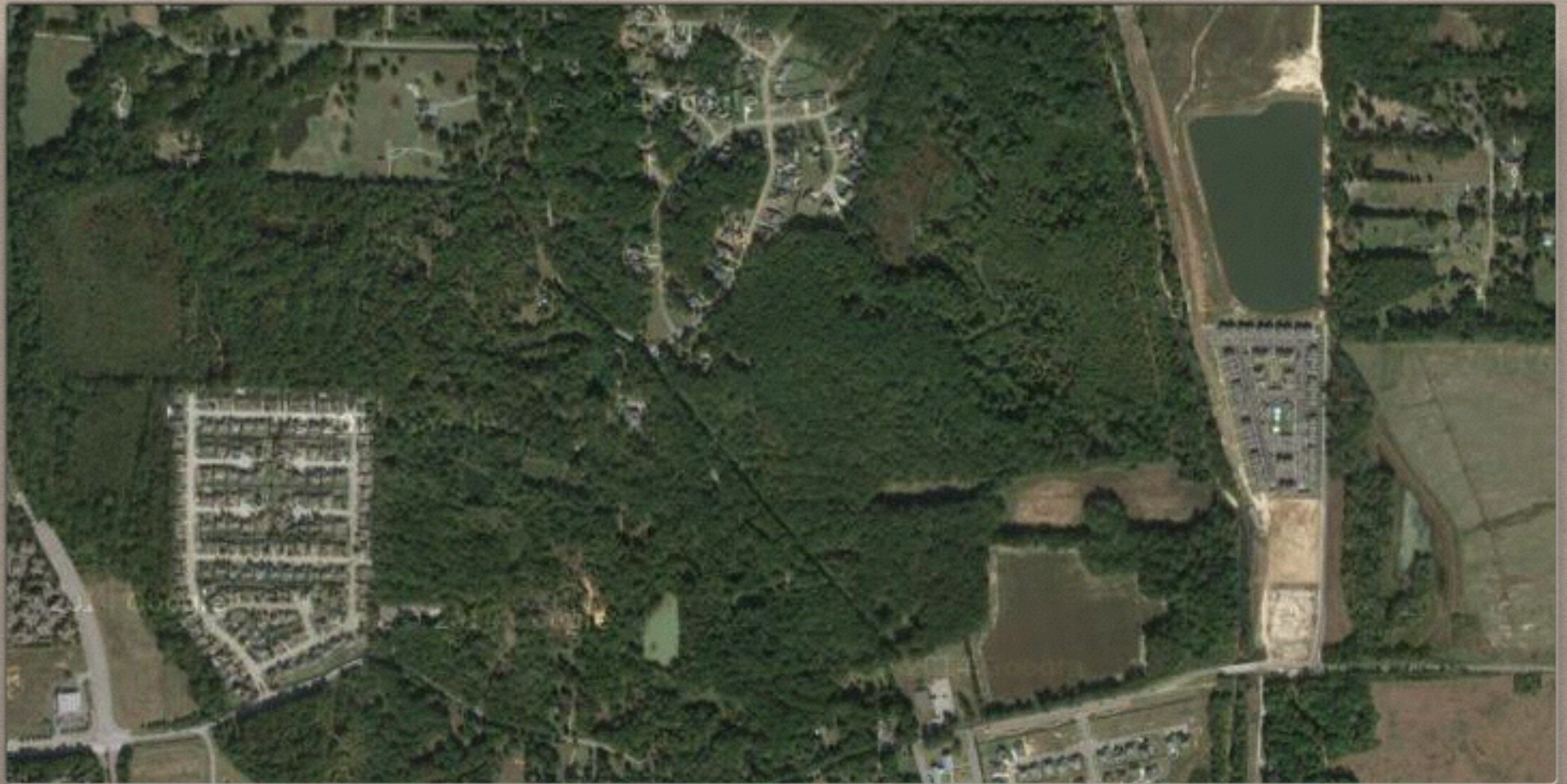
Asphalt nation - Ball park - Big Box - Boomburb - Clustered world
Edge nodes - Greenfield - Gridlock - Leapfrog - Litter on a stick
Logo building - LULU - Mall glut - Pork chop lot - Privatopia - Tract mansion

D



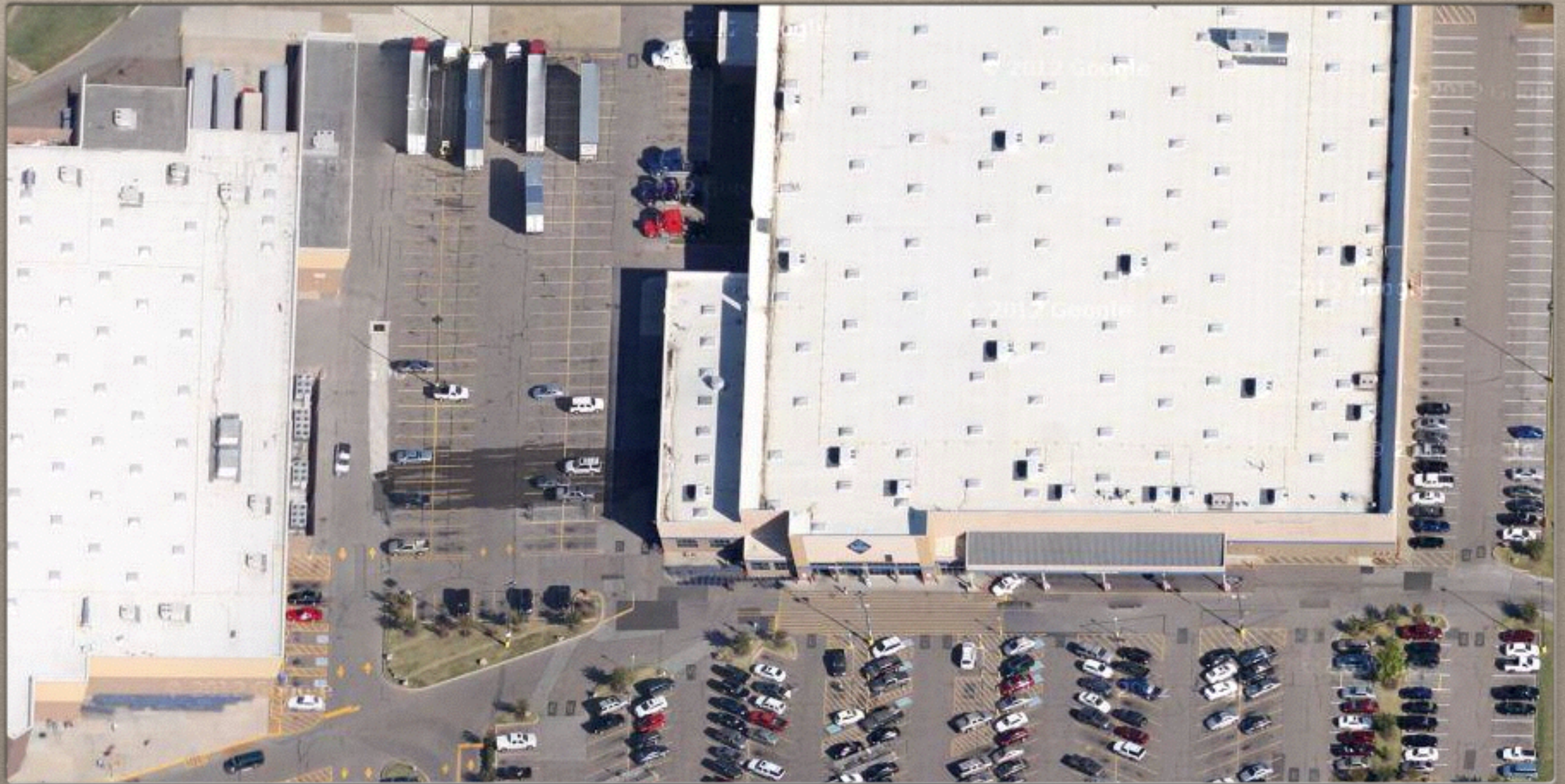
Asphalt nation - Ball park - Big Box - Boomburb - Clustered world
Edge nodes - Greenfield - Gridlock - Leapfrog - Litter on a stick
Logo building - LULU - Mall glut - Pork chop lot - Privatopia - Tract mansion

E



Asphalt nation - Ball park - Big Box - Boomburb - Clustered world
Edge nodes - Greenfield - Gridlock - Leapfrog - Litter on a stick
Logo building - LULU - Mall glut - Pork chop lot - Privatopia - Tract mansion

F



Asphalt nation - Ball park - Big Box - Boomburb - Clustered world
Edge nodes - Greenfield - Gridlock - Leapfrog - Litter on a stick
Logo building - LULU - Mall glut - Pork chop lot - Privatopia - Tract mansion





Asphalt nation - Ball park - Big Box - Boomburb - Clustered world
Edge nodes - Greenfield - Gridlock - Leapfrog - Litter on a stick
Logo building - LULU - Mall glut - Pork chop lot - Privatopia - Tract mansion

H



Asphalt nation - Ball park - Big Box - Boomburb - Clustered world
Edge nodes - Greenfield - Gridlock - Leapfrog - Litter on a stick
Logo building - LULU - Mall glut - Pork chop lot - Privatopia - Tract mansion





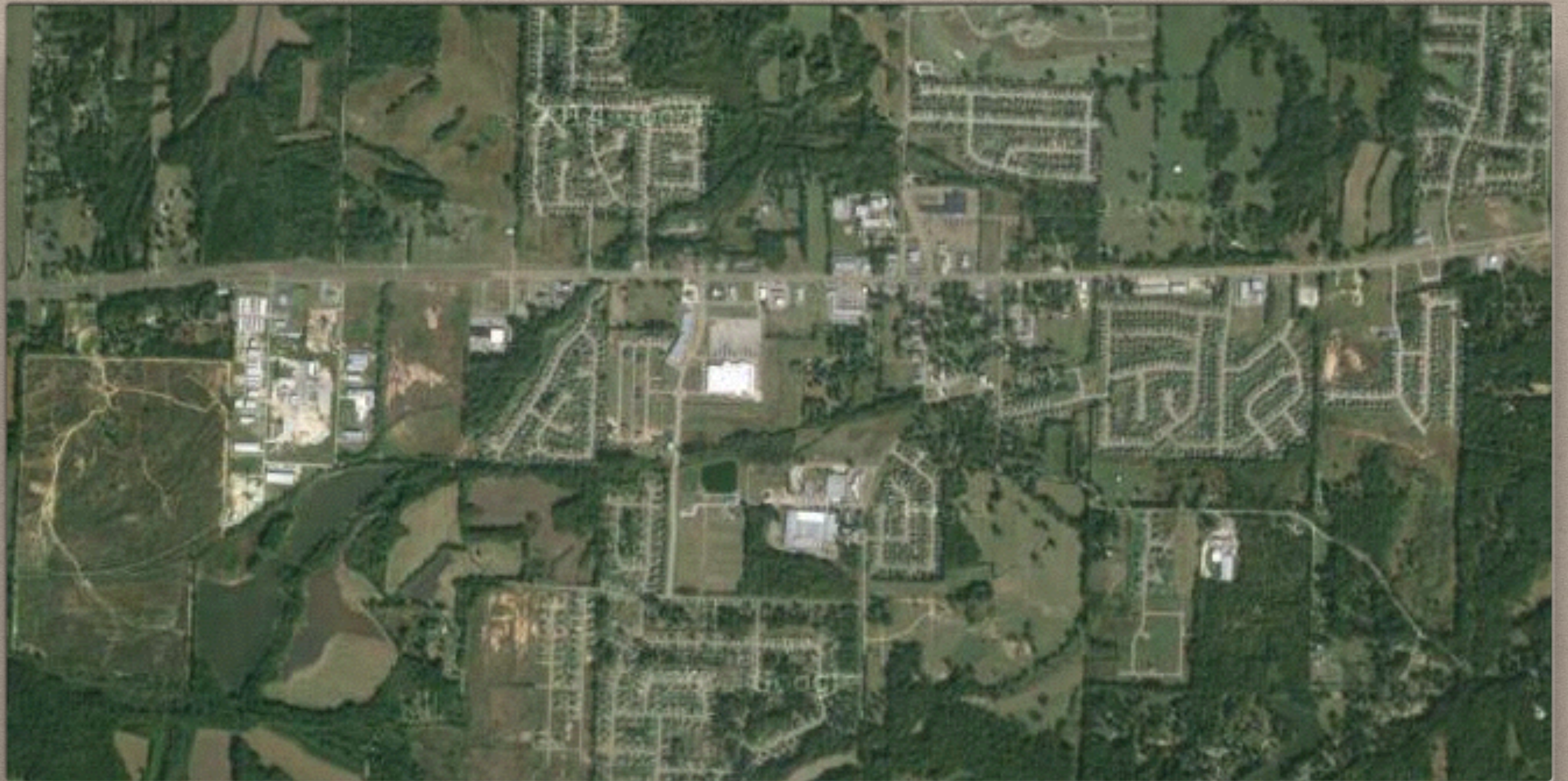
Asphalt nation - Ball park - Big Box - Boomburb - Clustered world
Edge nodes - Greenfield - Gridlock - Leapfrog - Litter on a stick
Logo building - LULU - Mall glut - Pork chop lot - Privatopia - Tract mansion

J



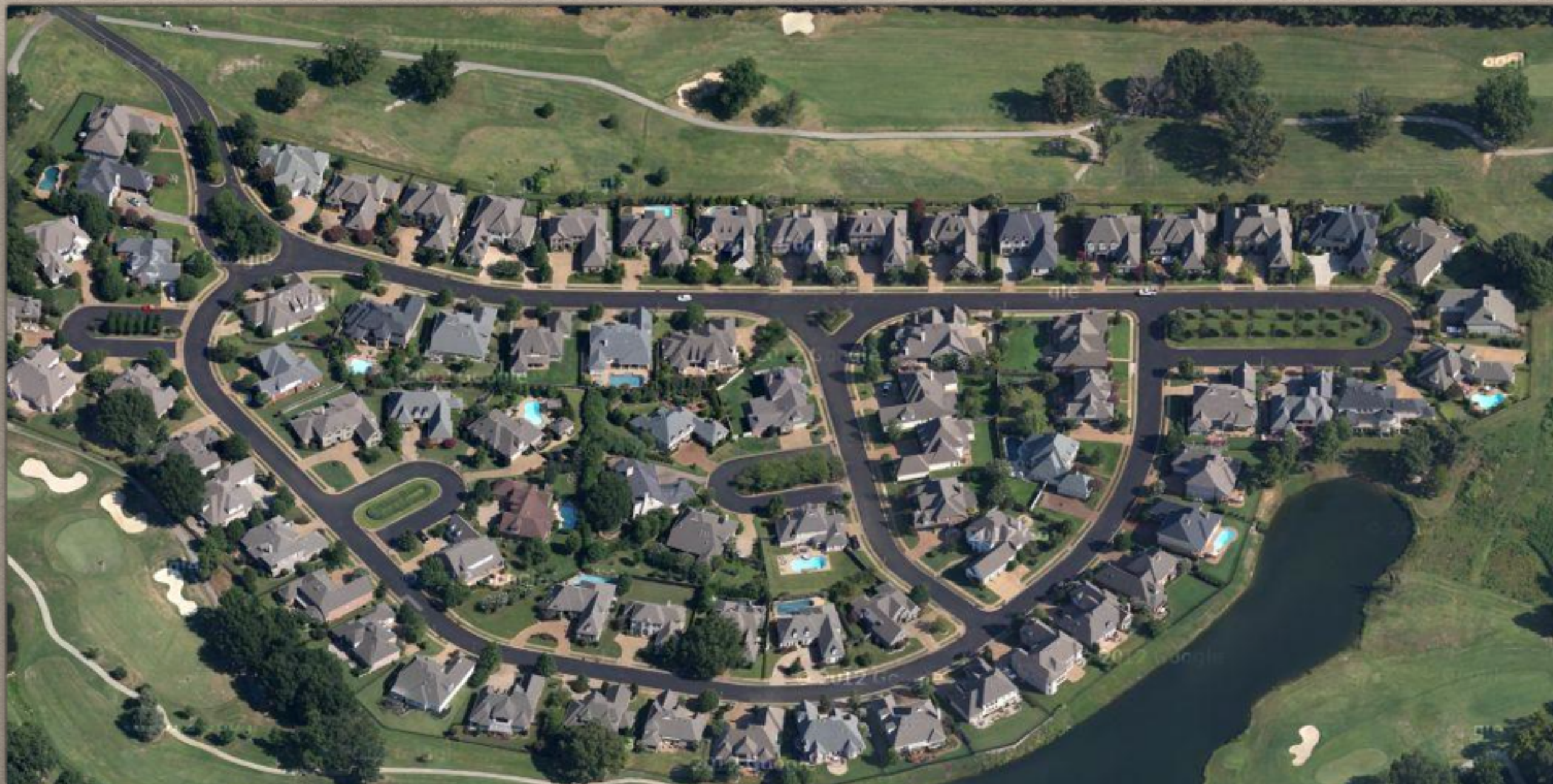
Asphalt nation - Ball park - Big Box - Boomburb - Clustered world
Edge nodes - Greenfield - Gridlock - Leapfrog - Litter on a stick
Logo building - LULU - Mall glut - Pork chop lot - Privatopia - Tract mansion

K



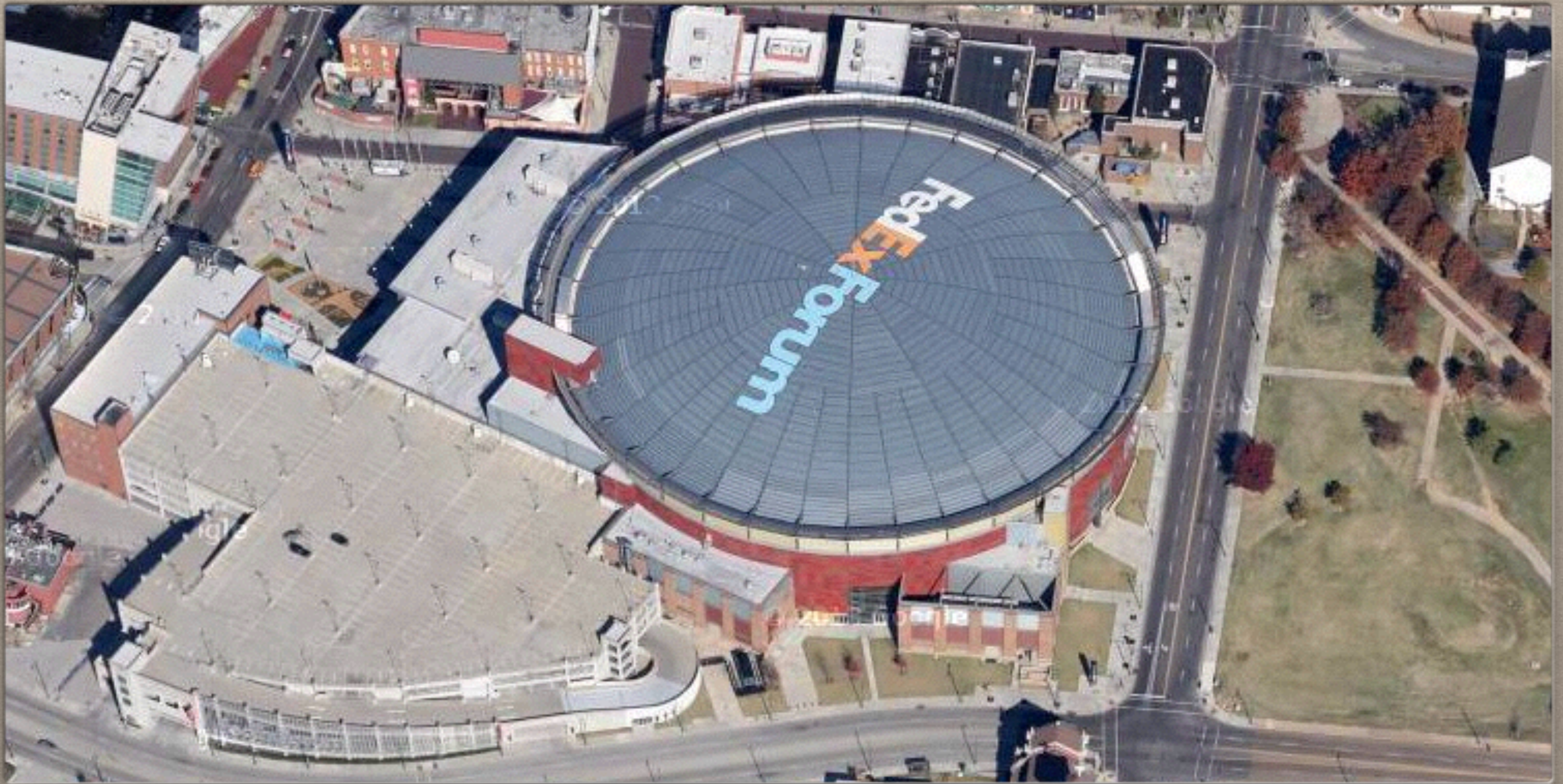
Asphalt nation - Ball park - Big Box - Boomburb - Clustered world
Edge nodes - Greenfield - Gridlock - Leapfrog - Litter on a stick
Logo building - LULU - Mall glut - Pork chop lot - Privatopia - Tract mansion





Asphalt nation - Ball park - Big Box - Boomburb - Clustered world
Edge nodes - Greenfield - Gridlock - Leapfrog - Litter on a stick
Logo building - LULU - Mall glut - Pork chop lot - Privatopia - Tract mansion

M

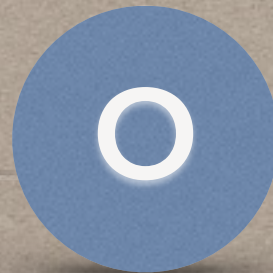


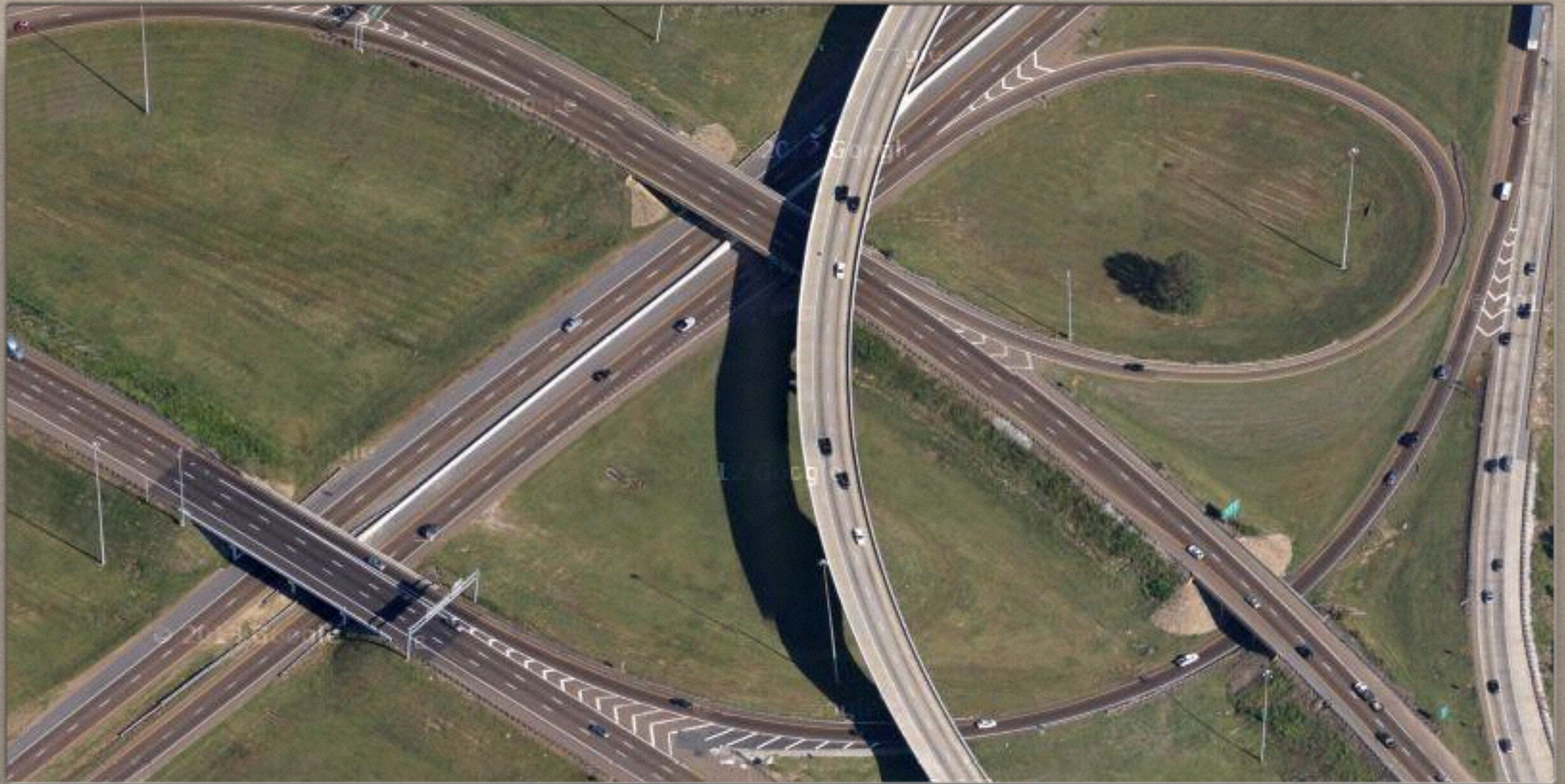
Asphalt nation - Ball park - Big Box - Boomburb - Clustered world
Edge nodes - Greenfield - Gridlock - Leapfrog - Litter on a stick
Logo building - LULU - Mall glut - Pork chop lot - Privatopia - Tract mansion





Asphalt nation - Ball park - Big Box - Boomburb - Clustered world
Edge nodes - Greenfield - Gridlock - Leapfrog - Litter on a stick
Logo building - LULU - Mall glut - Pork chop lot - Privatopia - Tract mansion





Asphalt nation - Ball park - Big Box - Boomburb - Clustered world
Edge nodes - Greenfield - Gridlock - Leapfrog - Litter on a stick
Logo building - LULU - Mall glut - Pork chop lot - Privatopia - Tract mansion

P

Before checking answers use the descriptions / definitions on the next slide to help with deterring the best match between the term and the photos marked A-P.

DESCRIPTIONS / DEFINITIONS

THE DESCRIPTIONS / DEFINITIONS A-P MATCH
WITH THE CORRESPONDING SLIDES A-P.

- A. a rapidly growing, urban-sized place in the suburbs; places with more than 100,000 residents that are not the largest cities in their respective metropolitan area.
- B. slang term for billboards.
- C. the paved-over United States; car culture.
- D. nickname for an interior lot requiring a long driveway to reach the main part o the property.
- E. a project constructed on raw land, usually agricultural land.
- F. development that skips over empty land; sometimes this occurs to avoid local land use regulation.
- G. gigantic, windowless structure, usually of cheap, concrete block construction, typically sited next to an arterial or near a freeway interchange with high traffic volume; favored by retail chains and discount buyers.
- H. a large, expensive house constructed among homes that are very similar by a subdivider who builds on speculation.
- I. term referring to the 40,000 shopping centers holding 19 square feet of retail space per citizen, twice that of any other country.
- J. a system to divide Americans into marketing clusters that take their names from residential stereotypes, e.g., "Pools and Patios" or "Kids and Cul-de-Sacs.
- K. buildings designed as a trademark so that drivers can spot them from a distance.
- L. growth areas of commercial real estate; also referred to as edge or edgeless cities.
- M. a community-of-interest development where residents are legally bound to obey the covenants, conditions, and restrictions of a homeowner association.
- N. a stadium built with public funds for the use of a privately owned ball team.
- O. locally unwanted land use that creates a problem for people because of the way it looks, smells, sounds, or pollutes the environment.
- P. results from extended commutes when housing and workplaces are far apart, as well as from single-use zoning that forces people to drive long distances between housing, workplaces, and basic neighborhood services; contributes to air pollution.

***Match the term below with the correct images
on slides A-P.***

___1. Asphalt nation

___2. Ball pork

___3. Big box

___4. Boomburb

___5. Clustered world

___6. Edge nodes

___7. Greenfield

___8. Gridlock

___9. Leapfrog

___10. Litter on a stick

___11. Logo building

___12. LULU

___13. Mall glut

___14. Pork chop lot

___15. Privatopia

___16. Tract mansion

Student Assignment

- Select a suburban area close to where you live.
- Using Google Maps find and print out **FIVE** examples from your selected suburban area that match up with five different terms defined in the lesson.
- **For each of your five examples:**
 - Write out the term it is illustrating.
 - Describe the area in 2-3 sentences.