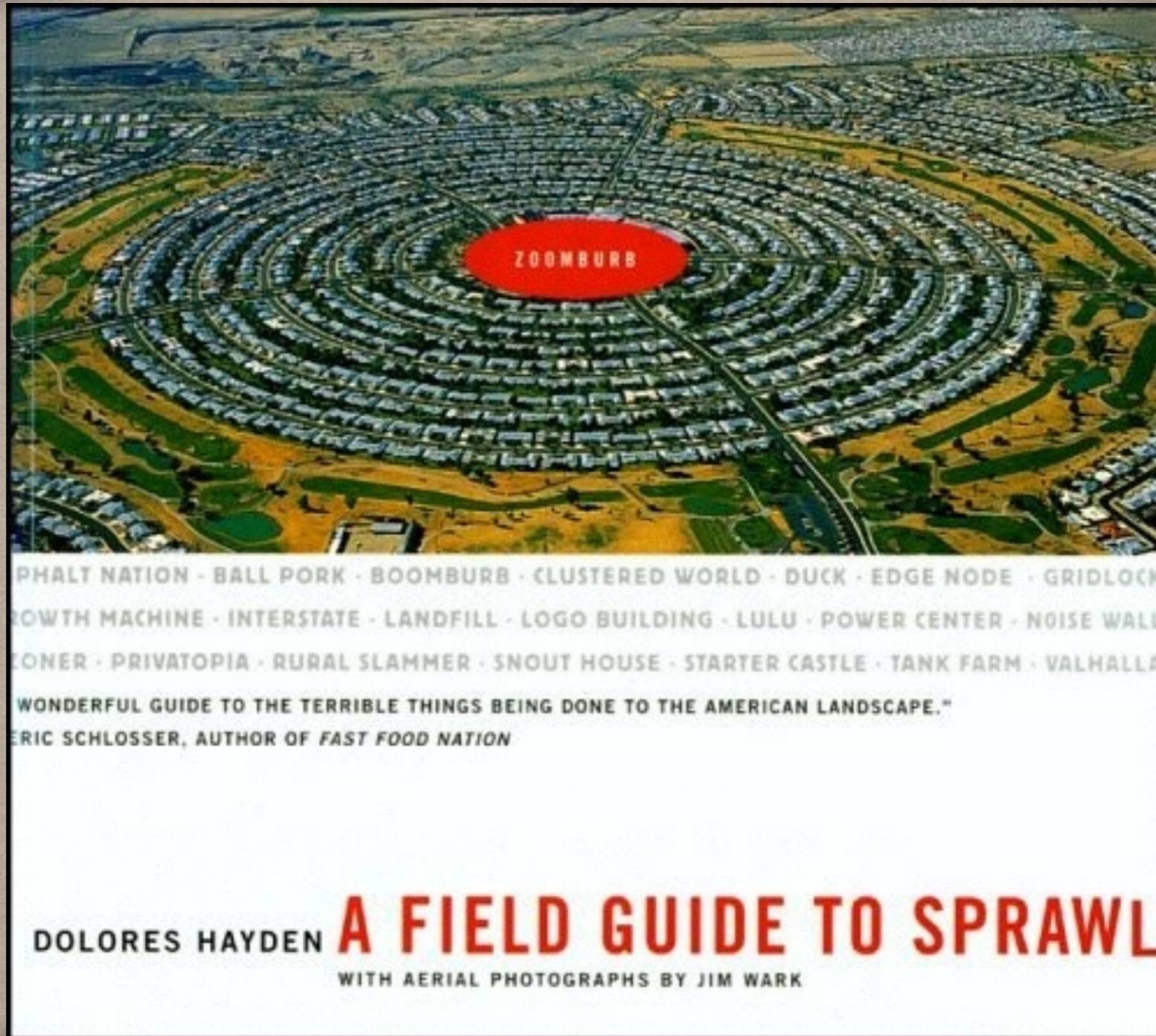




SUBURBAN SPRAWL

VOCABULARY

A Field Guide To Sprawl



EXAMPLE



A



B



C

**MATCH THE FOLLOWING PICTURES
WITH THE TERMS BELOW...**

SITCOM SUBURB – SNOOT HOUSE – VALHALLA

EXAMPLE DEFINITIONS

A- an attractive town adopted as a favorite spot by the super-rich may not be obvious as sprawl, but it will attract starter castles and experience tear downs.

B- a neighborhood where protruding garages take up most of the street frontage, minimize the lawns, and eliminate easy surveillance of children's play.

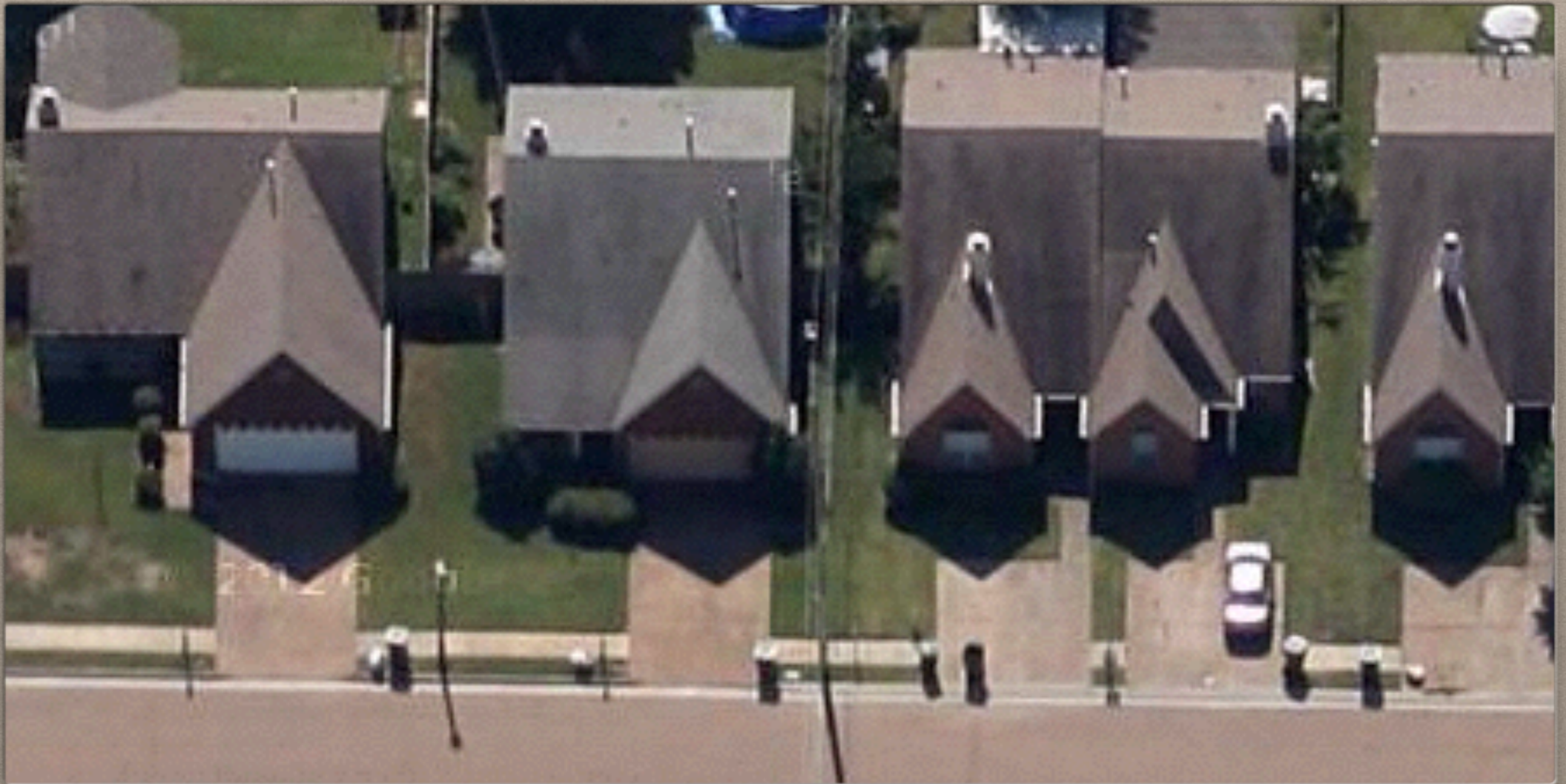
C- traditional houses with neat front lawns constructed since the 1950s, similar to those featured on *Ozzie and Harriet*, *Leave It to Beaver*, and *Father Knows Best*.



VALHALLA

an attractive town adopted as a favorite spot by the super-rich may not be obvious as sprawl, but it will attract starter castles and experience tear downs.





SNOUT HOUSE

a neighborhood where protruding garages take up most of the street frontage, minimize the lawns, and eliminate easy surveillance of children's play.



SITCOM SUBURB

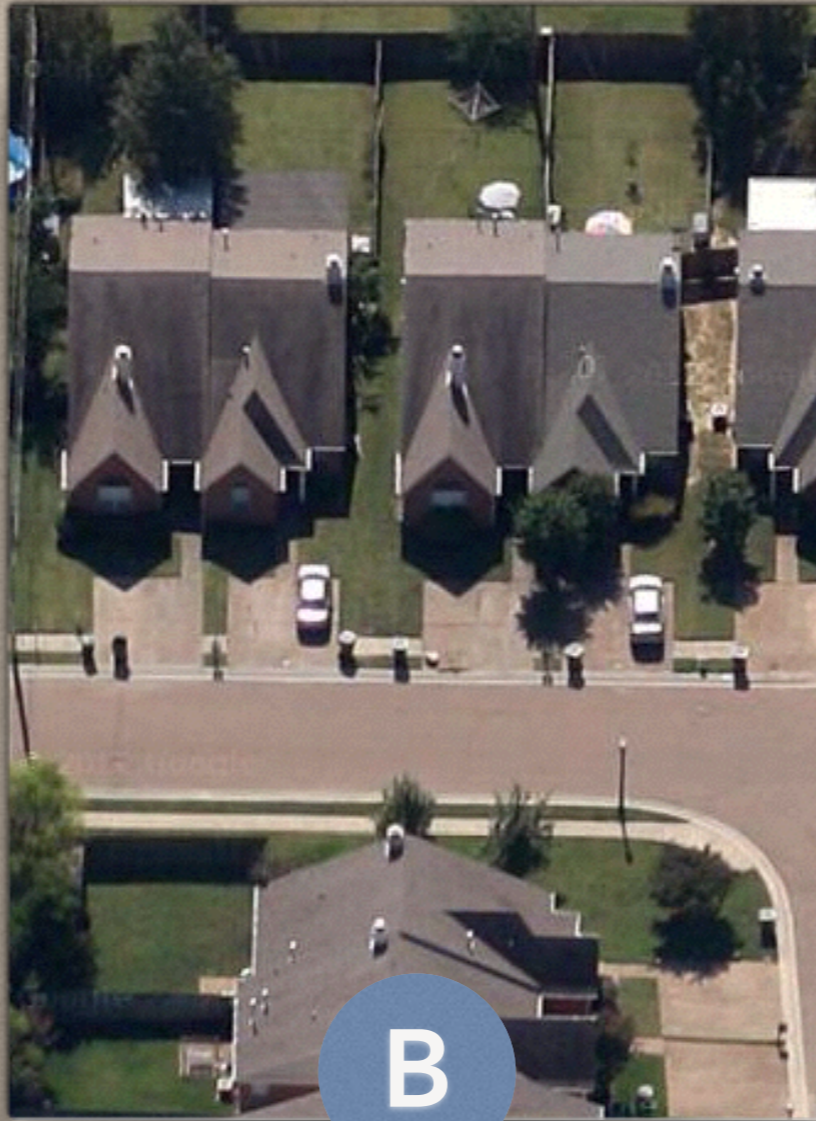
traditional houses with neat front lawns constructed since the 1950s, similar to those featured on *Ozzie and Harriet*, *Leave It to Beaver*, and *Father Knows Best*.

EXAMPLE ANSWERS



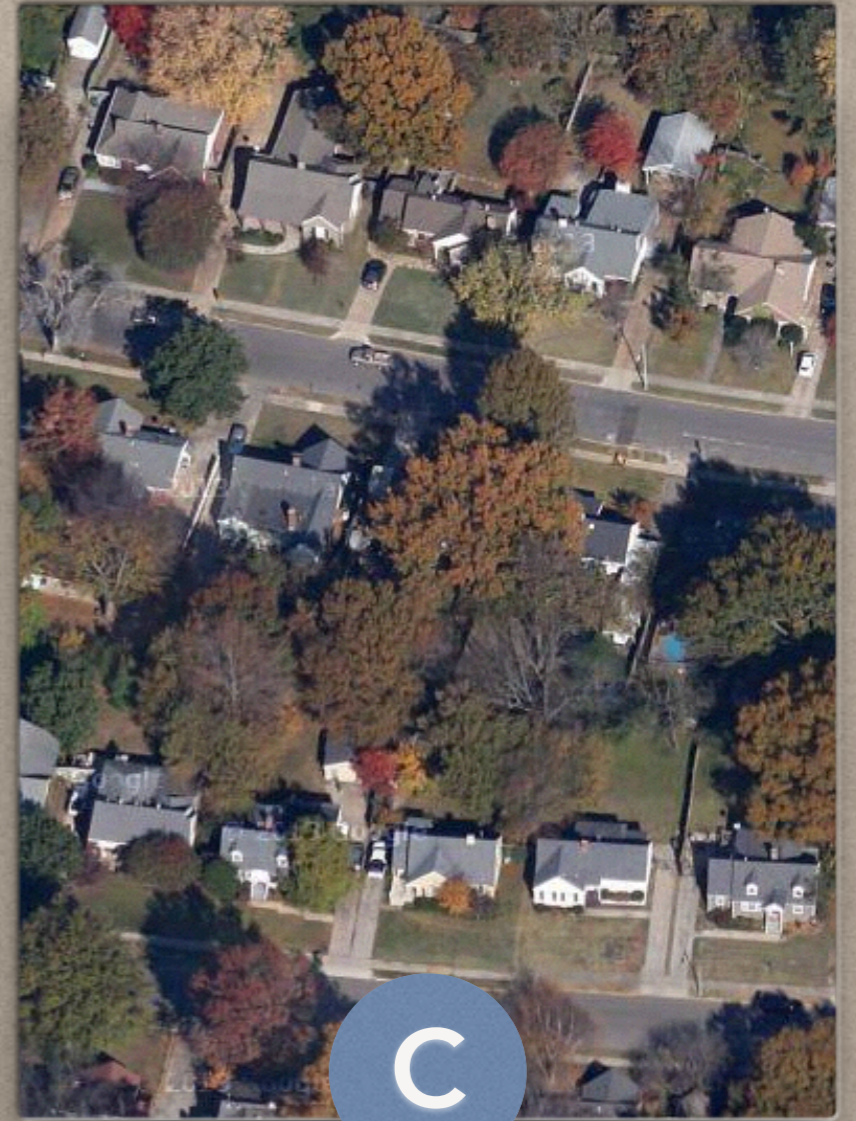
A

VALHALLA



B

**SNOUT
HOUSE**



C

**SITCOM
SUBURB**

**MATCH THE NAME WITH
THE CORRECT IMAGE**

***Match the term below with the correct images
on slides A-P.***

___ 1. Asphalt nation

___ 2. Ball pork

___ 3. Big box

___ 4. Boomburb

___ 5. Clustered world

___ 6. Edge nodes

___ 7. Greenfield

___ 8. Gridlock

___ 9. Leapfrog

___ 10. Litter on a stick

___ 11. Logo building

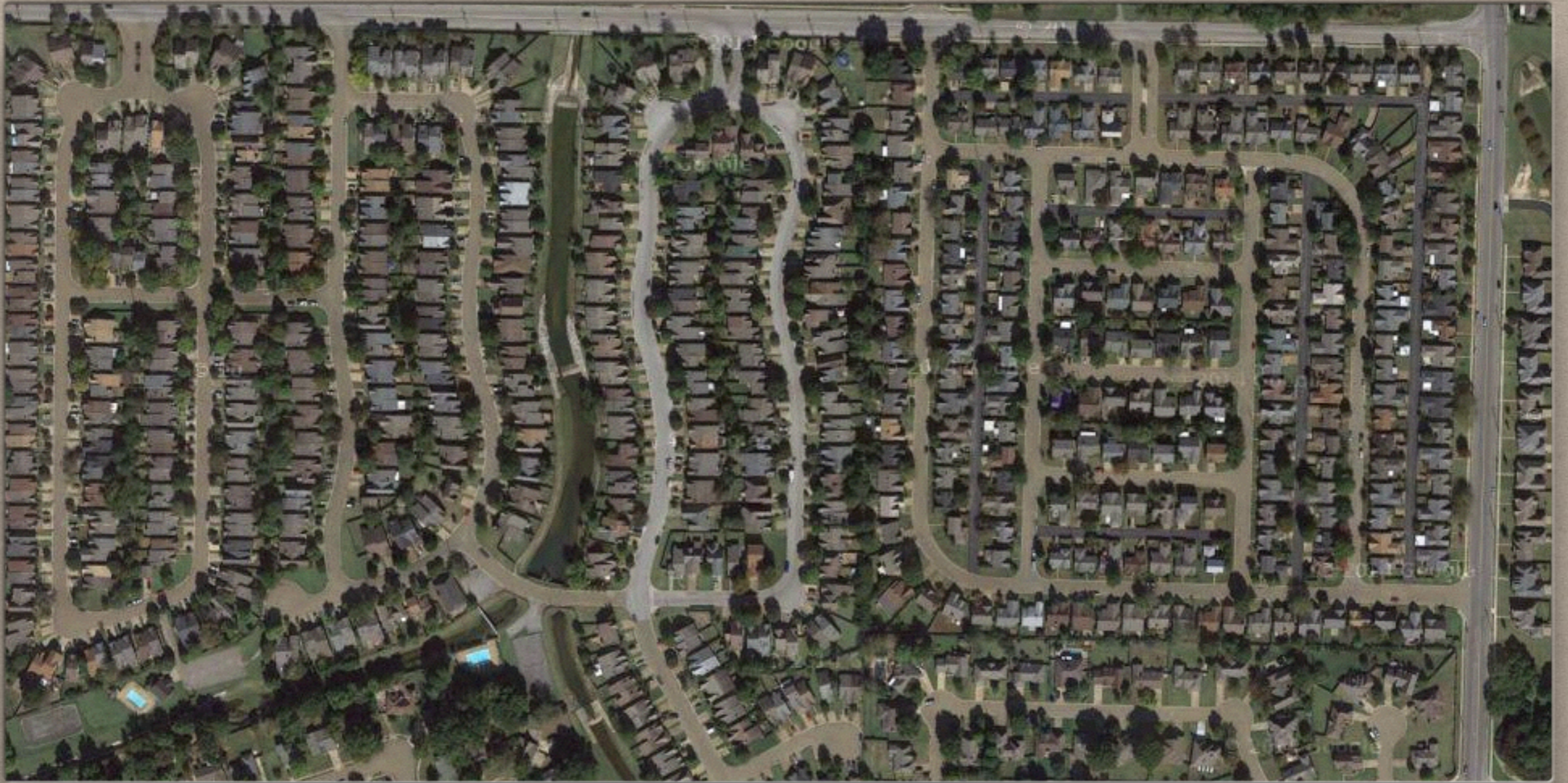
___ 12. LULU

___ 13. Mall glut

___ 14. Pork chop lot

___ 15. Privatopia

___ 16. Tract mansion



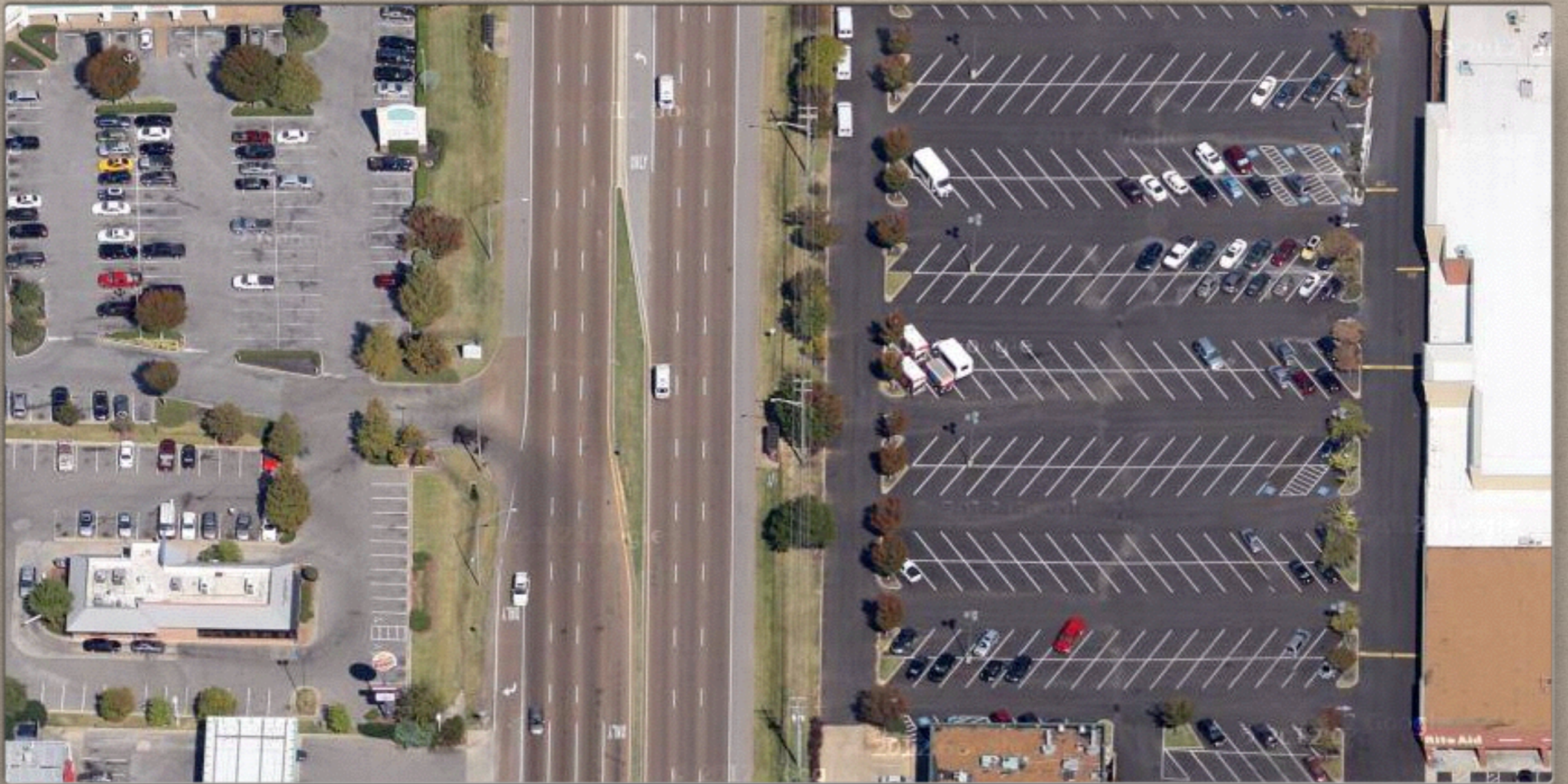
Asphalt nation - Ball park - Big Box - Boomburb - Clustered world
Edge nodes - Greenfield - Gridlock - Leapfrog - Litter on a stick
Logo building - LULU - Mall glut - Pork chop lot - Privatopia - Tract mansion





Asphalt nation - Ball park - Big Box - Boomburb - Clustered world
Edge nodes - Greenfield - Gridlock - Leapfrog - Litter on a stick
Logo building - LULU - Mall glut - Pork chop lot - Privatopia - Tract mansion

B



Asphalt nation - Ball park - Big Box - Boomburb - Clustered world
Edge nodes - Greenfield - Gridlock - Leapfrog - Litter on a stick
Logo building - LULU - Mall glut - Pork chop lot - Privatopia - Tract mansion





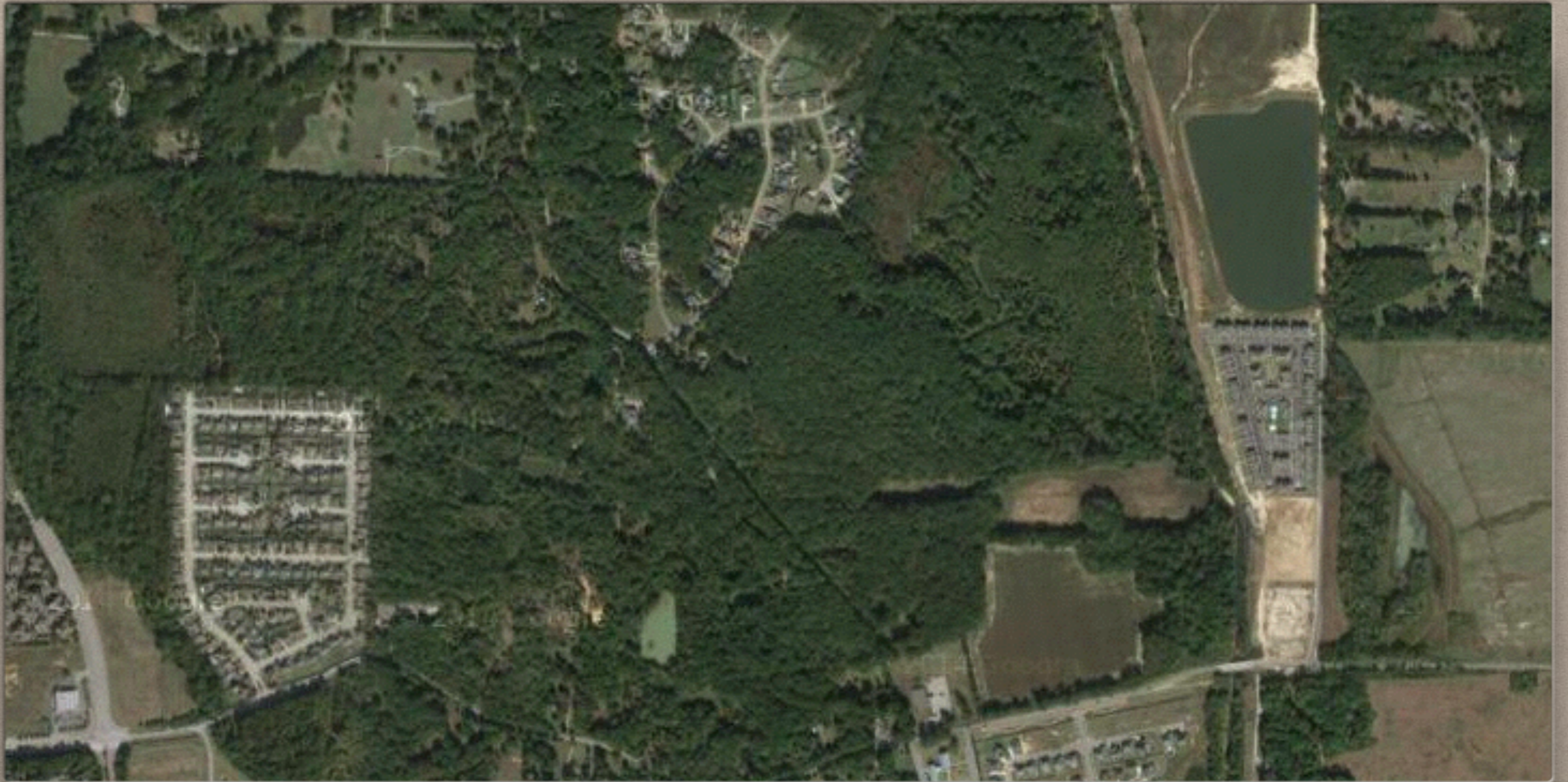
Asphalt nation - Ball park - Big Box - Boomburb - Clustered world
Edge nodes - Greenfield - Gridlock - Leapfrog - Litter on a stick
Logo building - LULU - Mall glut - Pork chop lot - Privatopia - Tract mansion

D



Asphalt nation - Ball park - Big Box - Boomburb - Clustered world
Edge nodes - Greenfield - Gridlock - Leapfrog - Litter on a stick
Logo building - LULU - Mall glut - Pork chop lot - Privatopia - Tract mansion

E



Asphalt nation - Ball park - Big Box - Boomburb - Clustered world
Edge nodes - Greenfield - Gridlock - Leapfrog - Litter on a stick
Logo building - LULU - Mall glut - Pork chop lot - Privatopia - Tract mansion

F



Asphalt nation - Ball park - Big Box - Boomburb - Clustered world
Edge nodes - Greenfield - Gridlock - Leapfrog - Litter on a stick
Logo building - LULU - Mall glut - Pork chop lot - Privatopia - Tract mansion





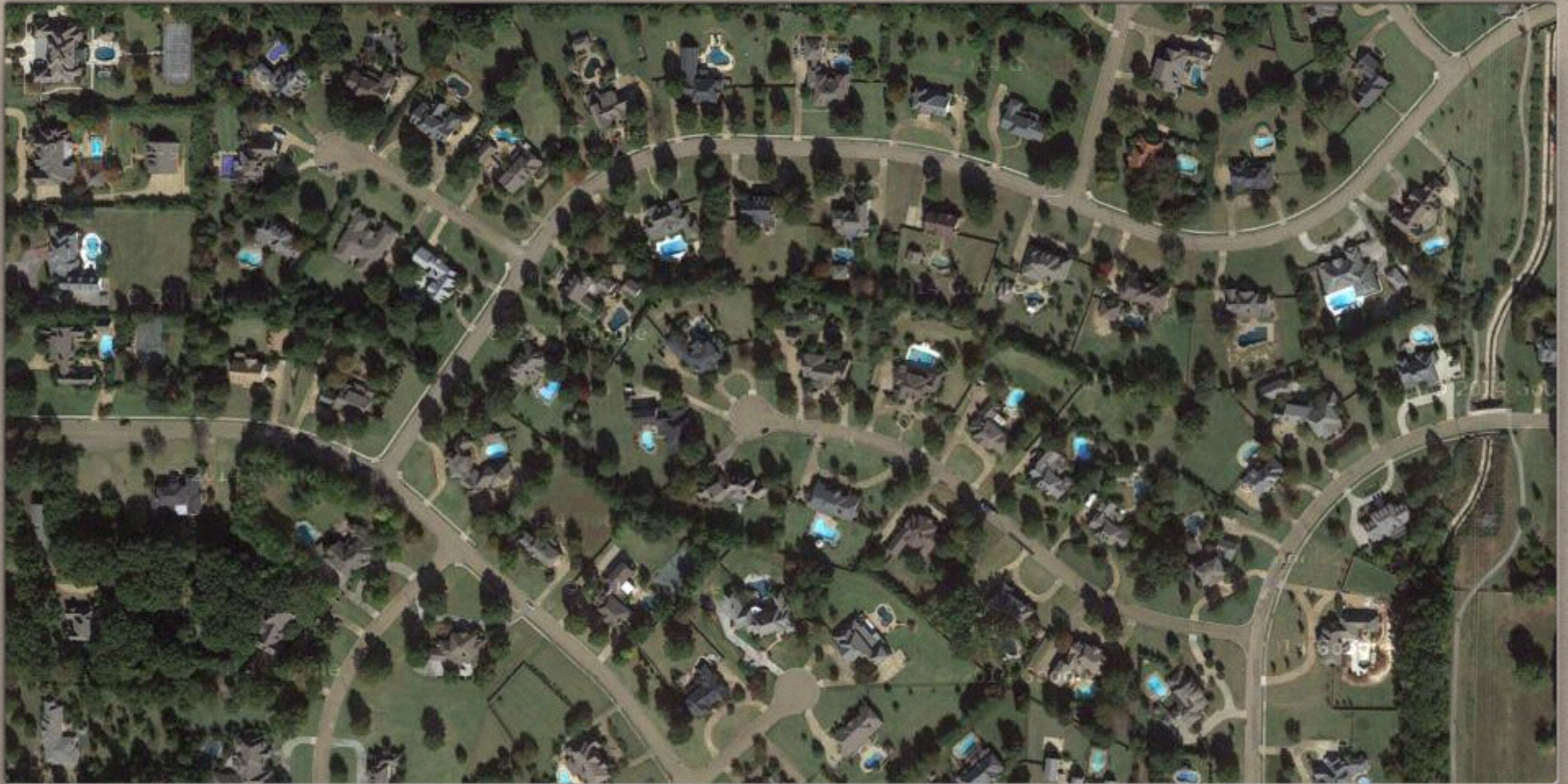
Asphalt nation - Ball park - Big Box - Boomburb - Clustered world
Edge nodes - Greenfield - Gridlock - Leapfrog - Litter on a stick
Logo building - LULU - Mall glut - Pork chop lot - Privatopia - Tract mansion

H



Asphalt nation - Ball park - Big Box - Boomburb - Clustered world
Edge nodes - Greenfield - Gridlock - Leapfrog - Litter on a stick
Logo building - LULU - Mall glut - Pork chop lot - Privatopia - Tract mansion





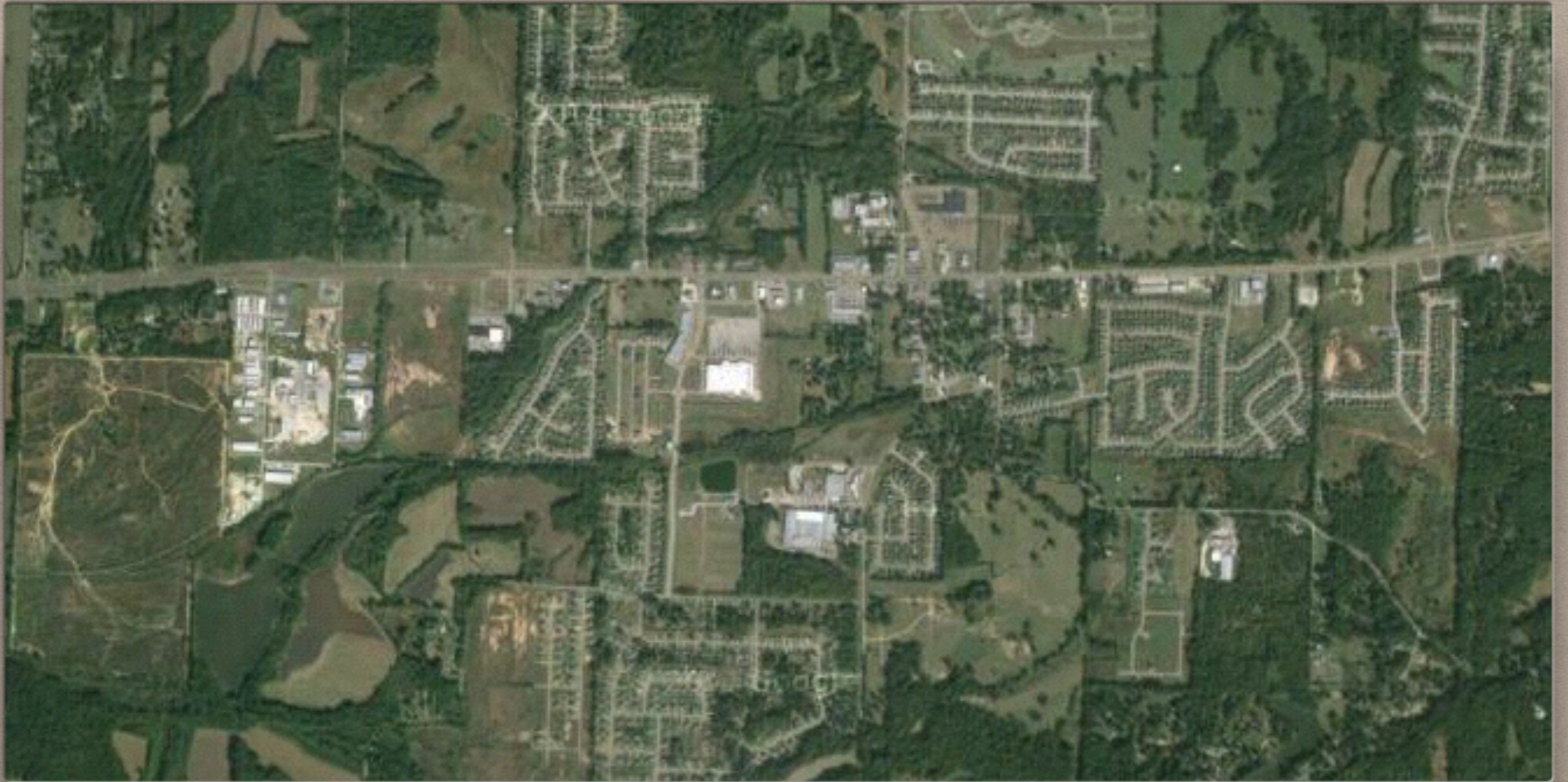
Asphalt nation - Ball park - Big Box - Boomburb - Clustered world
Edge nodes - Greenfield - Gridlock - Leapfrog - Litter on a stick
Logo building - LULU - Mall glut - Pork chop lot - Privatopia - Tract mansion

J



Asphalt nation - Ball park - Big Box - Boomburb - Clustered world
Edge nodes - Greenfield - Gridlock - Leapfrog - Litter on a stick
Logo building - LULU - Mall glut - Pork chop lot - Privatopia - Tract mansion

K



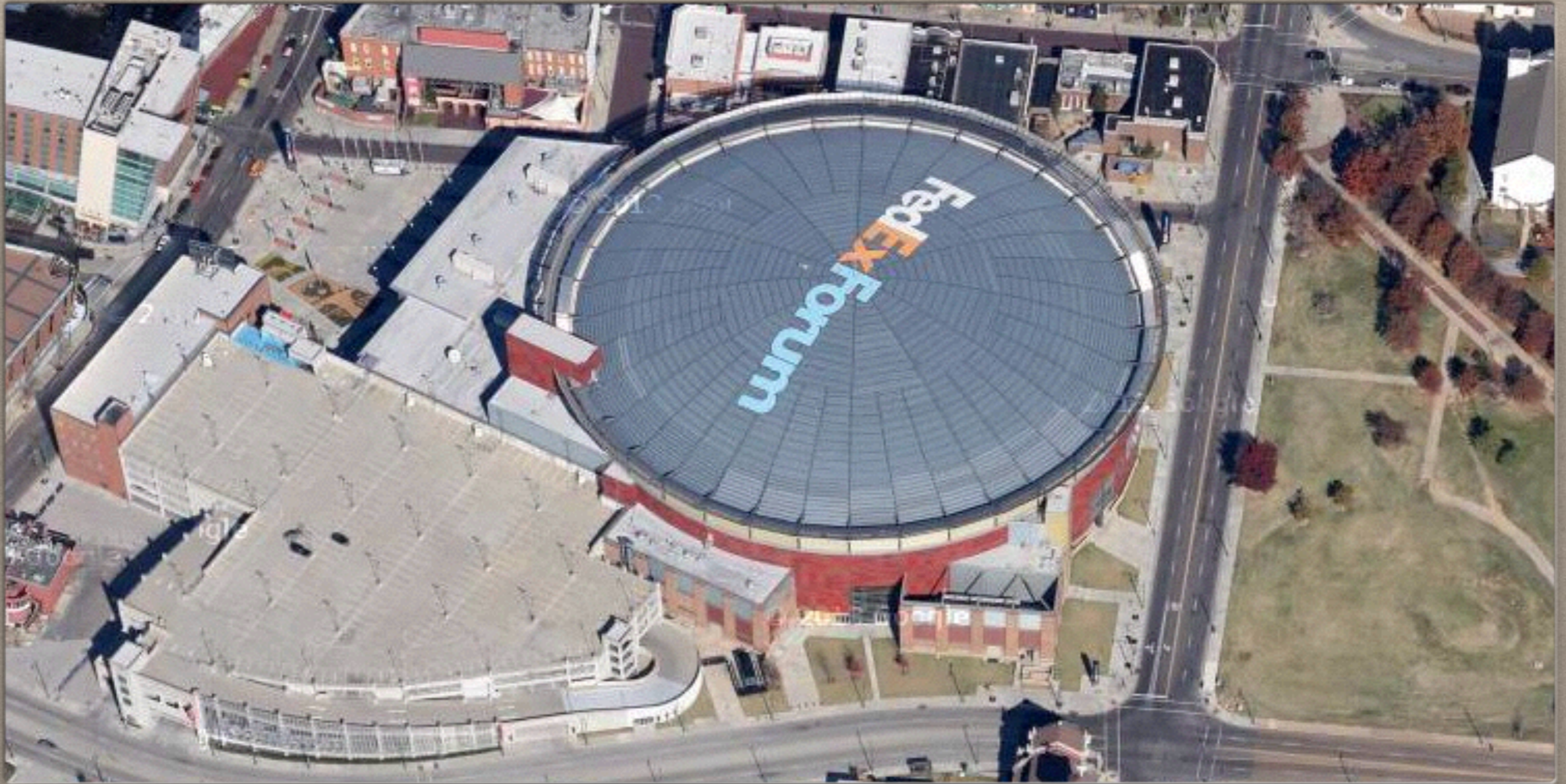
Asphalt nation - Ball park - Big Box - Boomburb - Clustered world
Edge nodes - Greenfield - Gridlock - Leapfrog - Litter on a stick
Logo building - LULU - Mall glut - Pork chop lot - Privatopia - Tract mansion





Asphalt nation - Ball park - Big Box - Boomburb - Clustered world
Edge nodes - Greenfield - Gridlock - Leapfrog - Litter on a stick
Logo building - LULU - Mall glut - Pork chop lot - Privatopia - Tract mansion

M



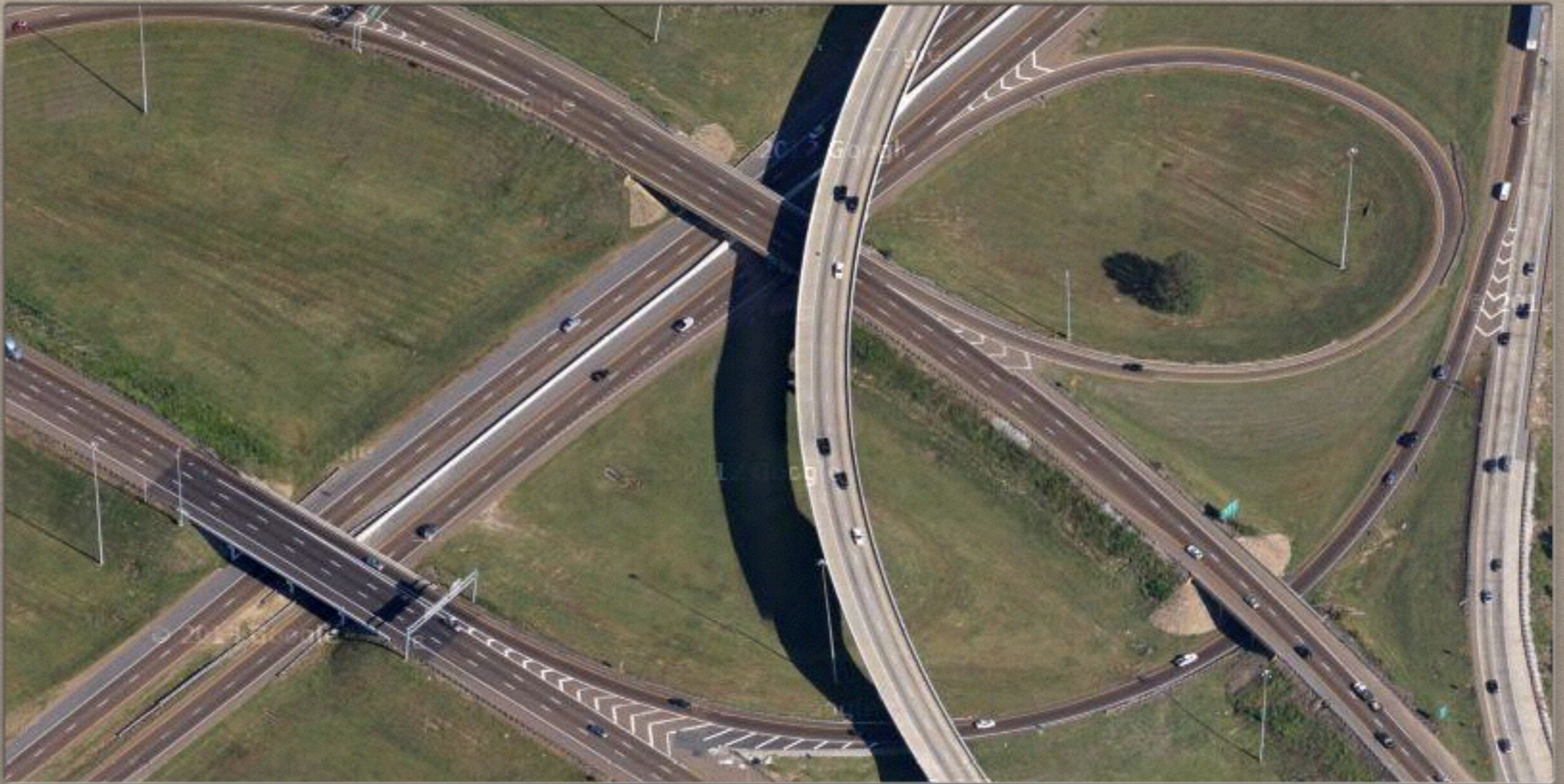
Asphalt nation - Ball park - Big Box - Boomburb - Clustered world
Edge nodes - Greenfield - Gridlock - Leapfrog - Litter on a stick
Logo building - LULU - Mall glut - Pork chop lot - Privatopia - Tract mansion





Asphalt nation - Ball park - Big Box - Boomburb - Clustered world
Edge nodes - Greenfield - Gridlock - Leapfrog - Litter on a stick
Logo building - LULU - Mall glut - Pork chop lot - Privatopia - Tract mansion





Asphalt nation - Ball park - Big Box - Boomburb - Clustered world
Edge nodes - Greenfield - Gridlock - Leapfrog - Litter on a stick
Logo building - LULU - Mall glut - Pork chop lot - Privatopia - Tract mansion

P

Before checking answers use the descriptions / definitions on the next slide to help with deterring the best match between the term and the photos marked A-P.

DESCRIPTIONS / DEFINITIONS

THE DESCRIPTIONS / DEFINITIONS A-P MATCH WITH THE CORRESPONDING SLIDES A-P.

- A. a rapidly growing, urban-sized place in the suburbs; places with more than 100,000 residents that are not the largest cities in their respective metropolitan area.
- B. slang term for billboards.
- C. the paved-over United States; car culture.
- D. nickname for an interior lot requiring a long driveway to reach the main part of the property.
- E. a project constructed on raw land, usually agricultural land.
- F. development that skips over empty land; sometimes this occurs to avoid local land use regulation.
- G. gigantic, windowless structure, usually of cheap, concrete block construction, typically sited next to an arterial or near a freeway interchange with high traffic volume; favored by retail chains and discount buyers.
- H. a large, expensive house constructed among homes that are very similar by a subdivider who builds on speculation.
- I. term referring to the 40,000 shopping centers holding 19 square feet of retail space per citizen, twice that of any other country.
- J. a system to divide Americans into marketing clusters that take their names from residential stereotypes, e.g., "Pools and Patios" or "Kids and Cul-de-Sacs.
- K. buildings designed as a trademark so that drivers can spot them from a distance.
- L. growth areas of commercial real estate; also referred to as edge or edgeless cities.
- M. a community-of-interest development where residents are legally bound to obey the covenants, conditions, and restrictions of a homeowner association.
- N. a stadium built with public funds for the use of a privately owned ball team.
- O. locally unwanted land use that creates a problem for people because of the way it looks, smells, sounds, or pollutes the environment.
- P. results from extended commutes when housing and workplaces are far apart, as well as from single-use zoning that forces people to drive long distances between housing, workplaces, and basic neighborhood services; contributes to air pollution.

**ENLARGED
DESCRIPTIONS / DEFINITIONS**

- A. a rapidly growing, urban-sized place in the suburbs; places with more than 100,000 residents that are not the largest cities in their respective metropolitan area.
- B. slang term for billboards.
- C. the paved-over United States; car culture.
- D. nickname for an interior lot requiring a long driveway to reach the main part of the property.
- E. a project constructed on raw land, usually agricultural land.
- F. development that skips over empty land; sometimes this occurs to avoid local land use regulation.
- G. gigantic, windowless structure, usually of cheap, concrete block construction, typically sited next to an arterial or near a freeway interchange with high traffic volume; favored by retail chains and discount buyers.

H. a large, expensive house constructed among homes that are very similar by a subdivider who builds on speculation.

I. term referring to the 40,000 shopping centers holding 19 square feet of retail space per citizen, twice that of any other country.

J. a system to divide Americans into marketing clusters that take their names from residential stereotypes, e.g., “Pools and Patios” or “Kids and Cul-de-Sacs.

K. buildings designed as a trademark so that drivers can spot them from a distance.

L. growth areas of commercial real estate; also referred to as edge or edgeless cities.

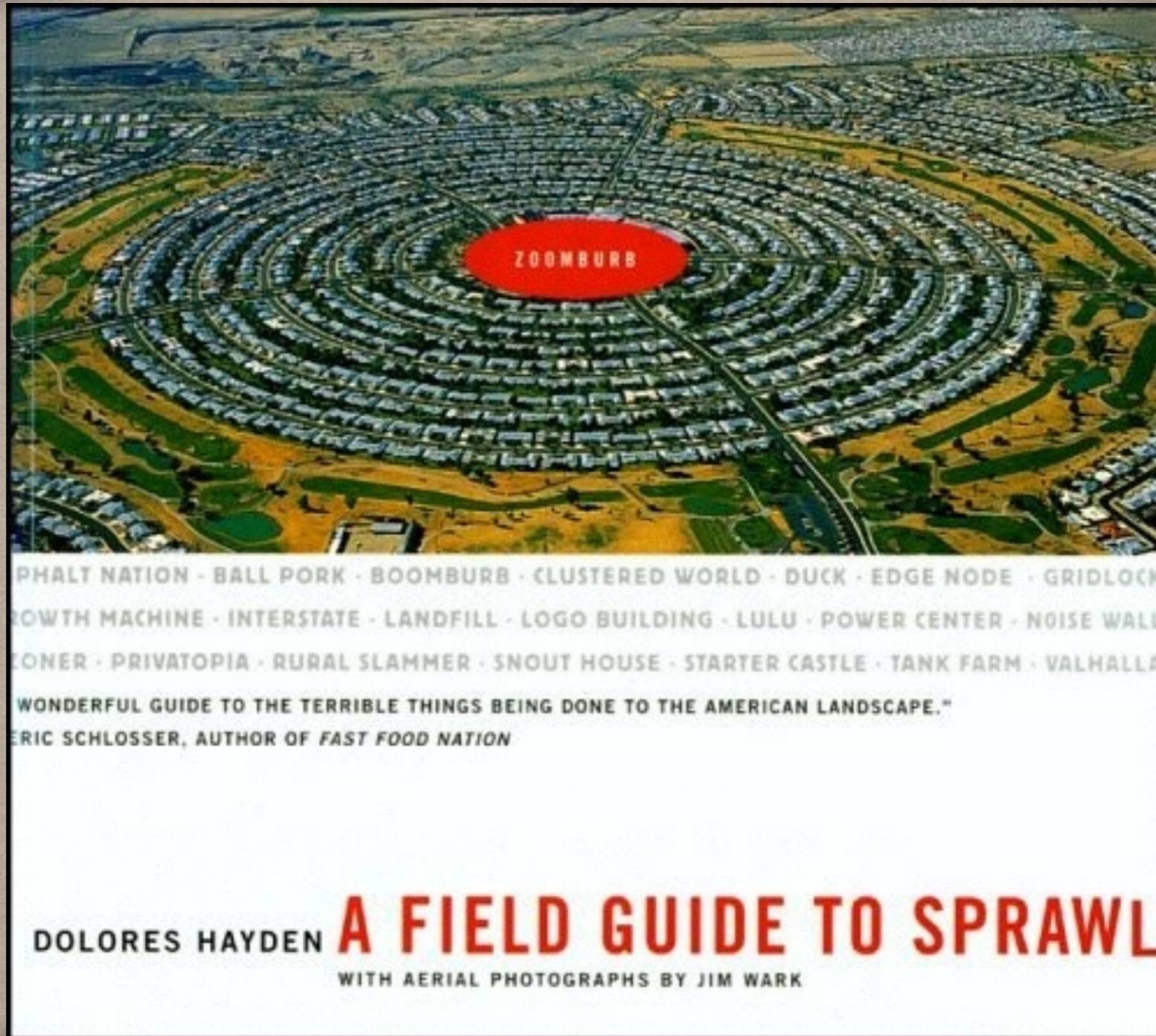
M. a community-of-interest development where residents are legally bound to obey the covenants, conditions, and restrictions of a homeowner association.

N. a stadium built with public funds for the use of a privately owned ball team.

O. locally unwanted land use that creates a problem for people because of the way it looks, smells, sounds, or pollutes the environment.

P. results from extended commutes when housing and workplaces are far apart, as well as from single-use zoning that forces people to drive long distances between housing, workplaces, and basic neighborhood services; contributes to air pollution.

ANSWERS



PHALT NATION · BALL PORK · BOOMBURB · CLUSTERED WORLD · DUCK · EDGE NODE · GRIDLOCK · GROWTH MACHINE · INTERSTATE · LANDFILL · LOGO BUILDING · LULU · POWER CENTER · NOISE WALL · CONER · PRIVATOPIA · RURAL SLAMMER · SNOUT HOUSE · STARTER CASTLE · TANK FARM · VALHALLA

WONDERFUL GUIDE TO THE TERRIBLE THINGS BEING DONE TO THE AMERICAN LANDSCAPE."
ERIC SCHLOSSER, AUTHOR OF *FAST FOOD NATION*

DOLORES HAYDEN **A FIELD GUIDE TO SPRAWL**
WITH AERIAL PHOTOGRAPHS BY JIM WARK

***Match the term below with the correct images
on slides A-P.***

___ 1. Asphalt nation

___ 2. Ball pork

___ 3. Big box

___ 4. Boomburb

___ 5. Clustered world

___ 6. Edge nodes

___ 7. Greenfield

___ 8. Gridlock

___ 9. Leapfrog

___ 10. Litter on a stick

___ 11. Logo building

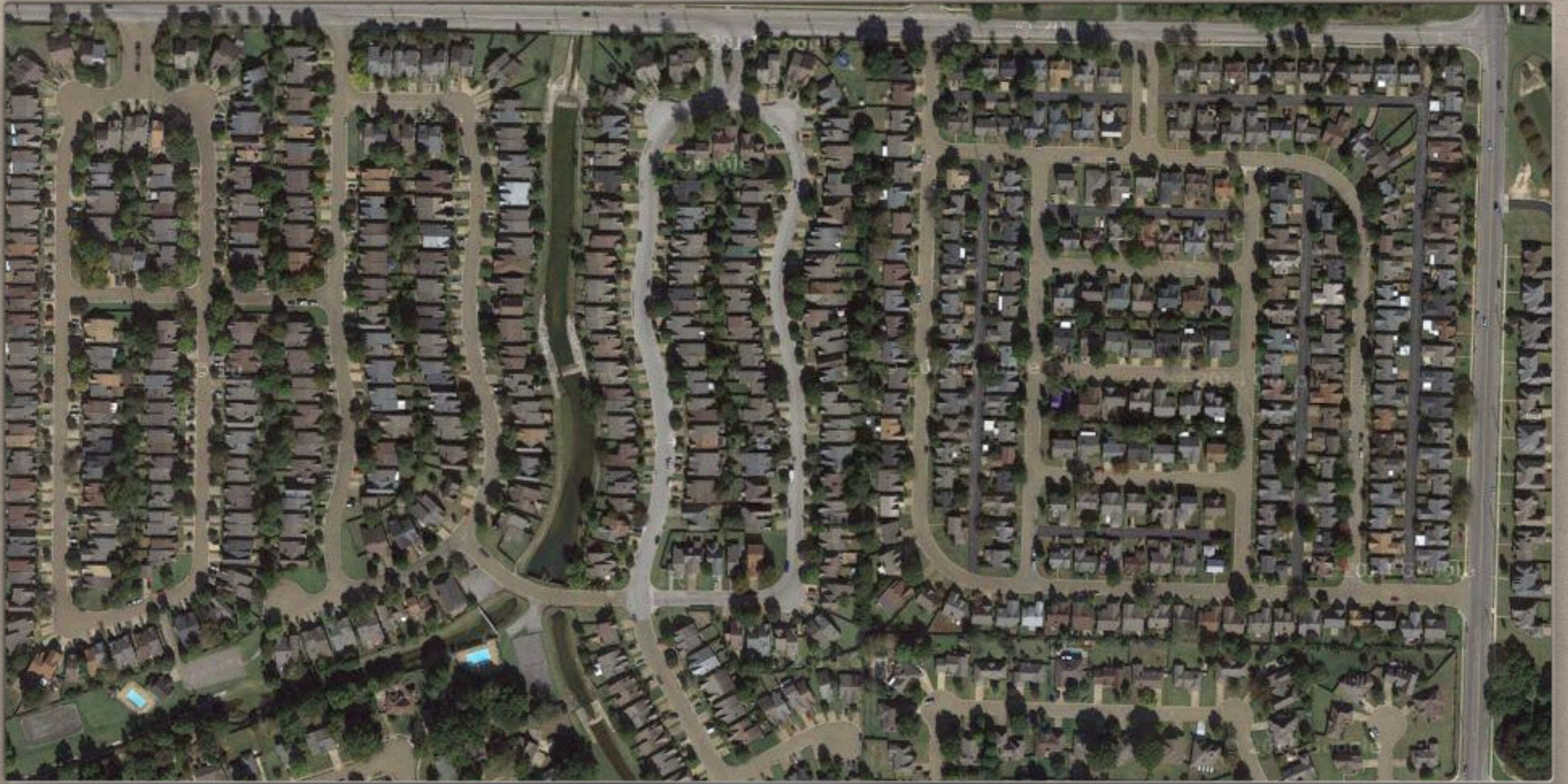
___ 12. LULU

___ 13. Mall glut

___ 14. Pork chop lot

___ 15. Privatopia

___ 16. Tract mansion



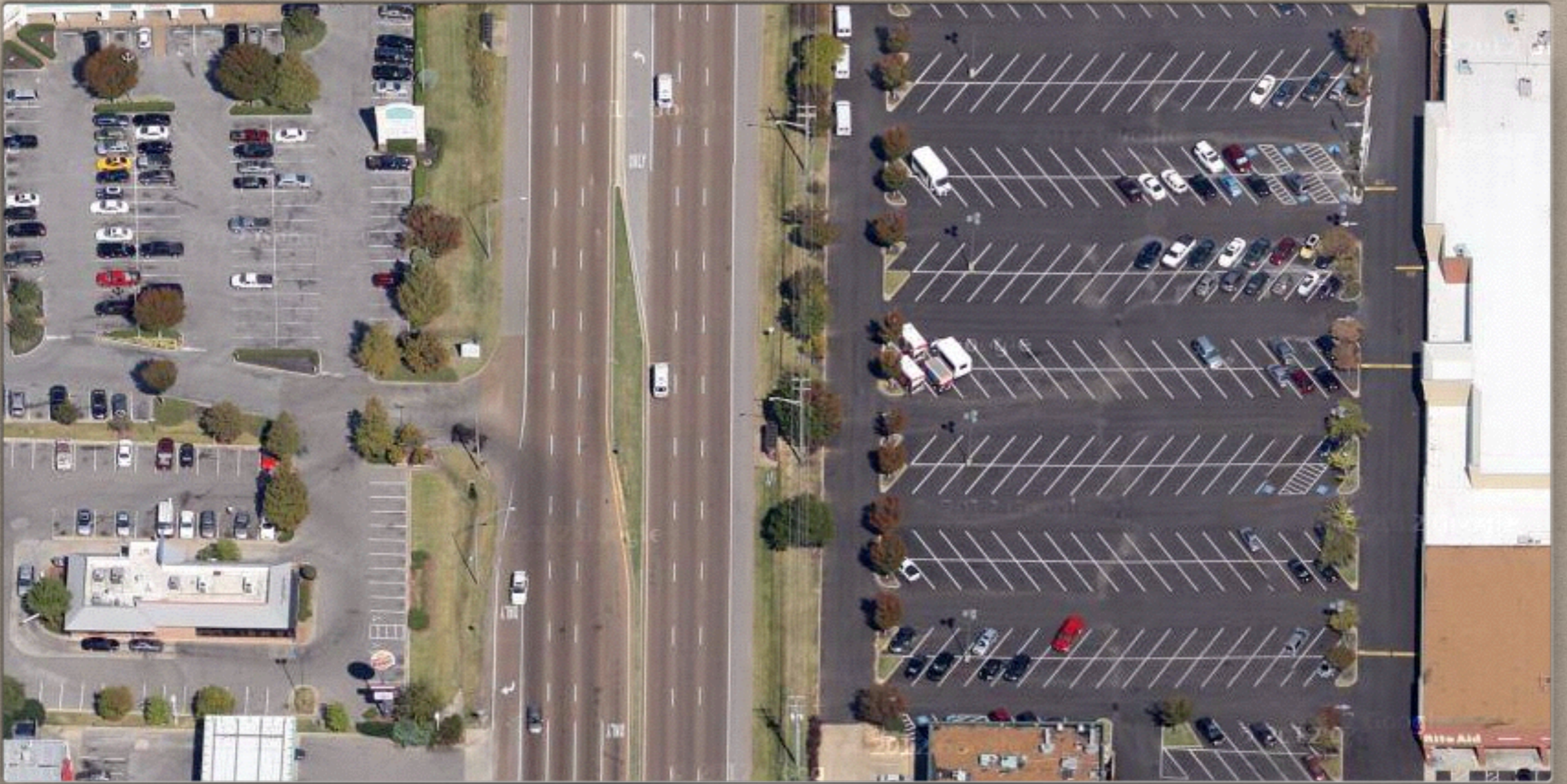
BOOMBURB





LITTER ON A STICK

B



ASPHALT NATION





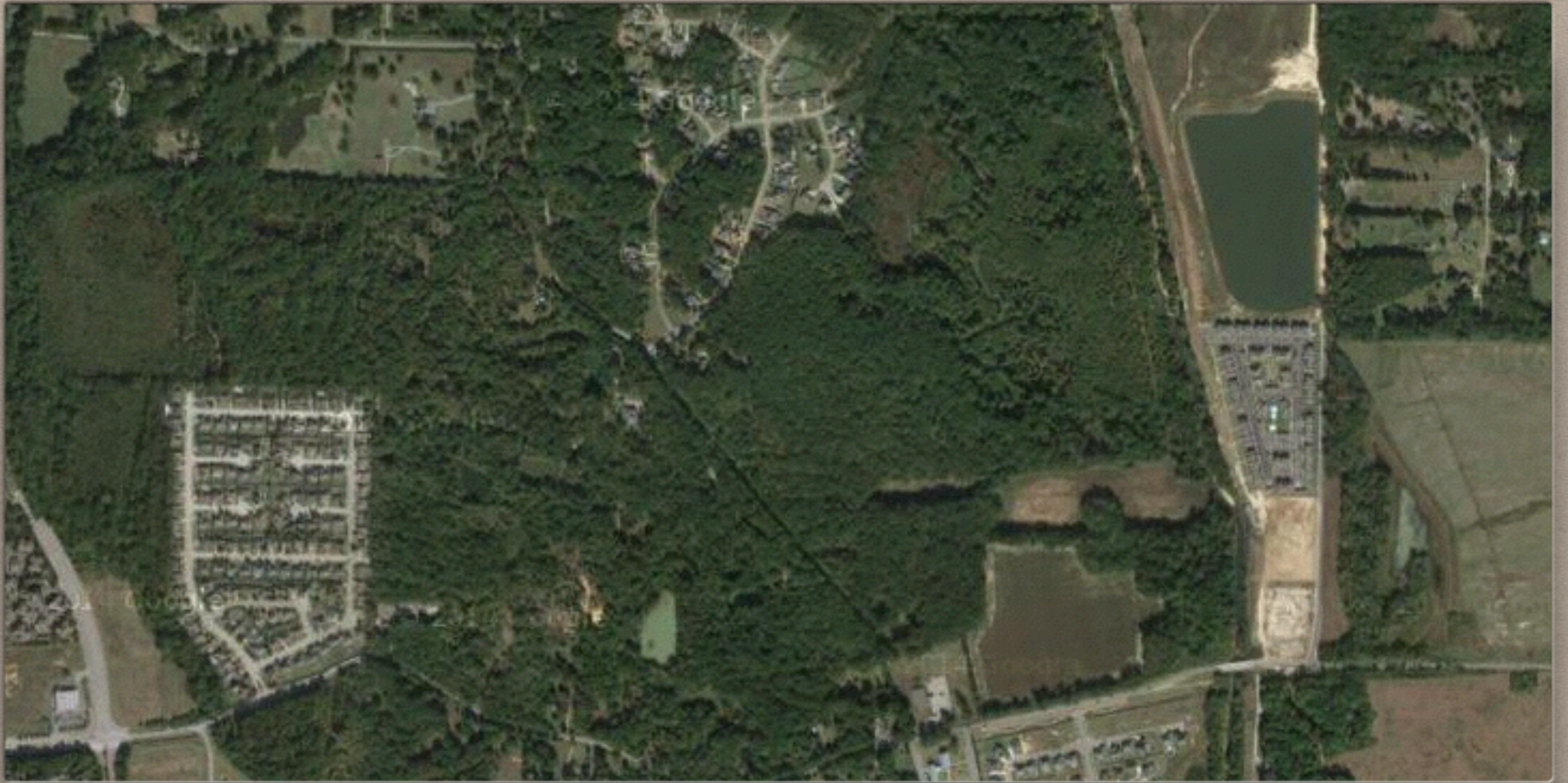
PORK CHOP LOT

D



GREENFIELD

E



LEAPFROG

F



BIG BOX





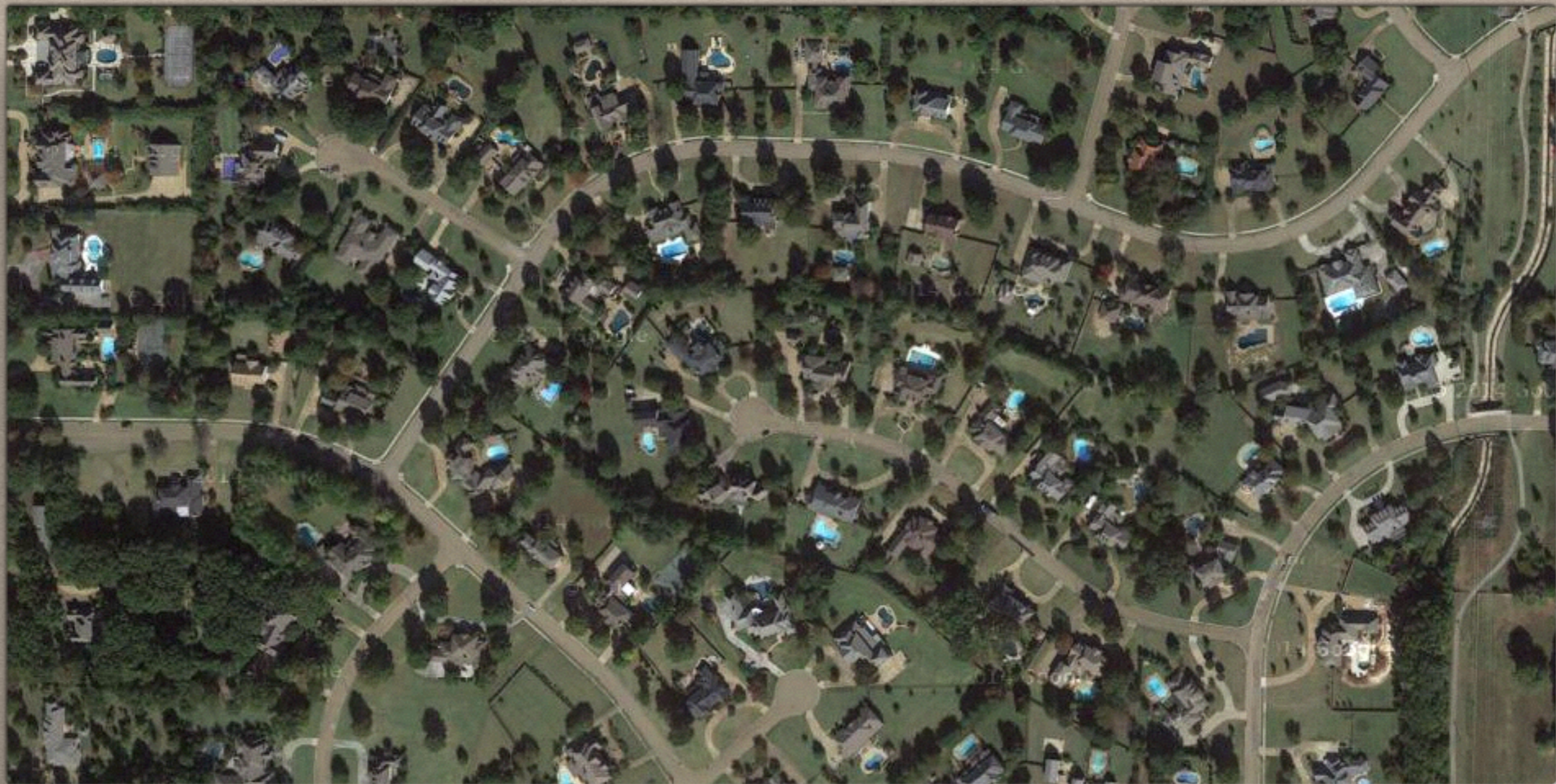
TRACT MANSION

H



MALL GLUT





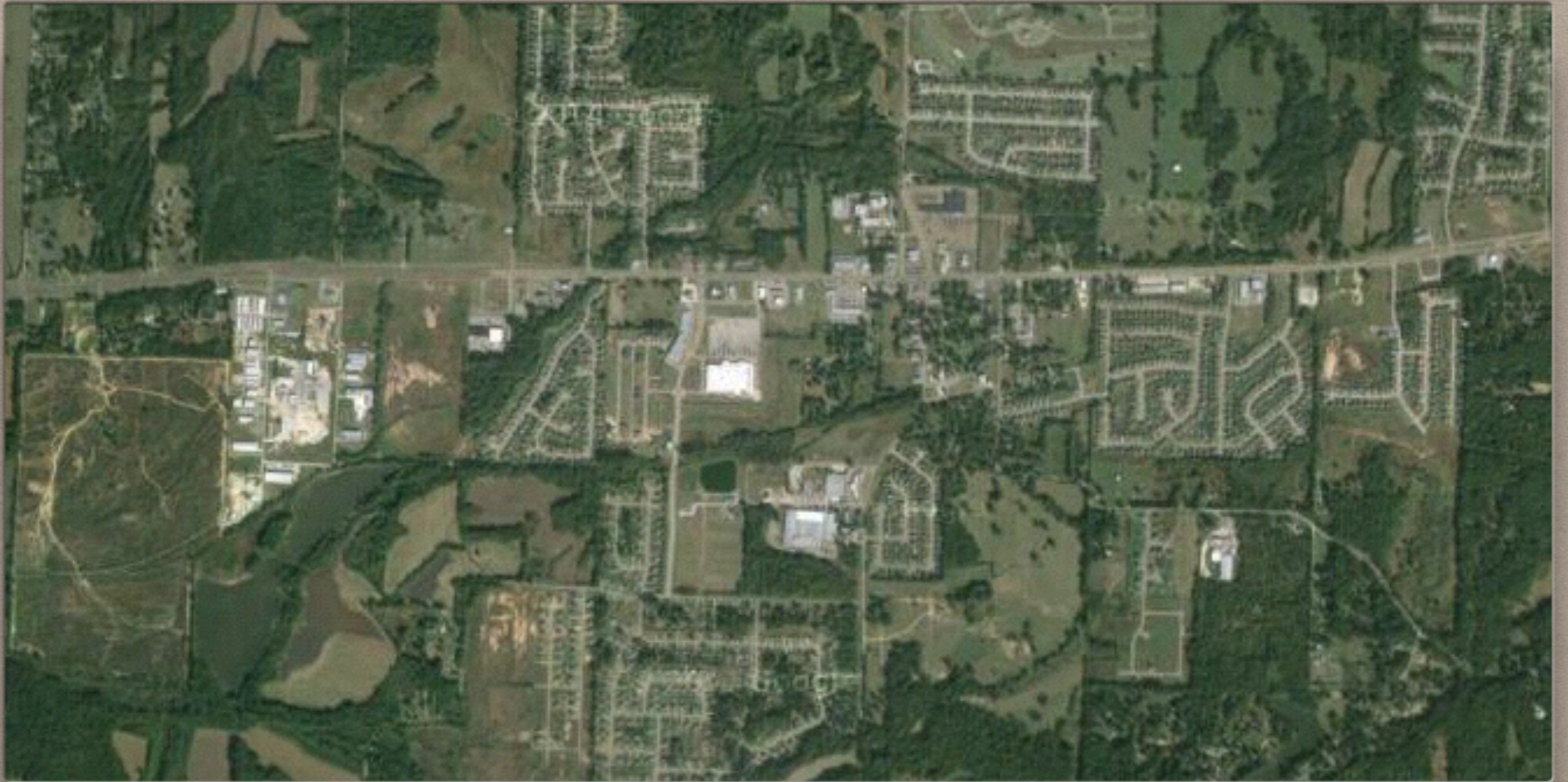
CLUSTERED WORLD

J



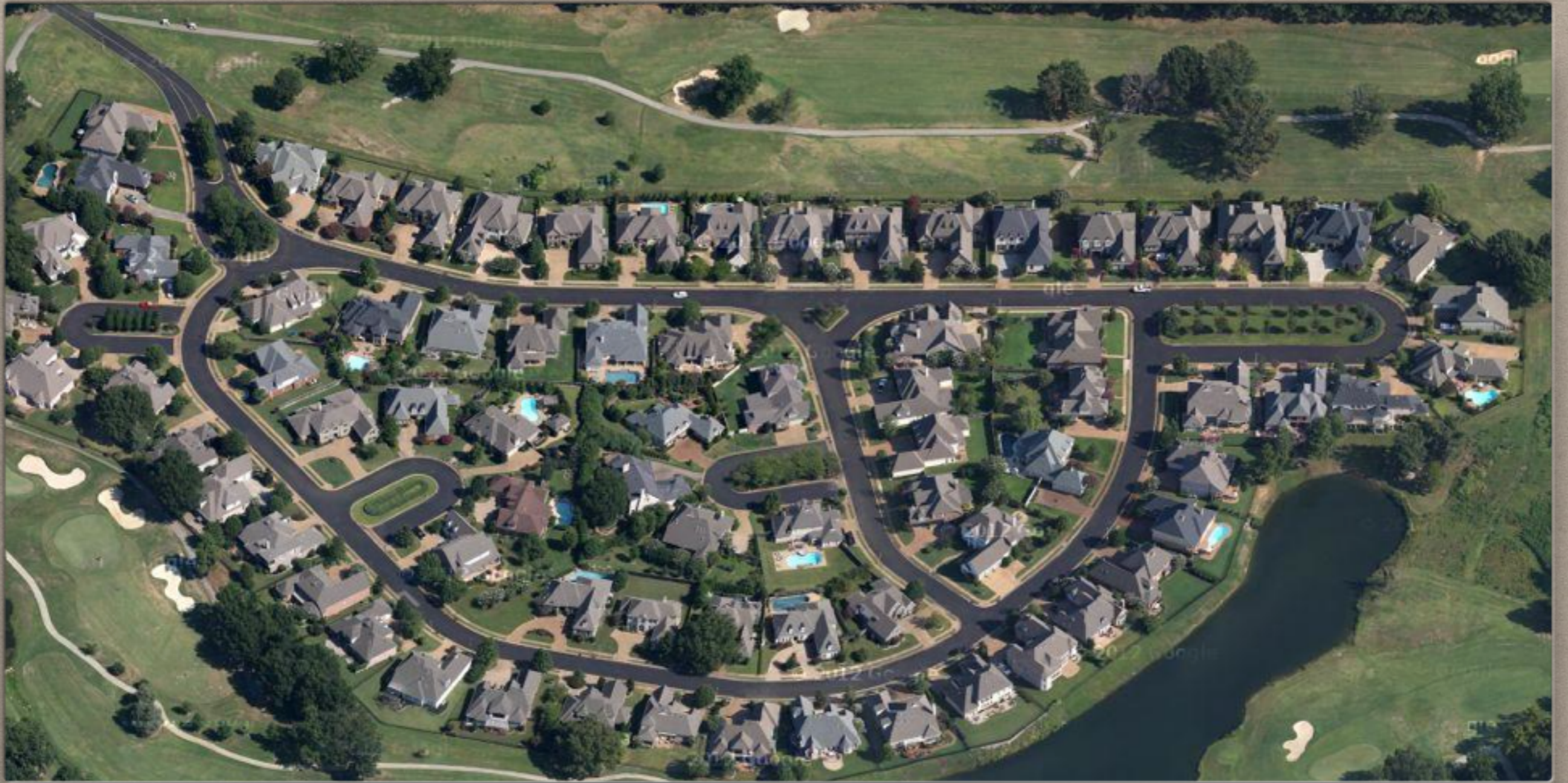
LOGO BUILDING

K



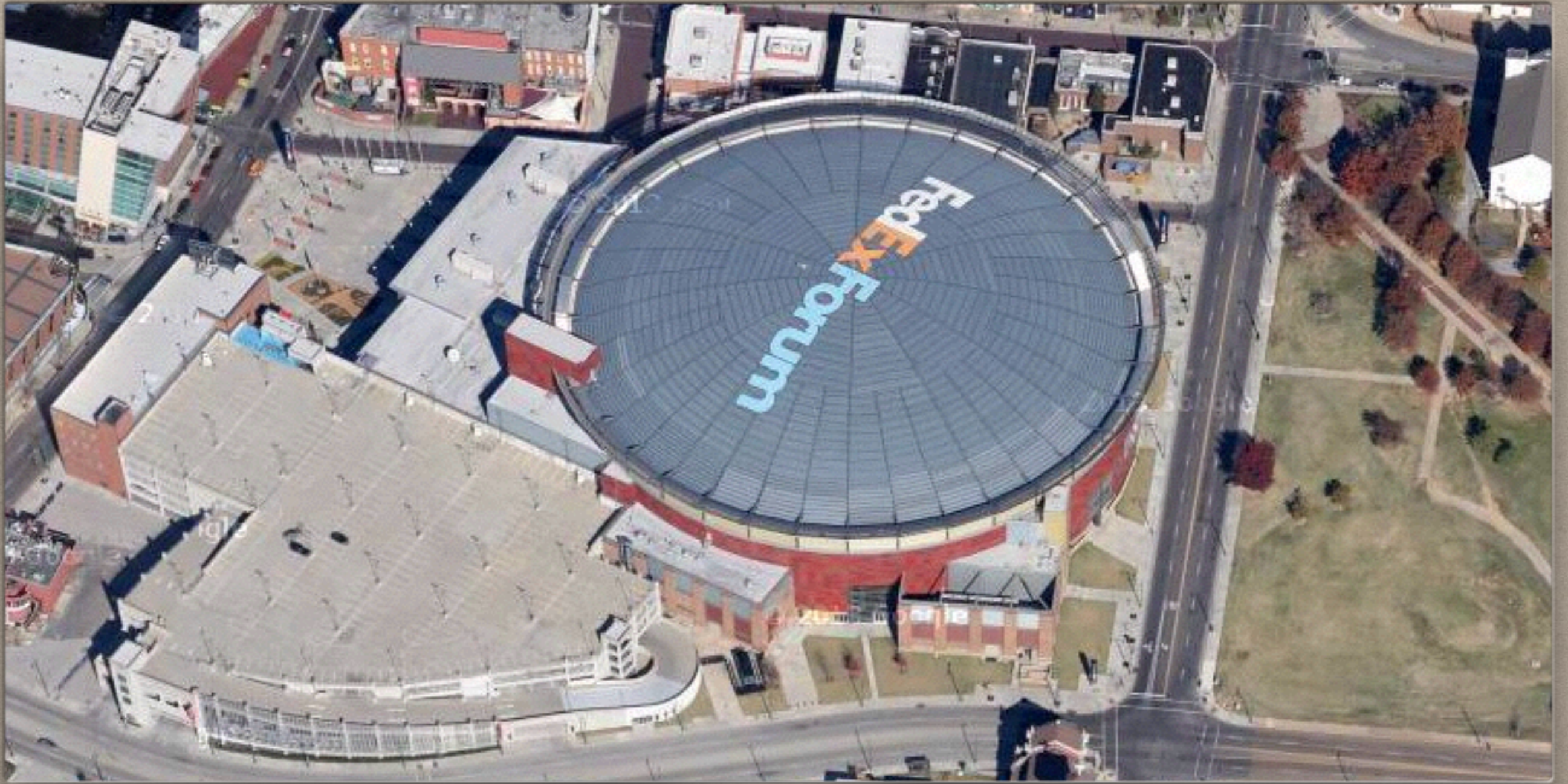
EDGE NODES





PRIVATOPIA

M



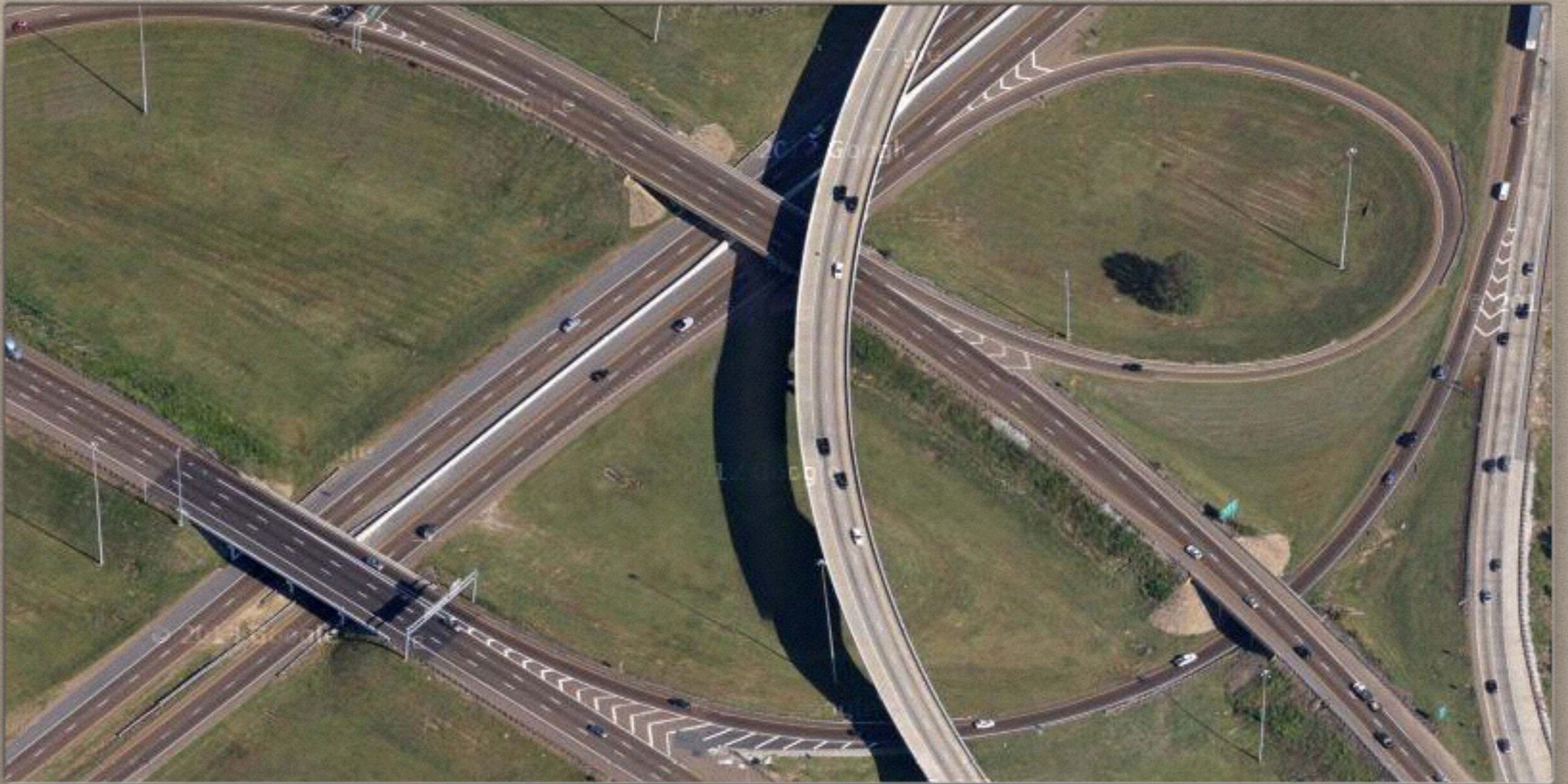
BALL PORK





LULU





GRIDLOCK

P

ANSWERS

Match the term below with the correct letter A-P

C 1. Asphalt nation

N 2. Ball pork

G 3. Big box

A 4. Boomburb

J 5. Clustered world

L 6. Edge nodes

E 7. Greenfield

P 8. Gridlock

F 9. Leapfrog

B 10. Litter on a stick

K 11. Logo building

O 12. LULU

I 13. Mall glut

D 14. Pork chop lot

M 15. Privatopia

H 16. Tract mansion

Student Assignment

- Select a suburban area close to where you live.
- Using Google Maps find and print out **FIVE** examples from your selected suburban area that match up with five different terms defined in the lesson.
- **For each of your five examples:**
 - Write out the term it is illustrating.
 - Describe the area in 2-3 sentences.