

1- Auburn Leaf Dr

Collierville, TN 38017

2- 9358 Williams Glen Cv

Germantown, TN 38139

3- 8030 Winchester Rd

Memphis, TN 38125

4- 8562 Austin Peay Hwy

Millington, TN 38053

5- 855 Union Ave

Memphis, TN 38103

6- 2567 Oxford Ave

Memphis, TN 38112

7- 1531 Peabody Ave

Memphis, TN 38104

8- 5676 Stage Rd

Memphis, TN 38134

9- 57 N Somerville St

Memphis, TN 38104

10- 3611 Mill Branch Park Dr

Memphis, TN 38116

11- 148 St Paul Ave

Memphis, TN 38103

12- 1139 S Shady Grove Rd

Memphis, TN 38119

13- 113 N Main St

Memphis, TN 38103

14- 1664 Castex St

Memphis, TN 38109

15- 896 Getwell Rd

U of M, Memphis, TN 38111

16- 3849 New Getwell Rd

Memphis, TN 38118

17- 6818 Sprucehill Dr

Memphis, TN 38135

18- 4685 Shadow Fork Cove

Arlington, TN 38002

1- Auburn Leaf Dr
Collierville, TN 38017

2- 9358 Williams Glen Cv
Germantown, TN 38139

3- 8030 Winchester Rd
Memphis, TN 38125

4- 8562 Austin Peay Hwy
Millington, TN 38053

5- 855 Union Ave
Memphis, TN 38103

6- 2567 Oxford Ave
Memphis, TN 38112

7- 1531 Peabody Ave
Memphis, TN 38104

8- 5676 Stage Rd
Memphis, TN 38134

9- 57 N Somerville St
Memphis, TN 38104

10- 3611 Mill Branch Park Dr
Memphis, TN 38116

11- 148 St Paul Ave
Memphis, TN 38103

12- 1139 S Shady Grove Rd
Memphis, TN 38119

13- 113 N Main St
Memphis, TN 38103

14- 1664 Castex St
Memphis, TN 38109

15- 896 Getwell Rd
U of M, Memphis, TN 38111

16- 3849 New Getwell Rd
Memphis, TN 38118

17- 6818 Sprucehill Dr
Memphis, TN 38135

18- 4685 Shadow Fork Cove
Arlington, TN 38002

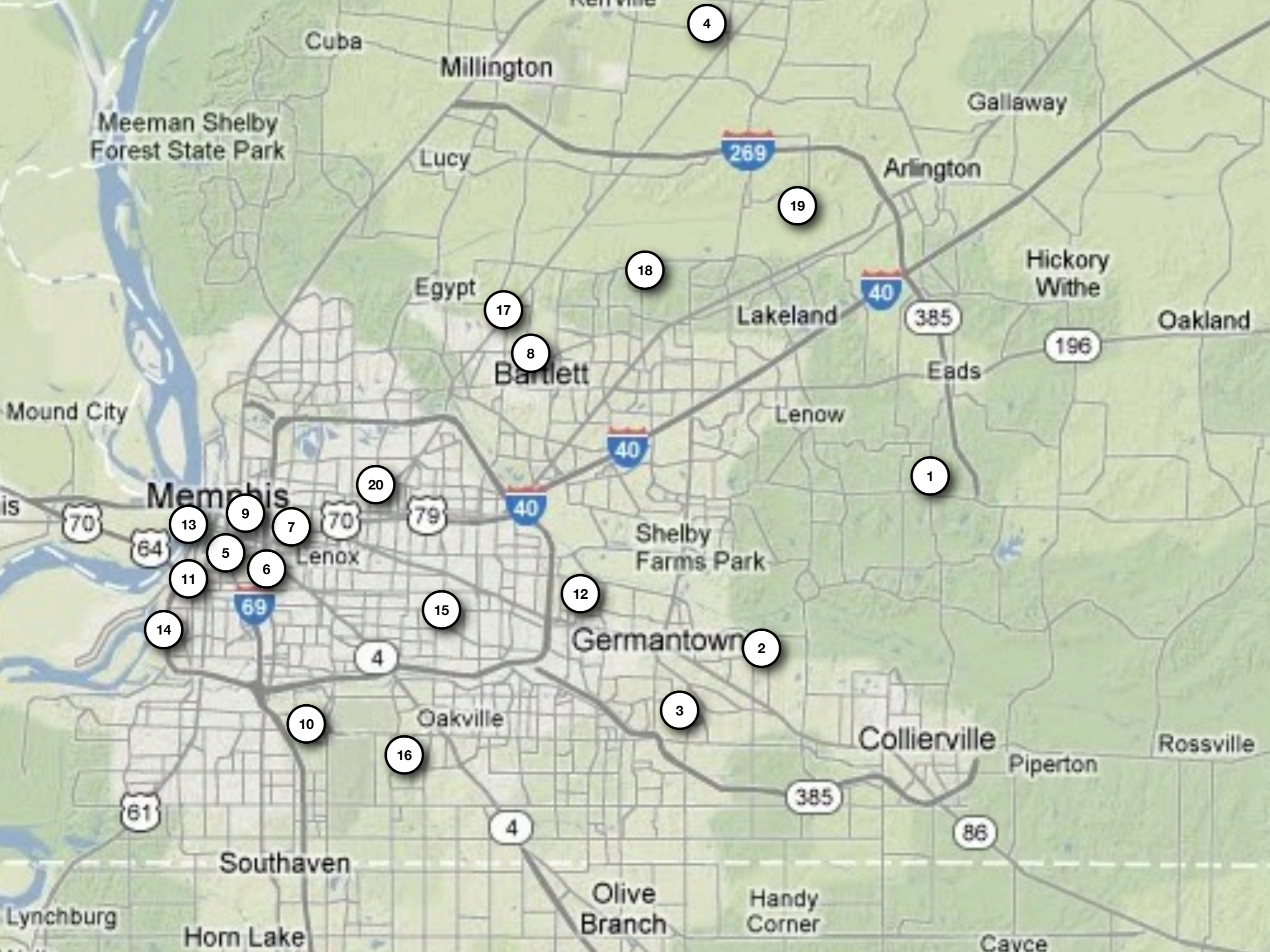
19- 5221 Adagio Ln
Lakeland, TN 38002

20- 814 Scott St
Memphis, TN 38112

Applying Urban Models to Shelby County, TN

Name: _____

Map Location	Urban Model Applied	Description of Location	Explanation of how is applies to the model
1			
2			
3			
4			
5			
6			
7			
8			
9			
10			
11			
12			
13			
14			
15			
16			
17			
18			
19			
20			



Memphis

Germantown

Collierville

Millington

Gallaway

Arlington

Egypt

Lakeland

Hickory Withe

Bartlett

Lenox

Oakland

Mound City

Shelby Farms Park

Eads

64

13

9

7

70

20

79

17

8

40

385

196

1

11

5

6

69

15

12

2

14

4

3

Oakville

16

385

86

Southaven

Olive Branch

Handy Corner

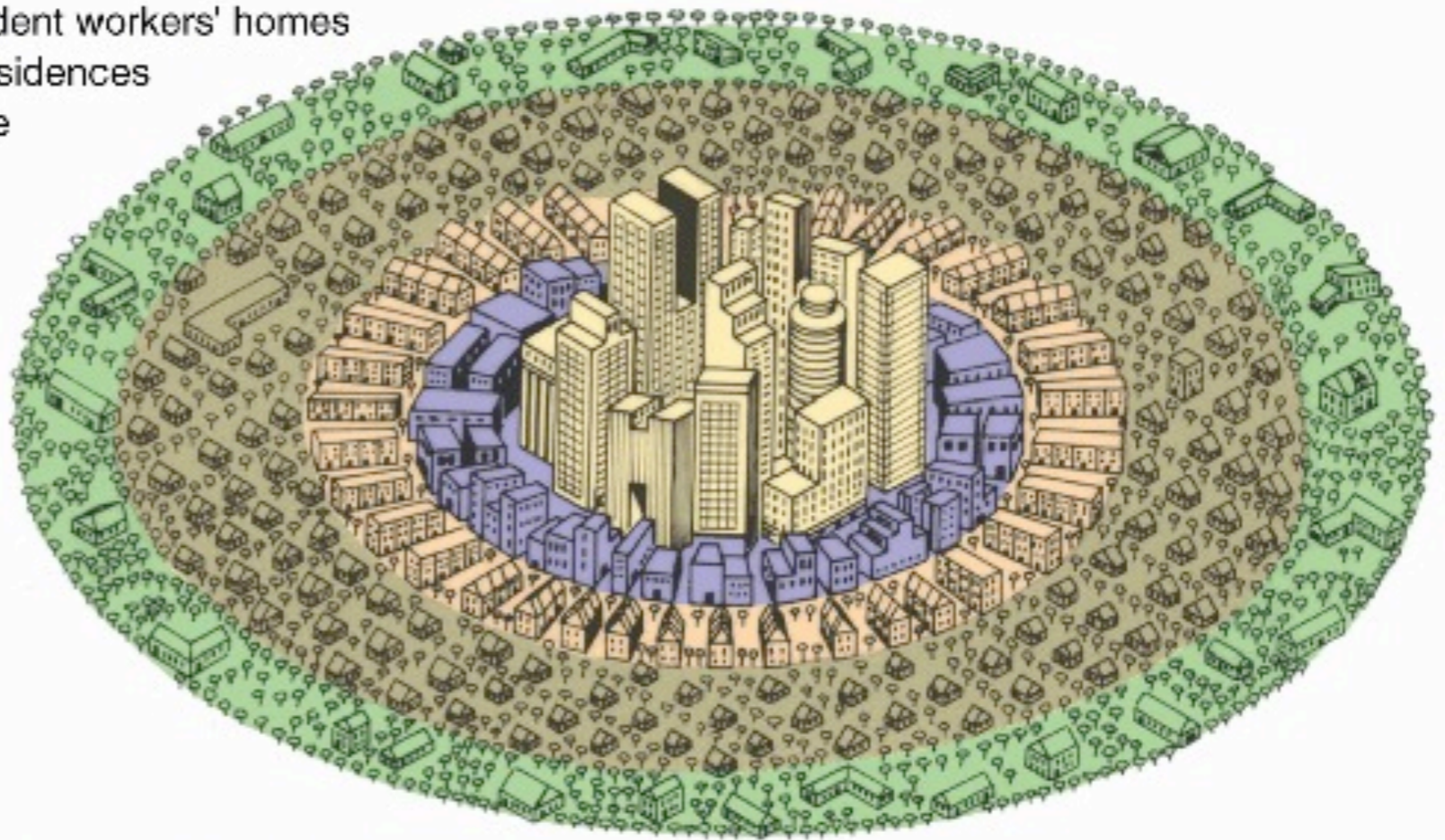
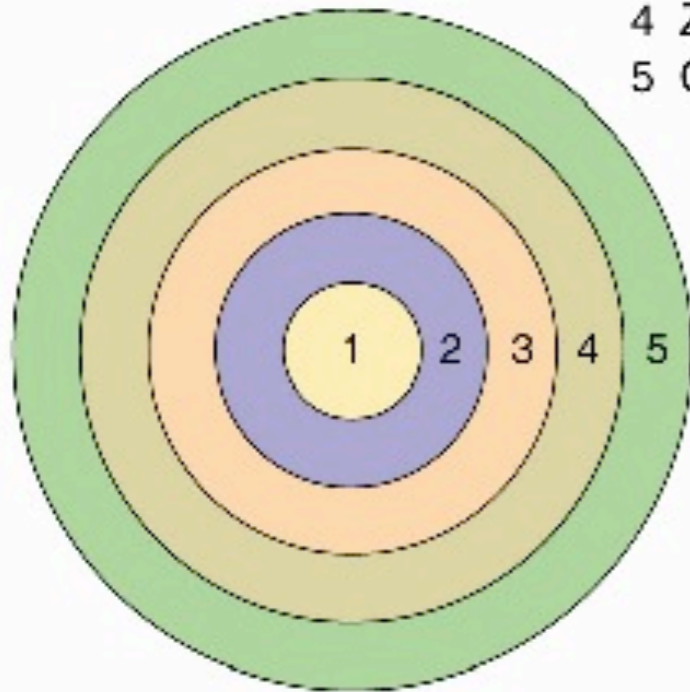
Horn Lake

Cayce

Lynchburg

Concentric Zone Model

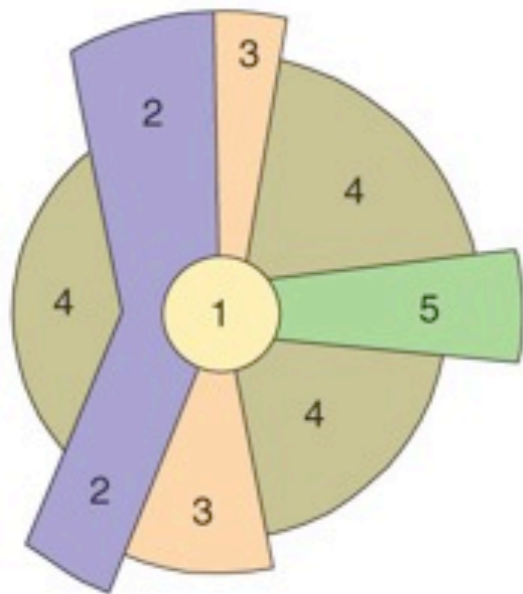
- 1 Central business district
- 2 Zone of transition
- 3 Zone of independent workers' homes
- 4 Zone of better residences
- 5 Commuter's zone



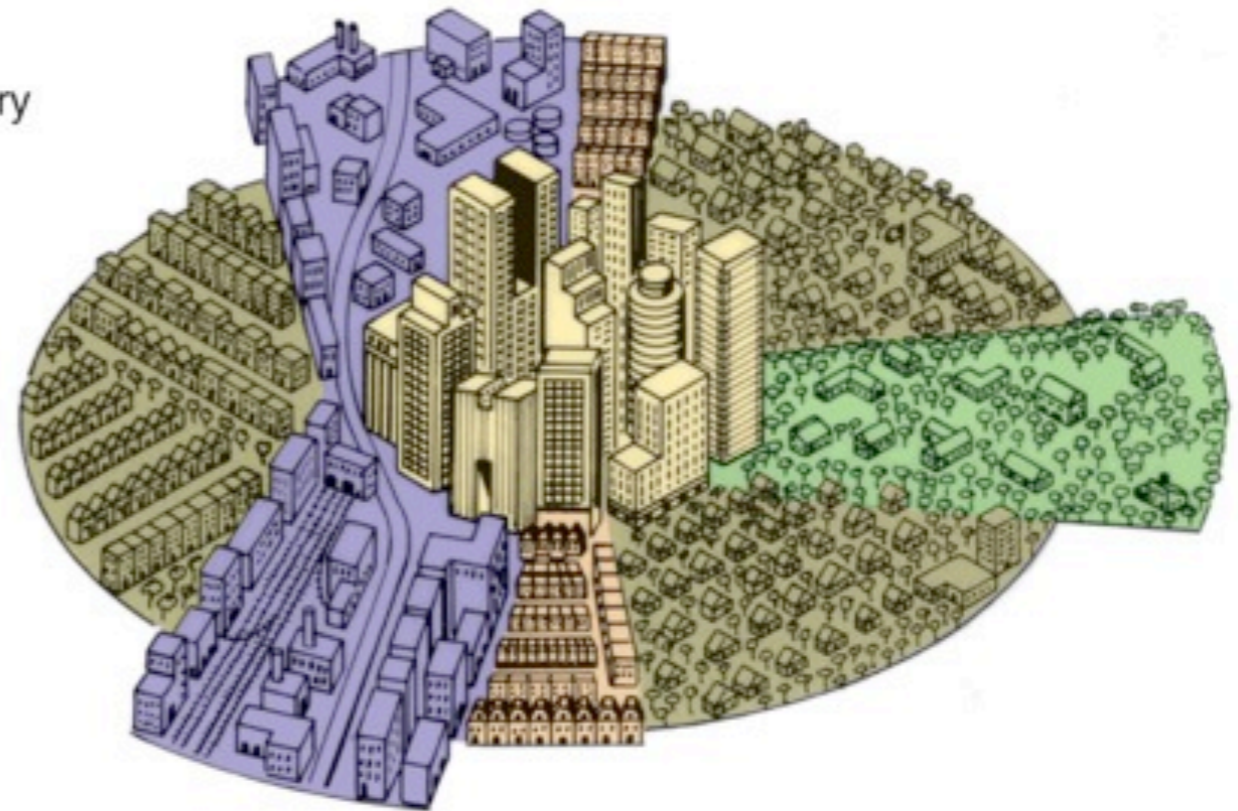
Copyright © 2005 Pearson Prentice Hall, Inc.

Developed in 1925 by Ernest W. Burgess

Sector Model



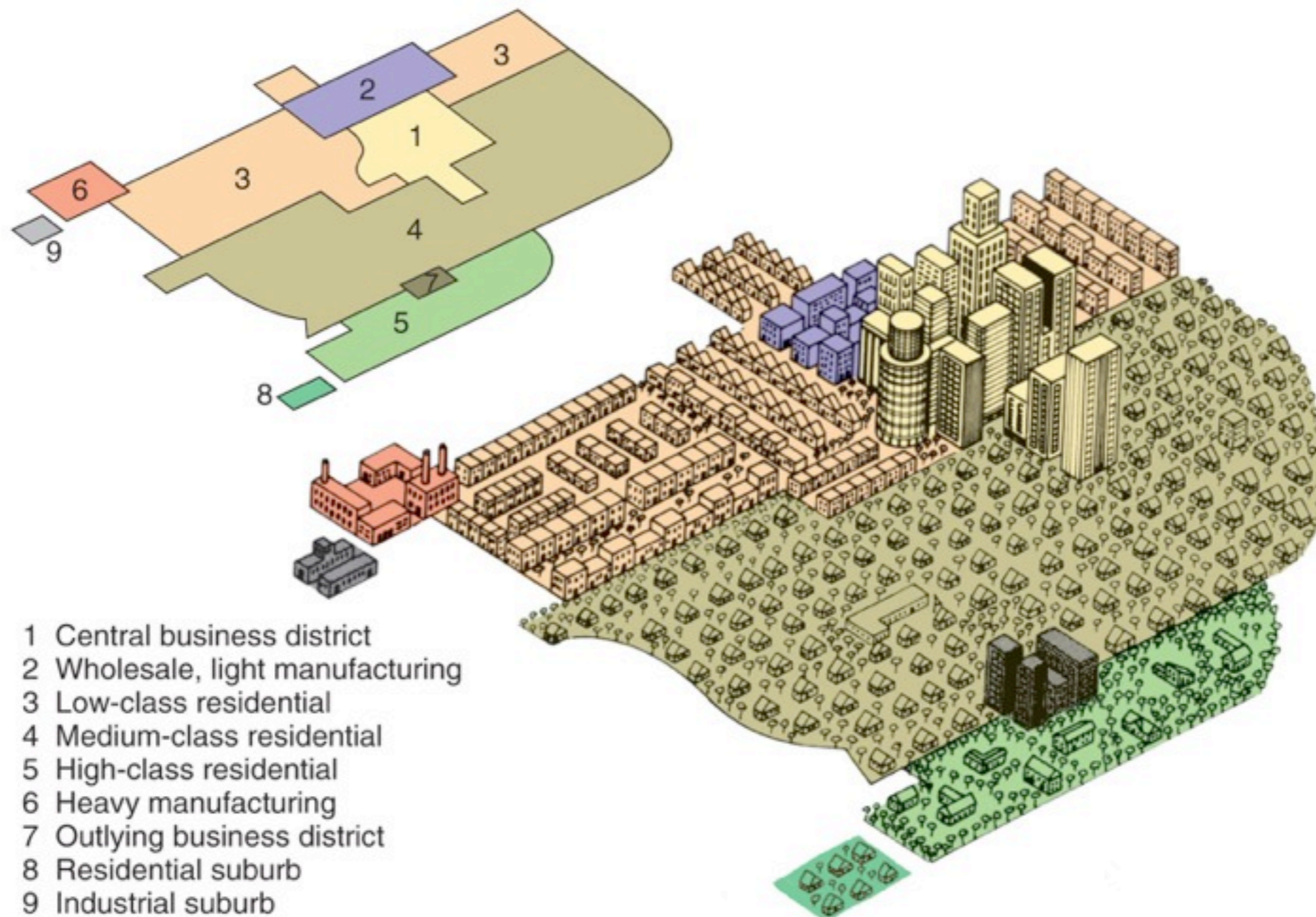
1. Central business district
2. Transportation and industry
3. Low-class residential
4. Middle-class residential
5. High-class residential



Copyright © 2008 Pearson Prentice Hall, Inc.

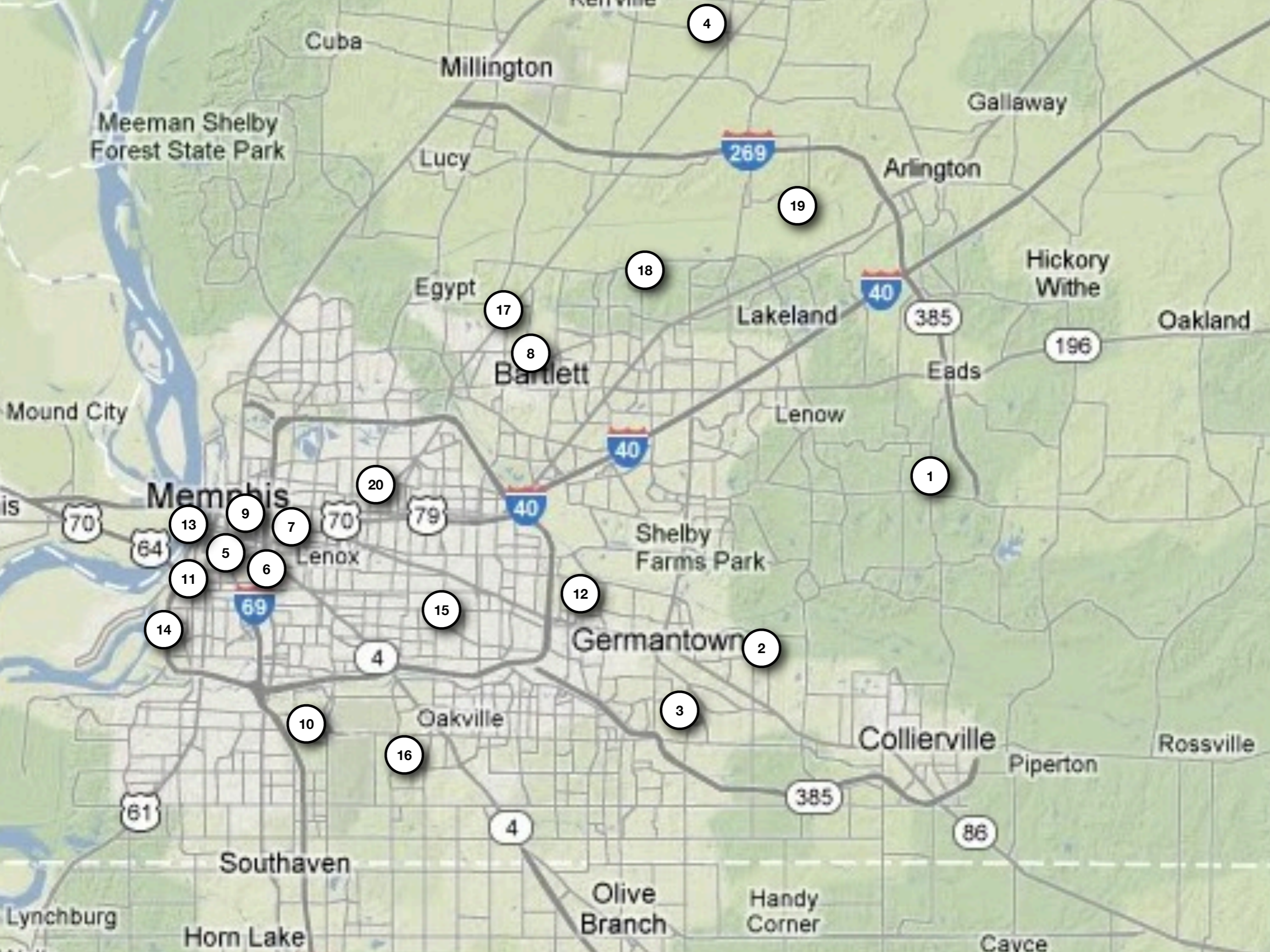
Homer Hoyt, an economist, presented his sector model in 1939

Multiple Nuclei Model



Copyright © 2008 Pearson Prentice Hall, Inc.

Suggested by Chauncey Harris and Edward Ullman in 1945



Memphis

Millington

Gallaway

Arlington

Lucy

Egypt

Lakeland

Hickory
Withe

Oakland

Bartlett

Lenox

Eads

Mound City

Memphis

Lenox

Shelby
Farms Park

Germantown

Oakville

Collierville

Rossville

Southaven

Olive
Branch

Handy
Corner

Lynchburg

Horn Lake

Cayce

1



Example

Applying Urban Models to Shelby County, TN

Name: _____

Map Location	Urban Model Applied	Description of Location	Explanation of how is applies to the model
1			
2			
3			
4			
5			
6			
7			
8			
9			
10			
11			
12			
13			
14			
15			
16			
17			
18			
19			
20			

Applying Urban Models to Shelby County, TN

Name: _____

Map Location	Urban Model Applied	Description of Location	Explanation of how is applies to the model
1		Large Wealthy Homes with Large Lots Far removed from the CBD.	
2			
3			
4			
5			
6			
7			
8			
9			
10			
11			
12			
13			
14			
15			
16			
17			
18			
19			
20			

Applying Urban Models to Shelby County, TN

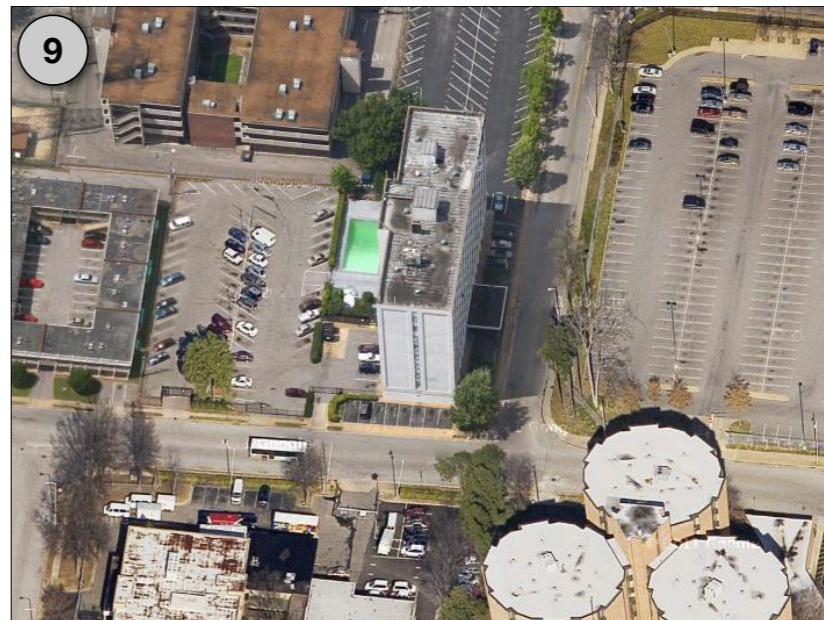
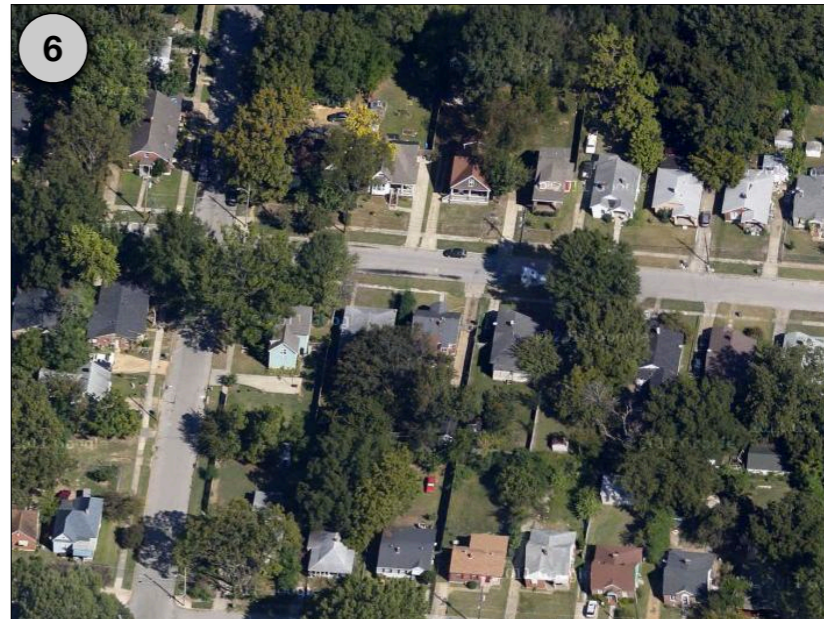
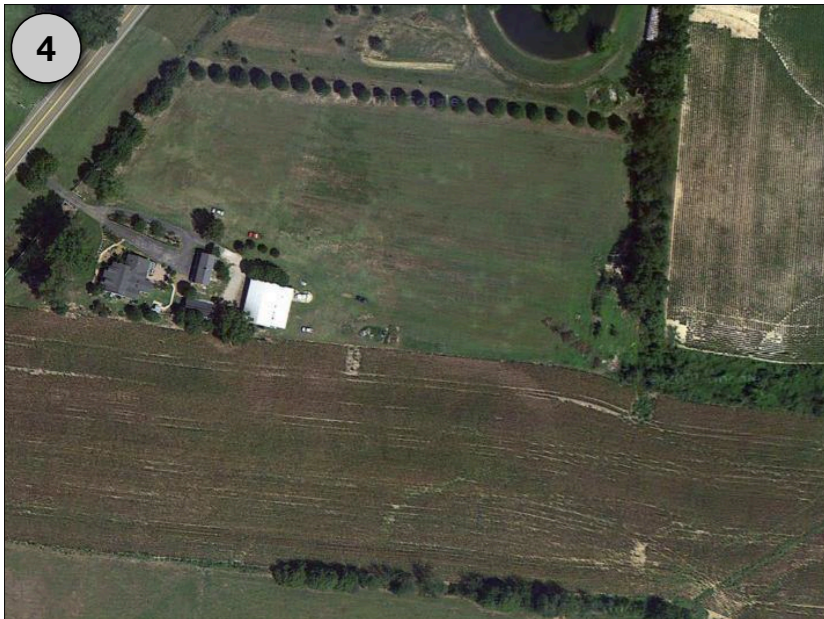
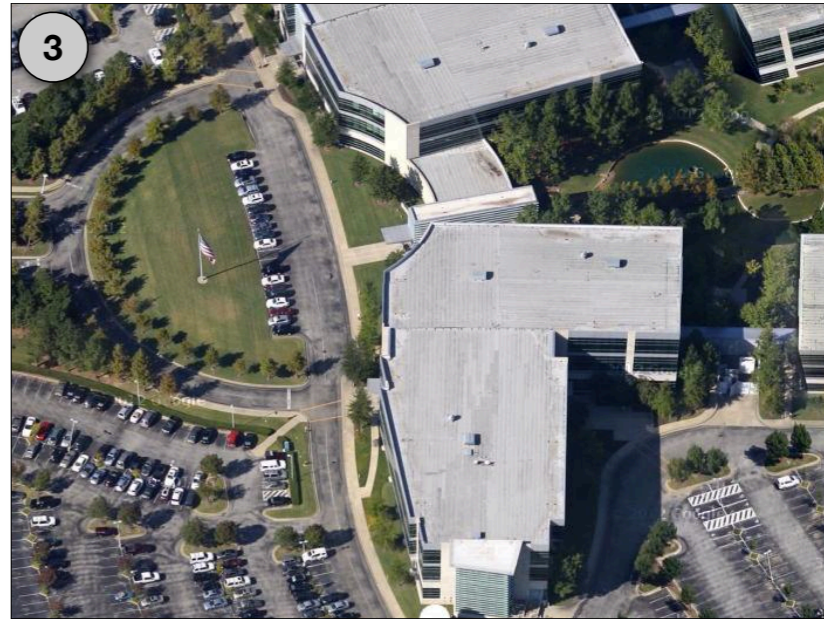
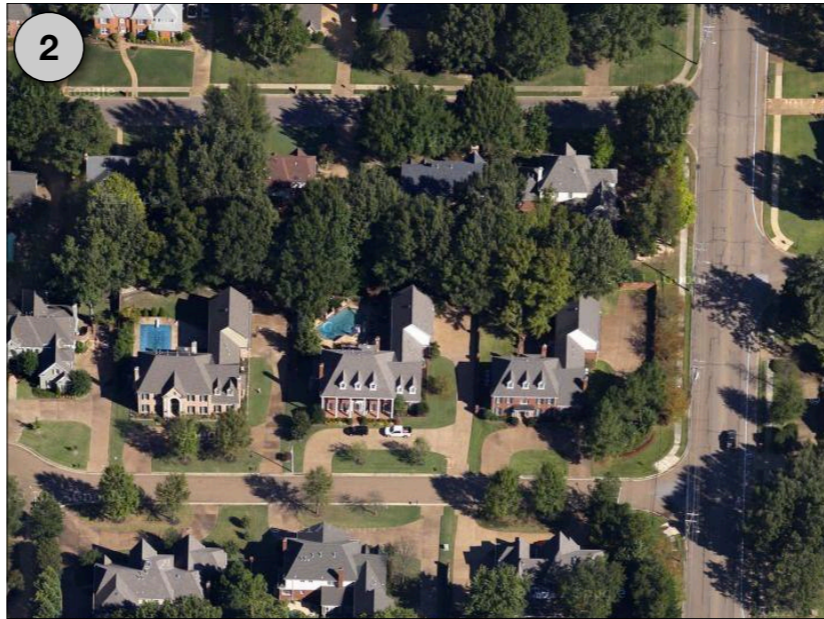
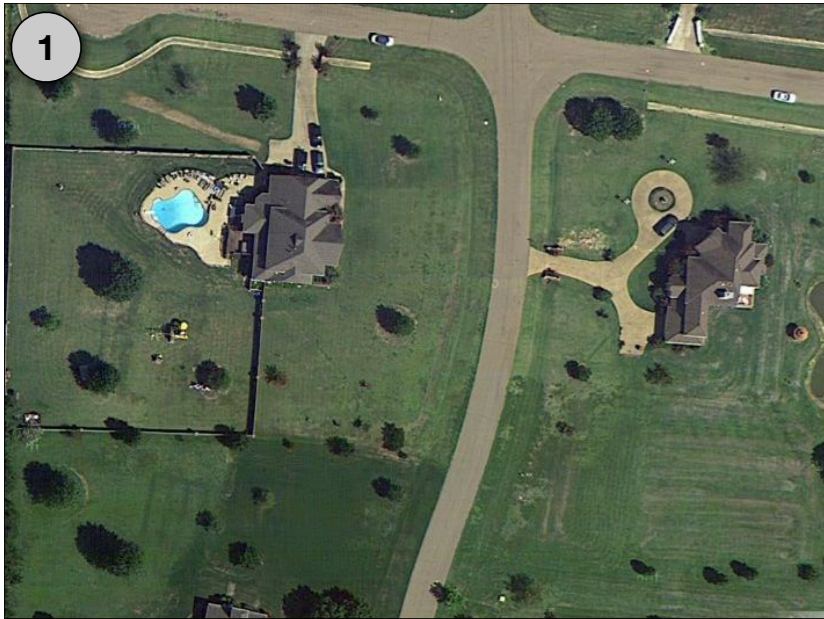
Name: _____

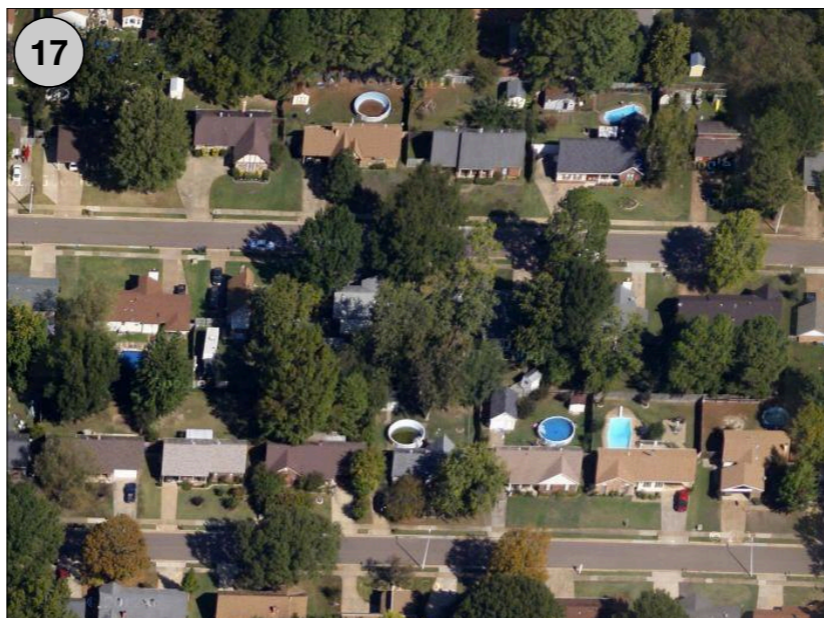
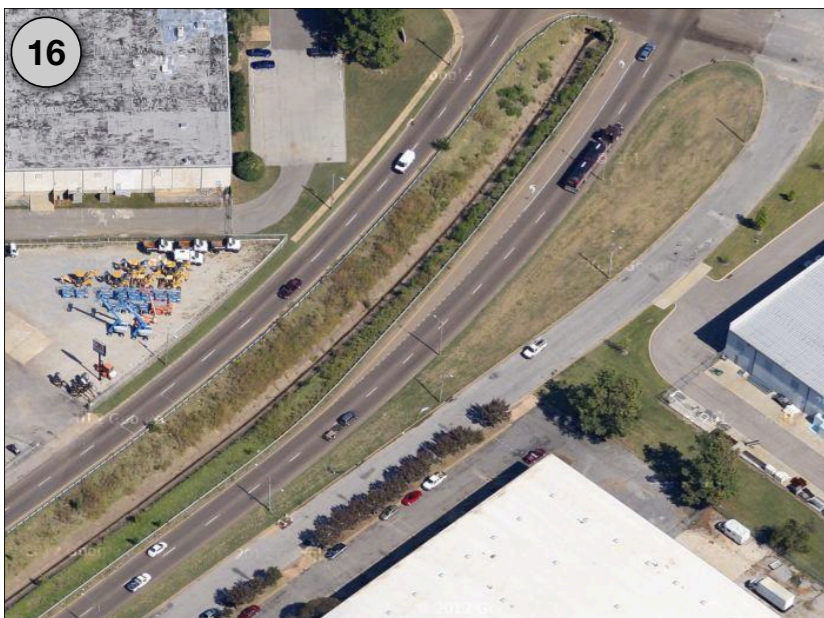
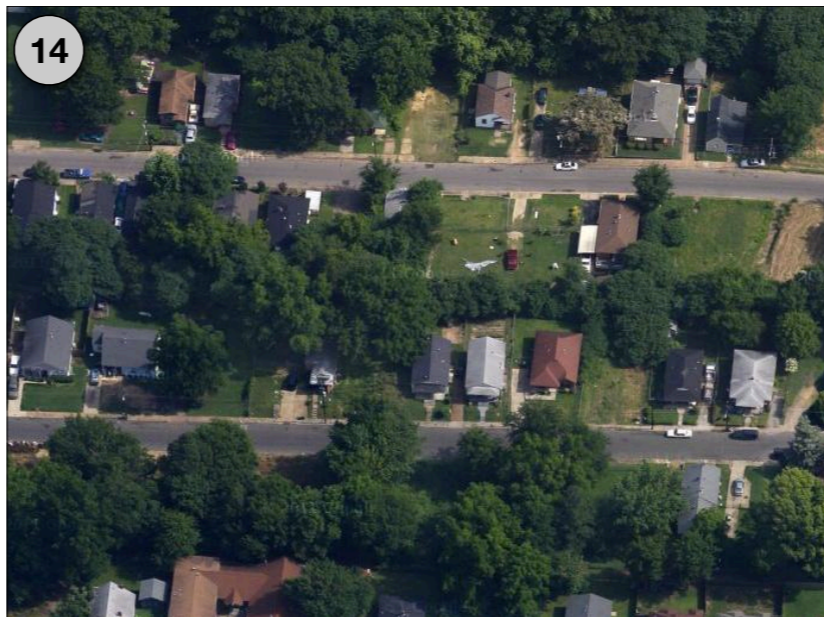
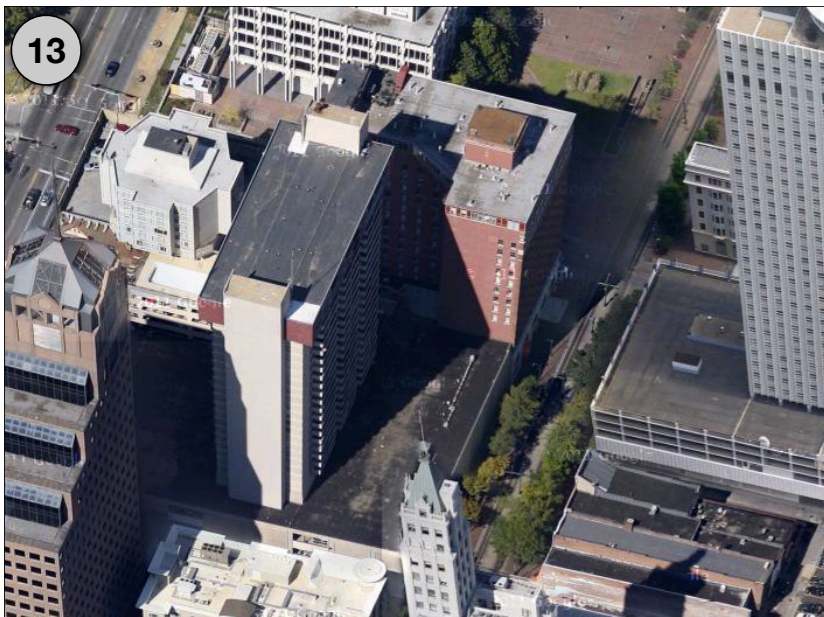
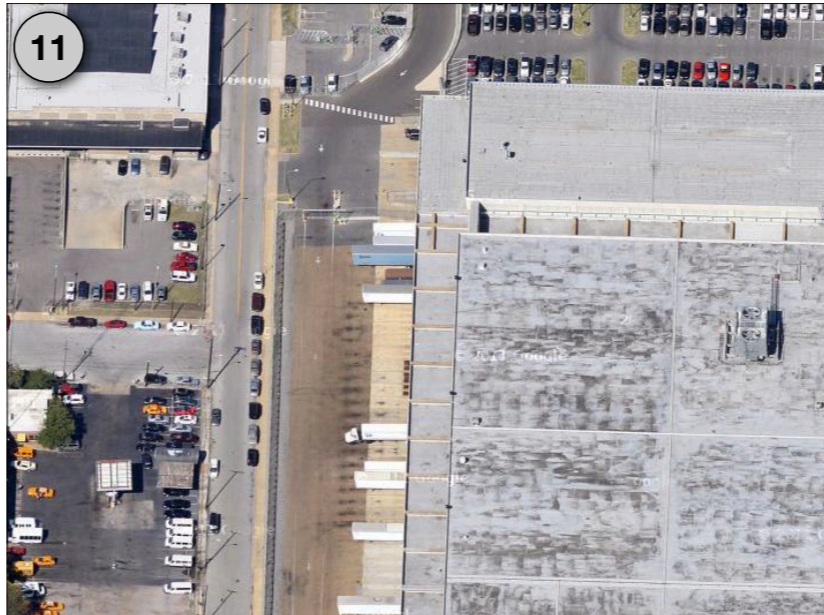
Map Location	Urban Model Applied	Description of Location	Explanation of how is applies to the model
1	More than one answer?	Large Wealthy Homes with Large Lots Far removed from the CBD.	
2			
3			
4			
5			
6			
7			
8			
9			
10			
11			
12			
13			
14			
15			
16			
17			
18			
19			
20			

Applying Urban Models to Shelby County, TN

Name: _____

Map Location	Urban Model Applied	Description of Location	Explanation of how is applies to the model
1	More than one answer?	Large Wealthy Homes with Large Lots Far removed from the CBD.	Which model does the description fit?
2			
3			
4			
5			
6			
7			
8			
9			
10			
11			
12			
13			
14			
15			
16			
17			
18			
19			
20			





1



2



3



4



5



6



7



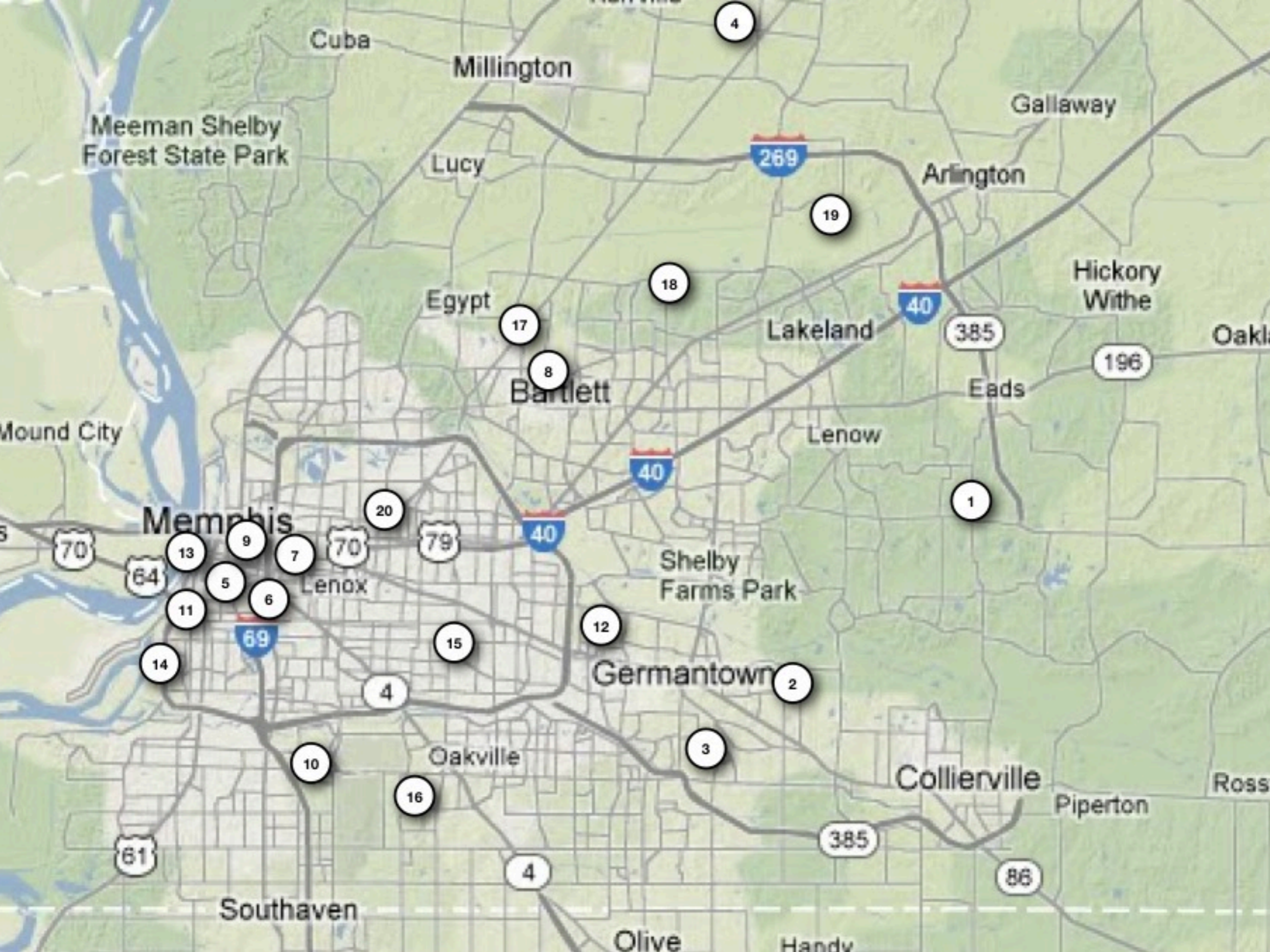


9



10





Cuba

Millington

Galloway

Meeman Shelby Forest State Park

Lucy

269

Arlington

19

Hickory Withe

Egypt

18

Lakeland

385

Oakl

196

17

8

Bartlett

Eads

Mound City

Lenow

40

1

Memphis

20

79

40

Shelby Farms Park

70

64

13

9

7

70

5

6

11

14

69

15

12

Germantown

2

Oakville

3

Collierville

Piperton

Ross

61

10

16

4

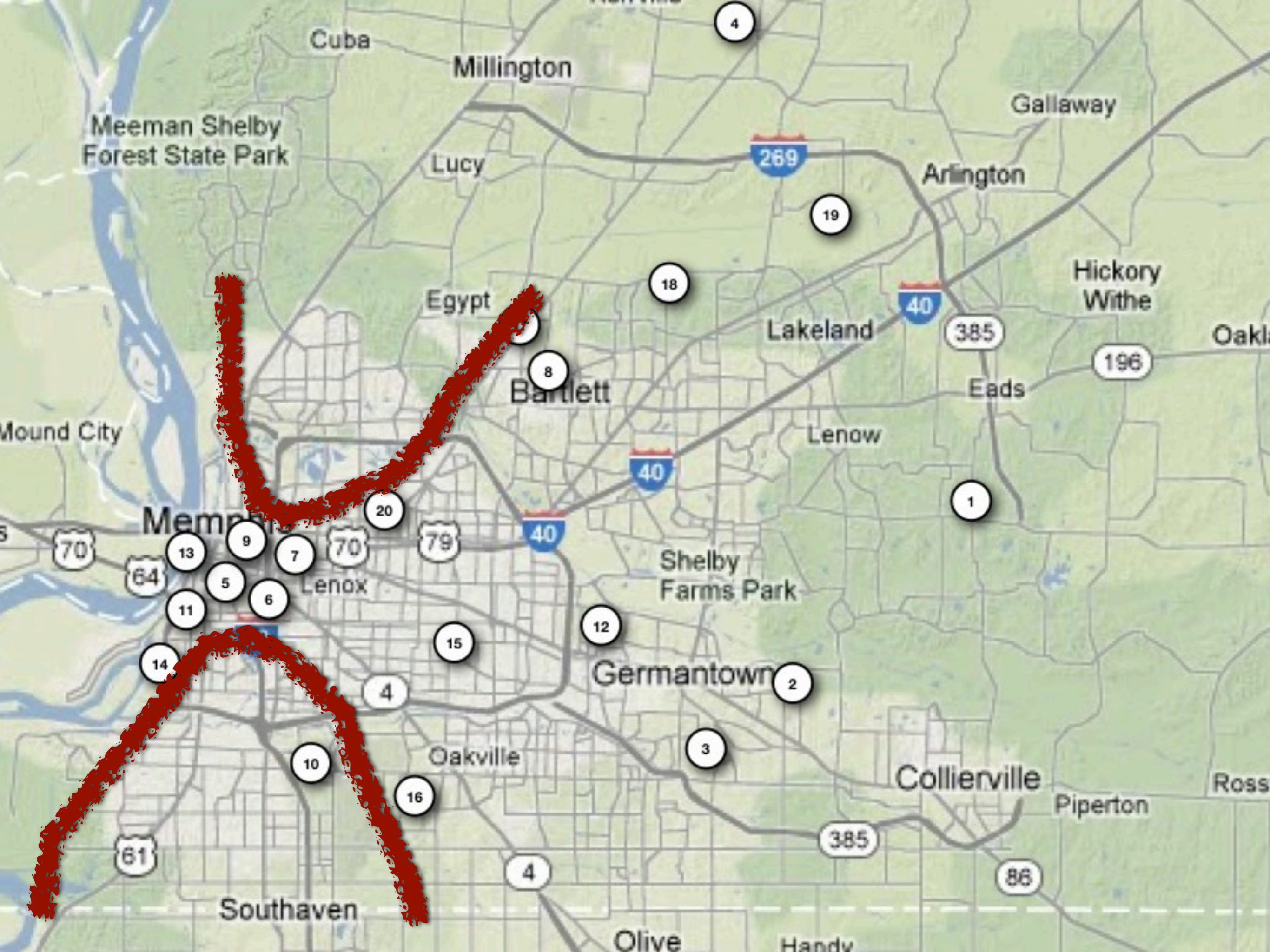
385

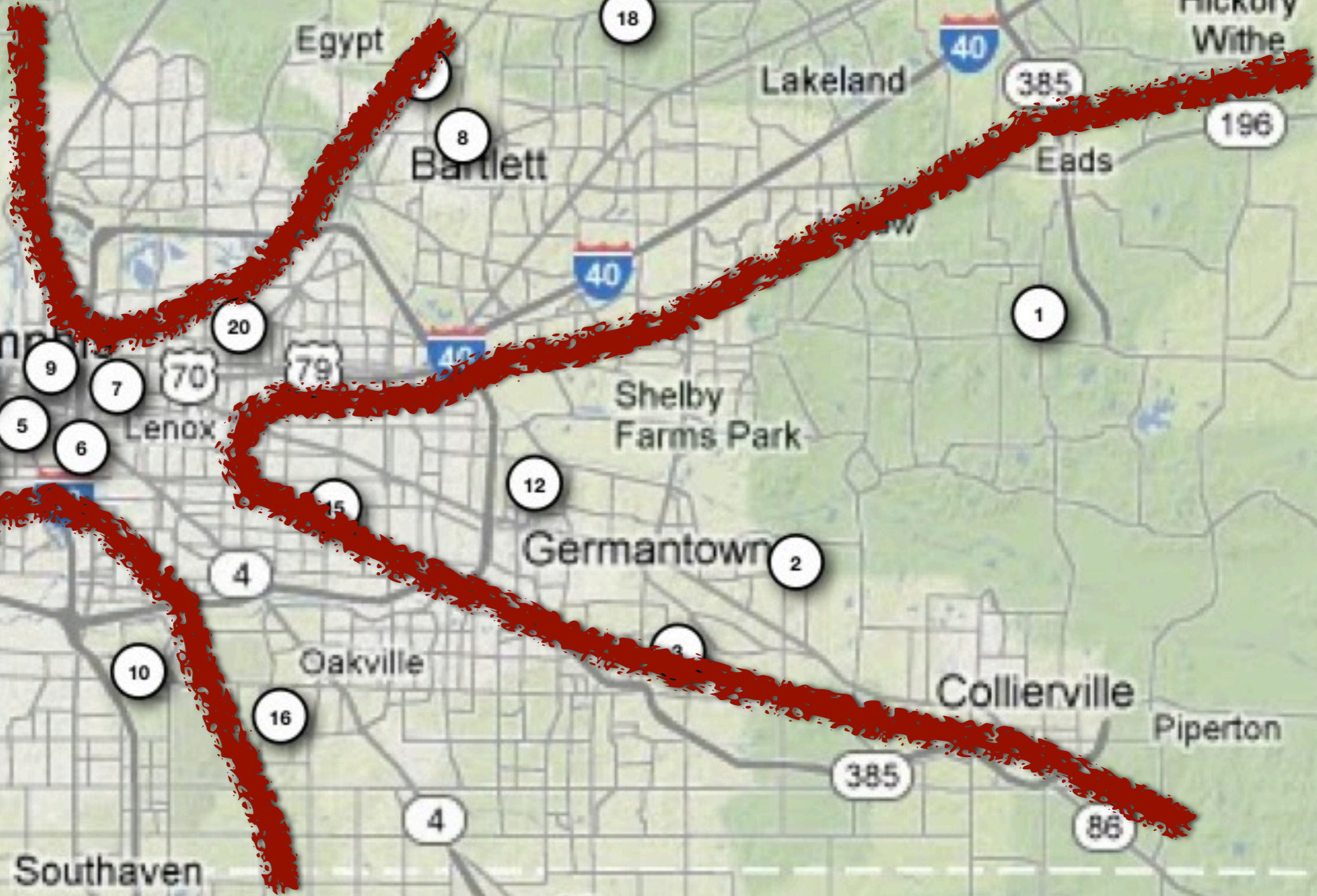
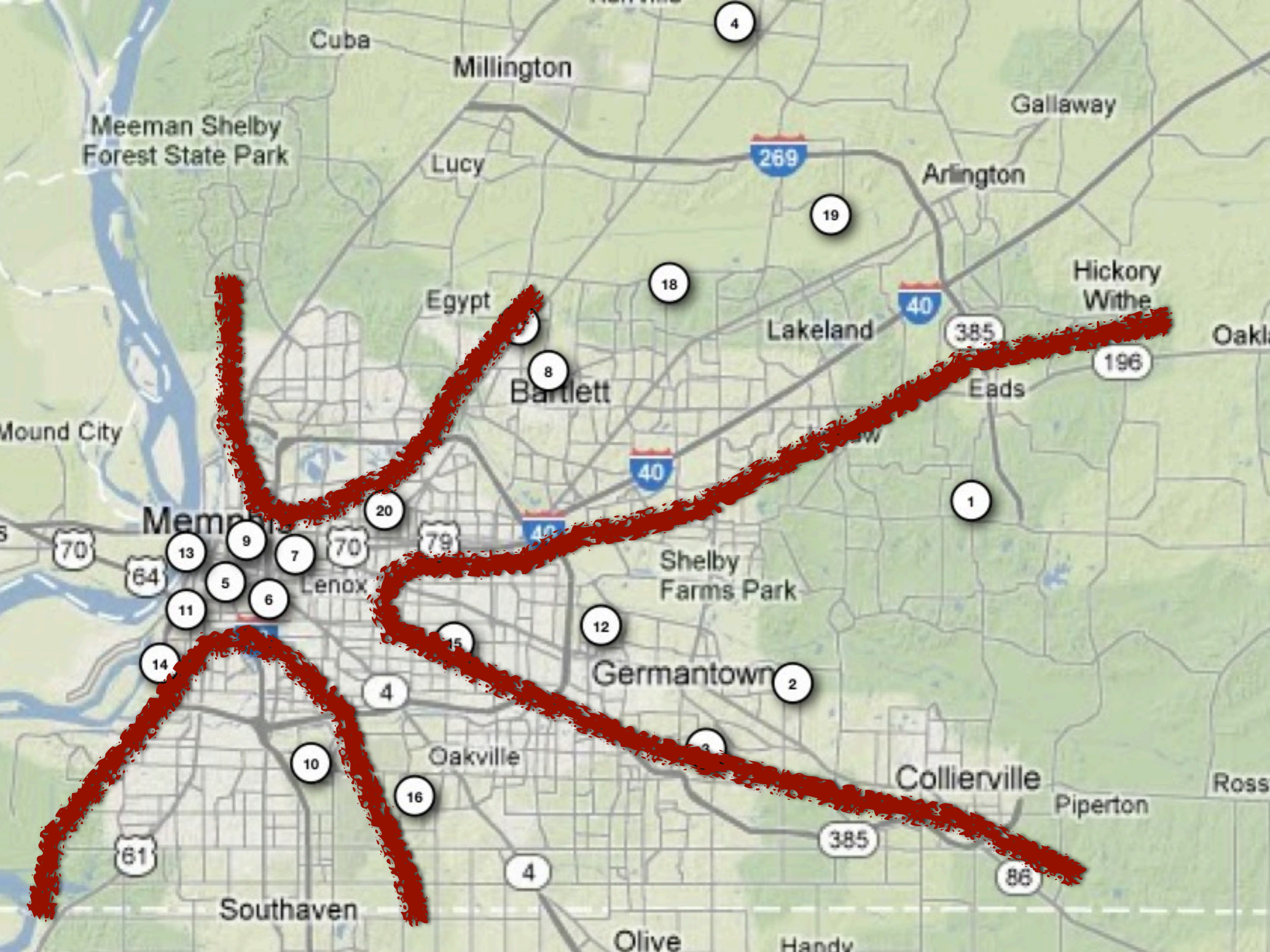
86

Southaven

Olive

Handy





Memphis

Millington

Galloway

Meeman Shelby Forest State Park

Lucy

269

Arlington

Egypt

18

40

Hickory Withe

Lakeland

385

Oakl

8

Bartlett

196

Eads

Mound City

40

1

70

13

9

7

70

79

20

Shelby Farms Park

64

5

6

11

12

15

12

Germantown

2

4

14

Oakville

3

Collierville

Ross

61

10

16

4

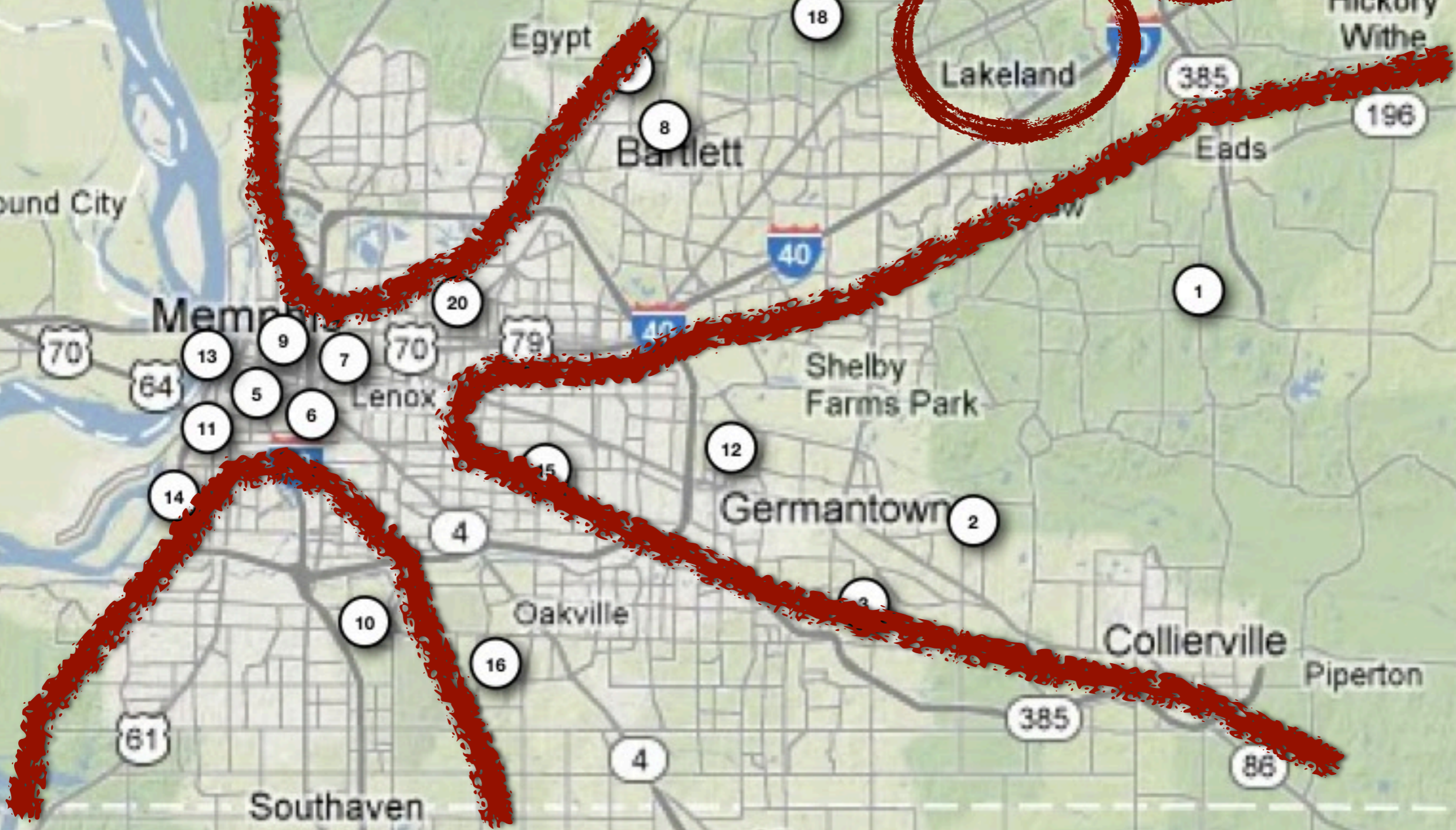
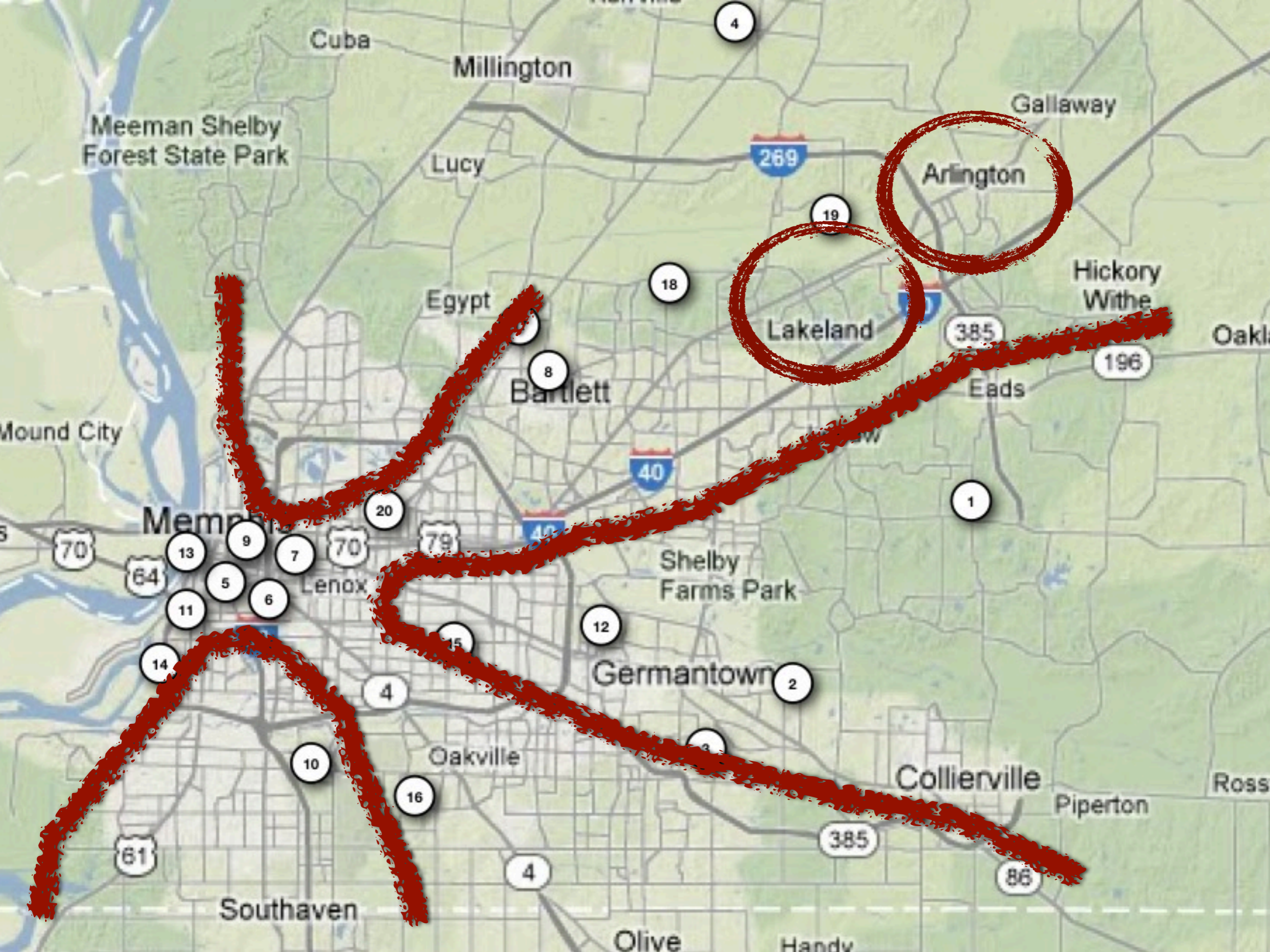
385

86

Southaven

Olive

Handy



11



12





14



15



16



17





19



