

**What would be the vocabulary word?**

# Student Handouts



1



2



3



4



5



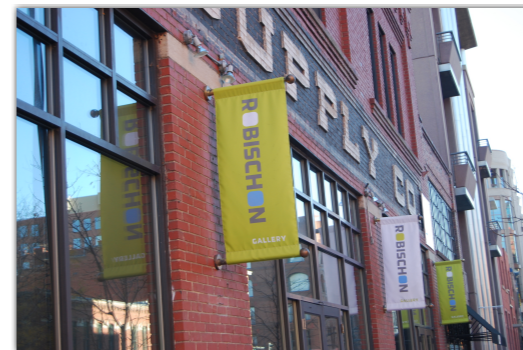
6



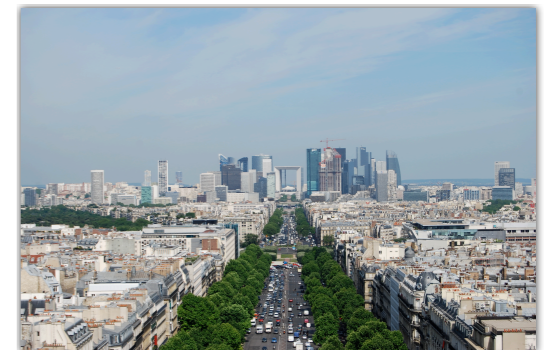
7



8



9



10



11



12



1



2



3



4



5



6



7



8



9



10



11



12

## **Possible Answers**

agribusiness

bilingualism

Concentric Zone Model

cultural landscape

devolution

entrepôt

folk culture

gentrification

globalization

Islamic architecture

material culture

Mediterranean agriculture

plantation agriculture

popular culture

Sector Model

suburban downtown

superimposed

supranationalism

universalizing

# CAUTION!



*Deer May  
Attack  
Your Dog*

Some deer in town will attack without provocation, and can seriously injure or kill a dog. These deer have fawns and will aggressively defend them.

When you see a deer, immediately retreat from the area. Please report any incident to park staff.

---

# ATTENTION!

*Les cerfs  
peuvent attaquer  
votre chien*



Quelques cerfs en ville peuvent attaquer sans provocation et peuvent blesser grièvement ou tuer un chien. Ils ont des faons qu'ils défendent agressivement.

Quittez immédiatement les lieux si vous voyez un cerf. Veuillez signaler tout incident au personnel du parc.

1-800-368-3688

Caradisi

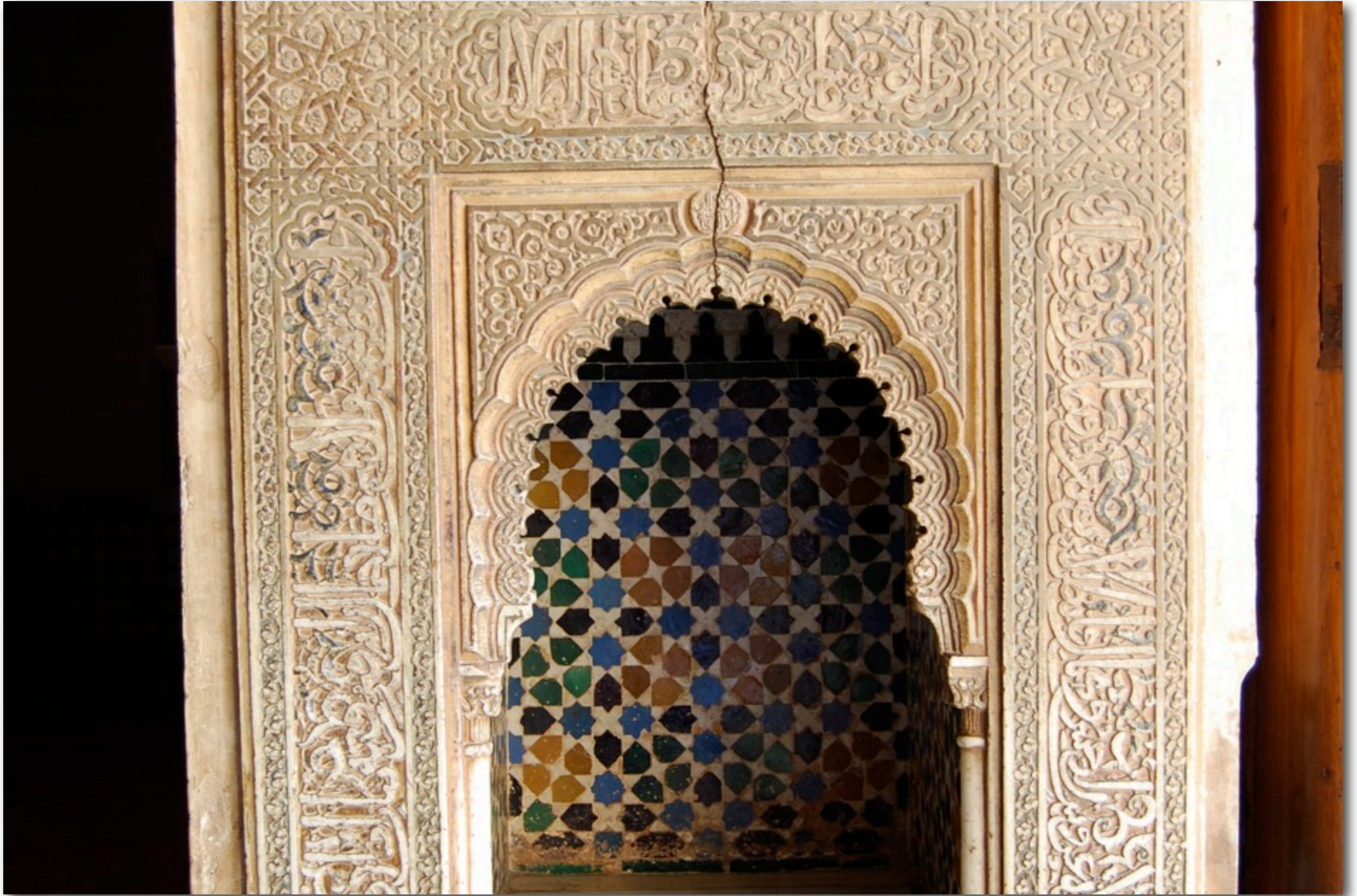
















Con amb Kit Kat

UNxUN

1€











**ANSWERS**



What vocabulary can be applied to this picture?



**bilingualism**

What vocabulary can be applied to this picture?



**What vocabulary can be applied to this picture?**

# agribusiness



**What vocabulary can be applied to this picture?**

# agribusiness



# Plantation Agriculture

What vocabulary can be applied to this picture?



**What vocabulary can be applied to this picture?**





**universalizing**

**What vocabulary can be applied to this picture?**



**What vocabulary can be applied to this picture?**

# entrepôt



**What vocabulary can be applied to this picture?**



**What vocabulary can be applied to this picture?**



superimposed

What vocabulary can be applied to this picture?



**What vocabulary can be applied to this picture?**

# cultural landscape



What vocabulary can be applied to this picture?

# cultural landscape



## Islamic Art/Architecture

What vocabulary can be applied to this picture?





**What vocabulary can be applied to this picture?**



# Mediterranean Agriculture

**What vocabulary can be applied to this picture?**

# devolution (Barcelona)

UNxUN

1€



What vocabulary can be applied to this picture?

# globalization



devolution (Barcelona)

UNxUN

1€

What vocabulary can be applied to this picture?

# globalization

## Popular Culture

devolution (Barcelona)

UNxUN

1€



What vocabulary can be applied to this picture?

**globalization**

**Popular Culture**

**devolution** (Barcelona)

UNxUN



**supranationalism**

What vocabulary can be applied to this picture?



**What vocabulary can be applied to this picture?**



What vocabulary can be applied to this picture?





**What vocabulary can be applied to this picture?**

# suburban downtown



**What vocabulary can be applied to this picture?**



**What vocabulary can be applied to this picture?**



# Sector Model

**What vocabulary can be applied to this picture?**

# Concentric Zone



# Sector Model

What vocabulary can be applied to this picture?



**What vocabulary can be applied to this picture?**



What vocabulary can be applied to this picture?

**material culture**



**Folk Culture**

**What vocabulary can be applied to this picture?**