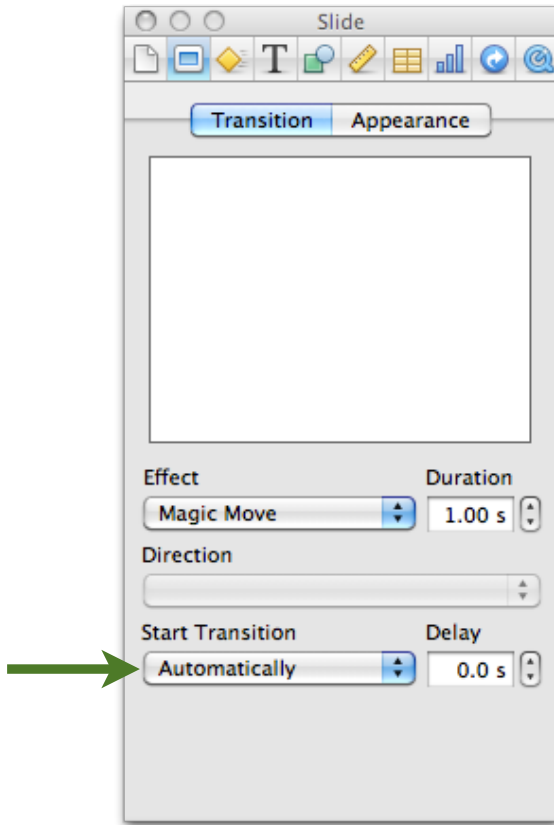
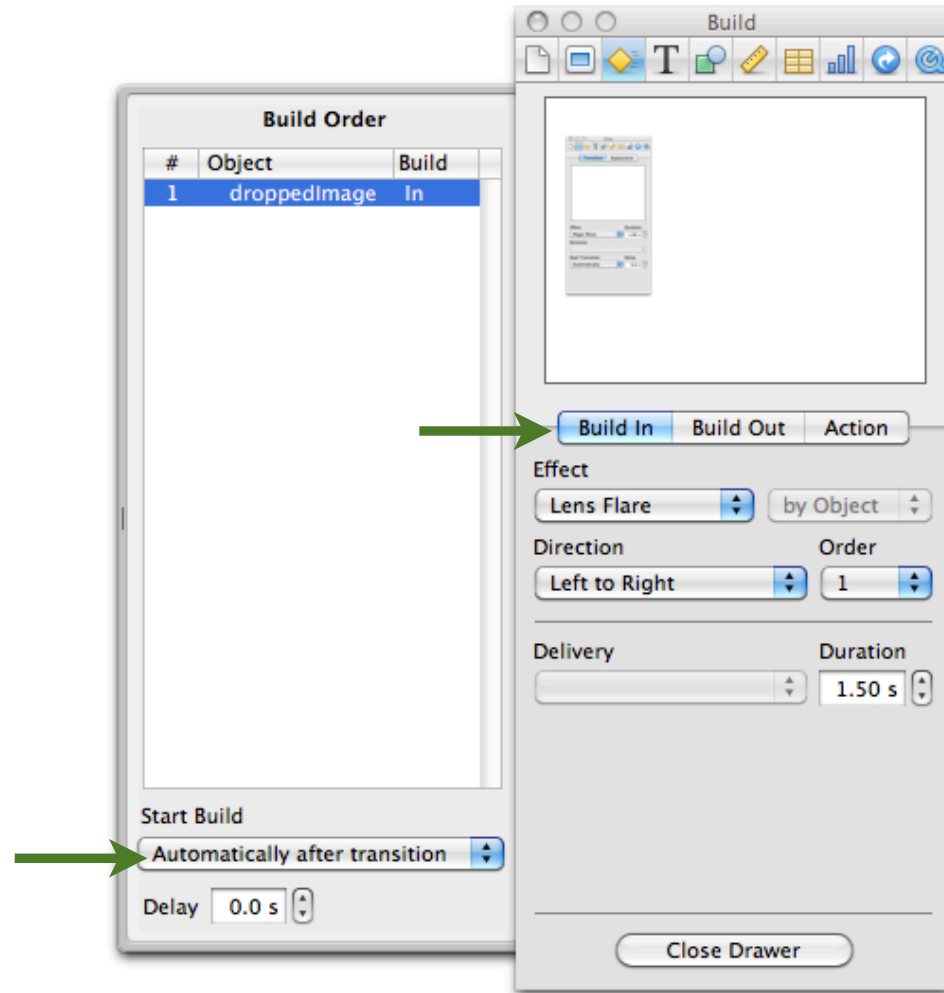


Do NOT leave *Slide* or *Build* set on Click

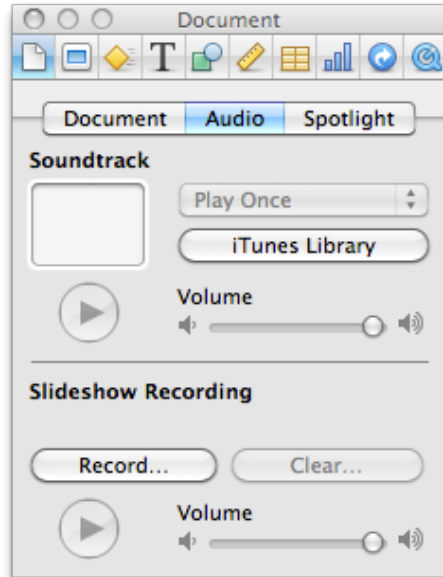


Slide
Must be set to "Automatically"

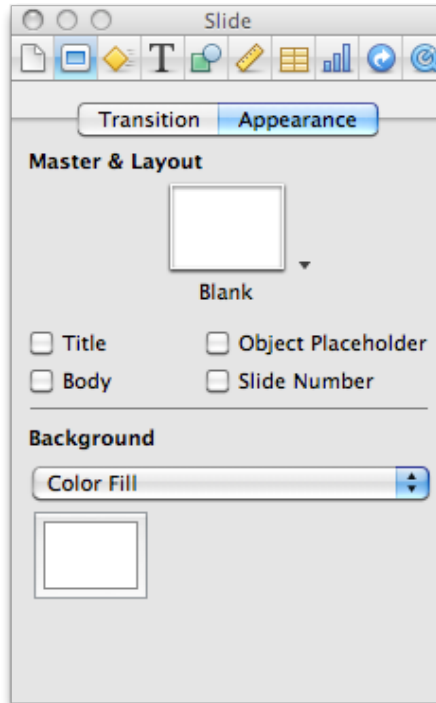


Build
Must be set to "Automatically after (or with) transition"
The Build Order is the order in which text, images, and videos are added to or removed from the slide.

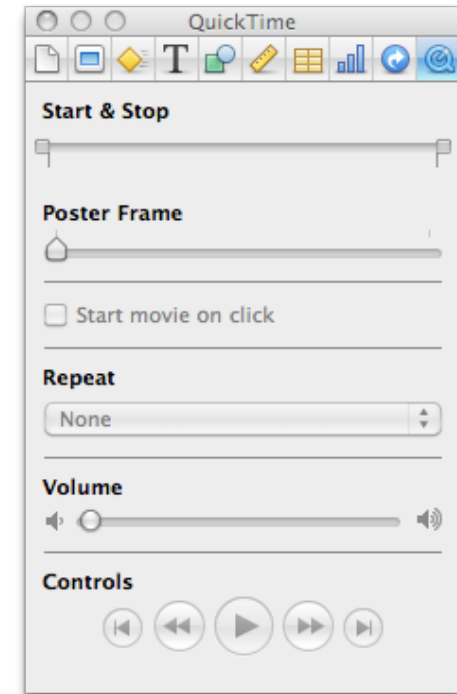
Useful Directions



- Document**
- add Music
 - record dialogue



- Slide (Appearance tab)**
- change the slide layout
 - change the Background color



- QuickTime**
- select the start and stop for the video and/or song
 - control the volume of the video and/or song
 - do NOT select "Start movie on click"

Practice Example #1

Transition

Slide

Transition Appearance

Practice Example #1


Effect: None

Duration: []

Direction: []

Start Transition: Automatically

Delay: 0.0 s




Adding Media

music, photos, video

Media

Audio Photos Movies

GarageBand iTunes

Name	Artist	Time
Exile	Enya	4:21

Q- exile 1 item



Music / Video Settings

QuickTime

Start & Stop

00:03:49.70 00:04:21.78

Poster Frame

Start movie on click

Repeat: None

Volume

Controls

00:00:00.00 00:00:32.08



Builds In and Out

Build Order

#	Object	Build
1	05 Exile-1	In
2	└ DSC_0051	In
3	DSC_0051	Out
4	└ Kindertrans...	Out
5	DSC_0049	In
6	└ Trains to D...	In
7	DSC_0049	Out
8	└ Trains to D...	Out
9	DSC_0053	In
10	└ Trains to Life	In
11	DSC_0053	Out
12	└ Trains to Life	Out
13	The Kindertra...	In
14	The Kindertra...	Out

Start Build

Delay: 5.0 s

