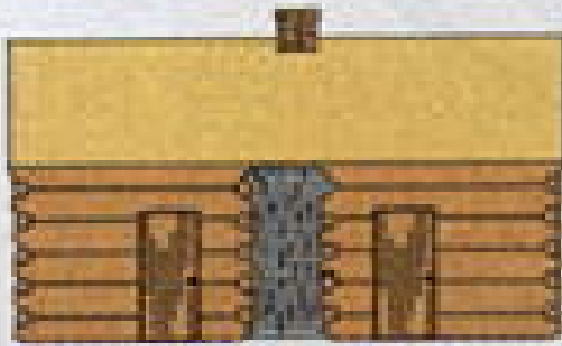
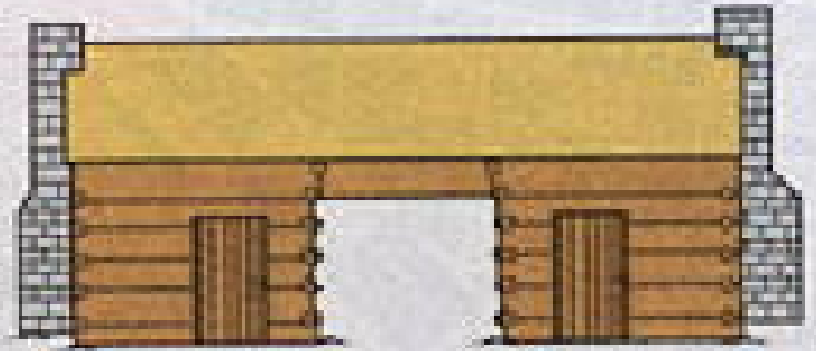


# Selected Folk houses

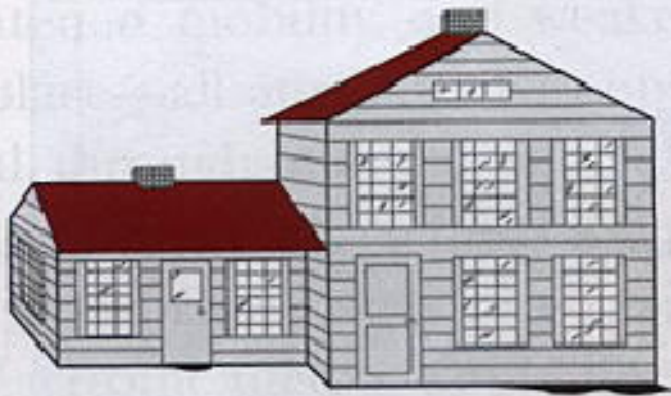


Upland Southern  
log "saddlebag" house,  
front view



Upland Southern  
log "dogtrot" house

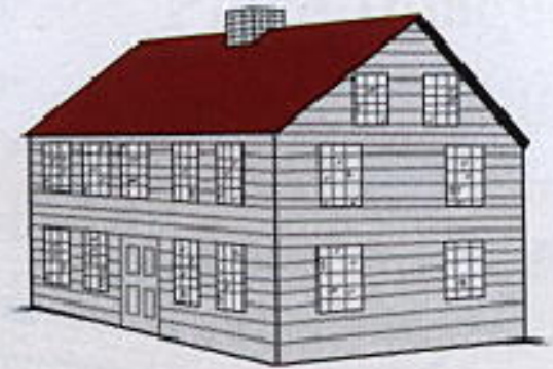
# Selected Folk houses



Yankee "upright and wing"

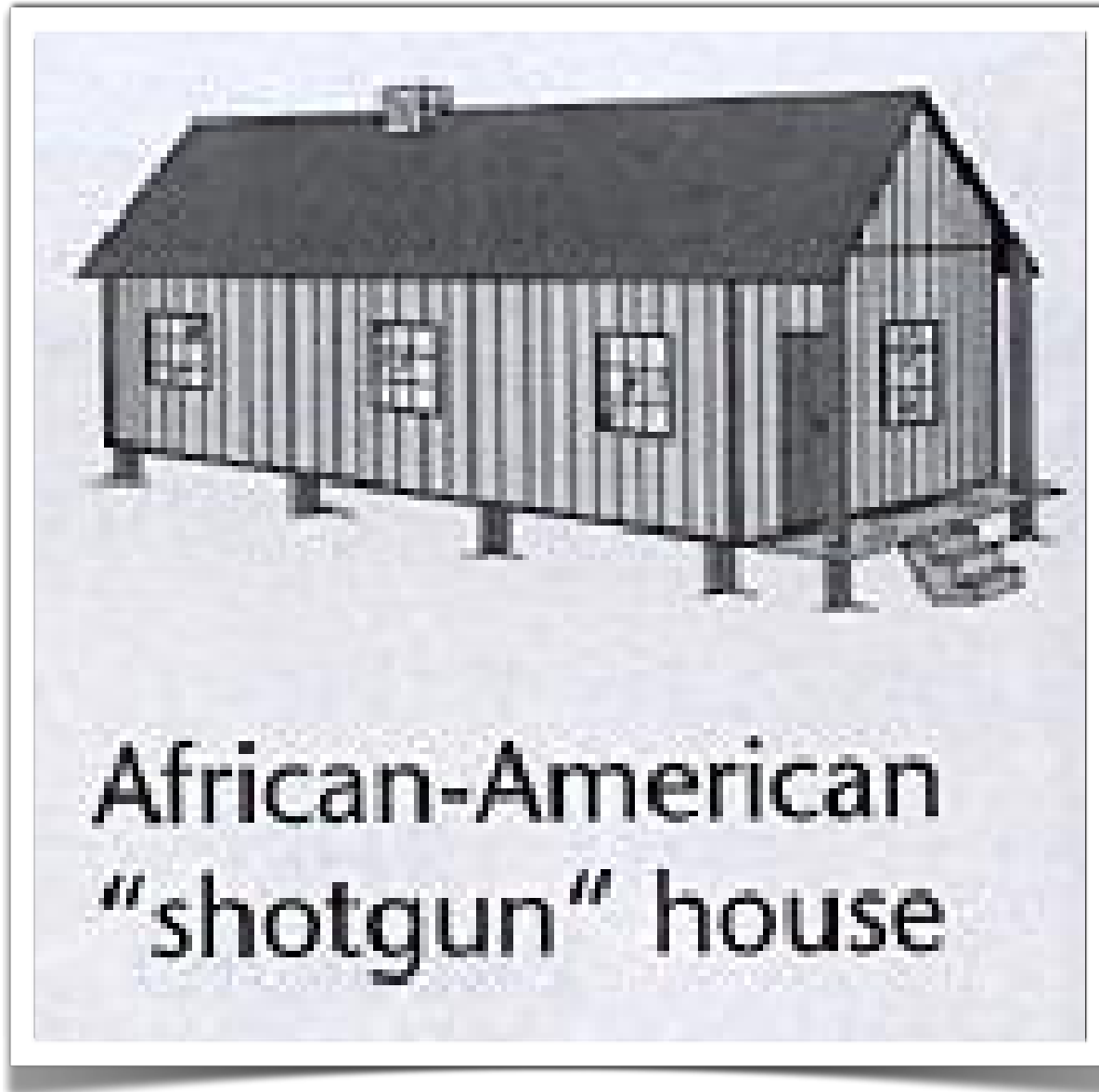


Yankee "Cape Cod"



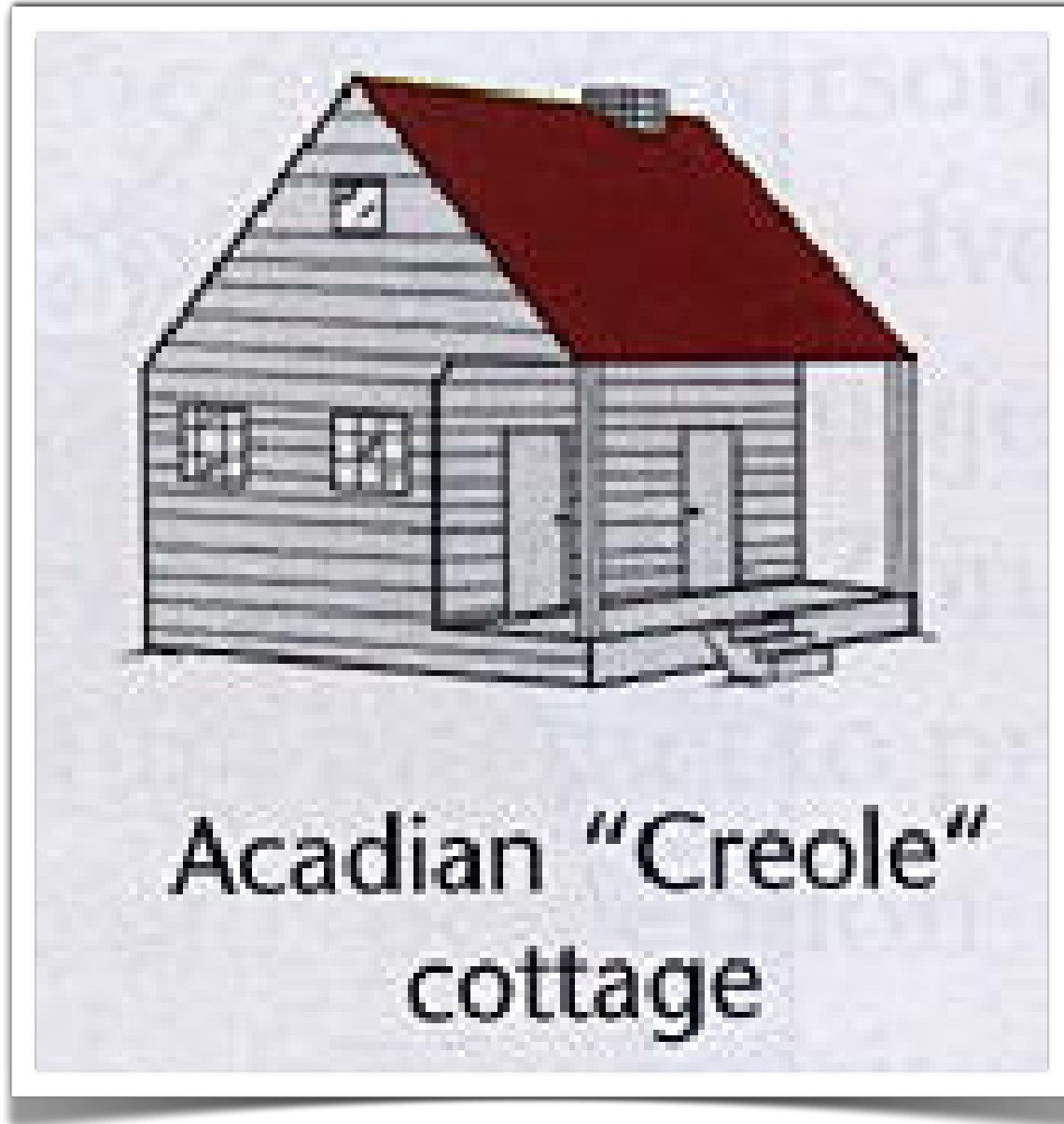
Yankee New England  
"Large"

# Selected Folk houses

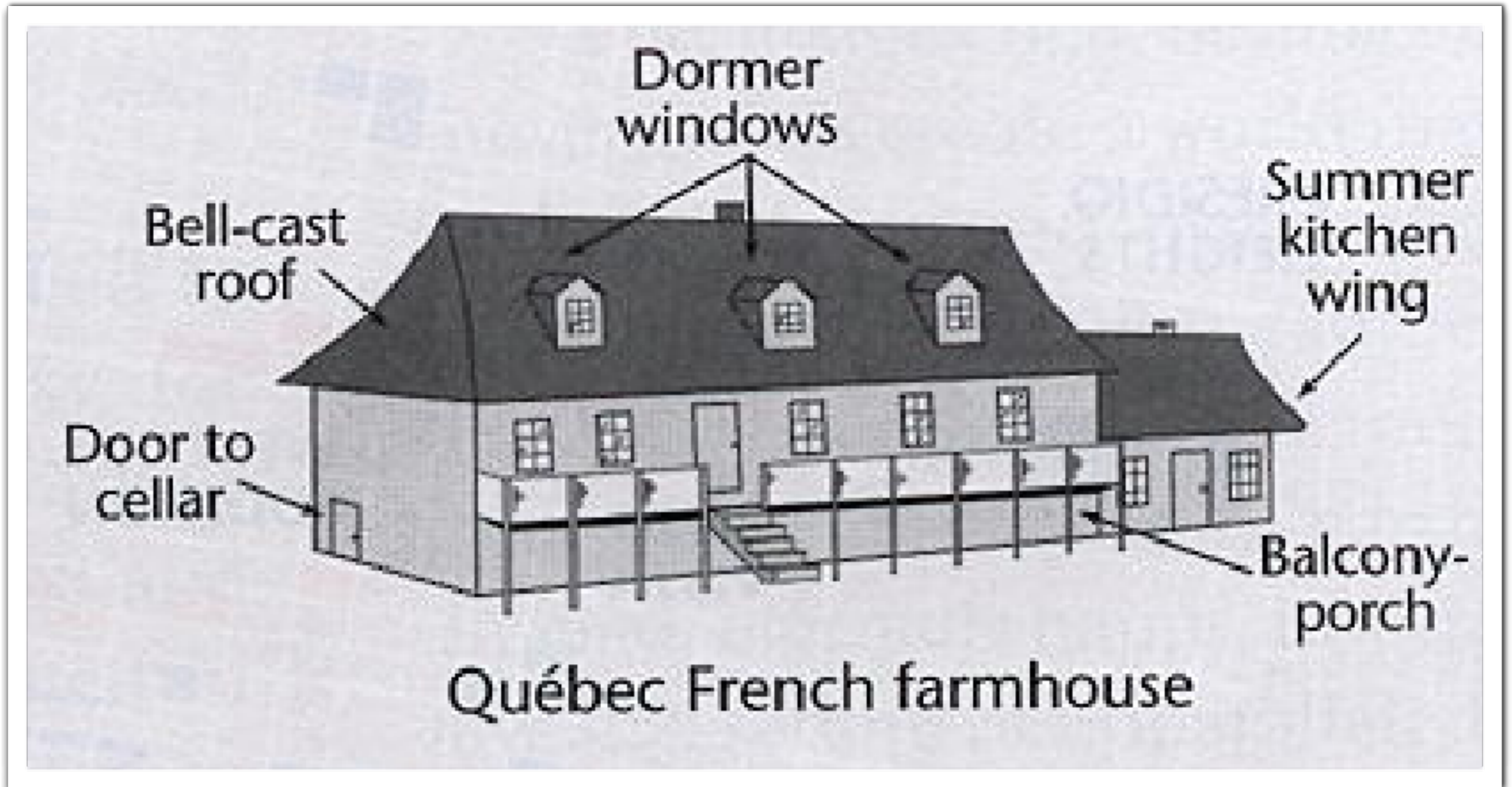


African-American  
"shotgun" house

# Selected Folk houses



# Selected Folk houses



# Selected Folk houses



Upper Canadian  
"Ontario" farmhouse



a



b



c



d

# **Answers: Selected Folk Houses**

- a. French-Canadian farmhouse
- b. New England “large” house
- c. Yankee upright-and-wing house
- d. shotgun house



Polygonal  
folk homes

# Buriat Mongol yurt in Siberia



a

# Navajo hogan in New Mexico



b

# Lower St. Lawrence

---

- Norman cottage
- two-room Quebec cottage
- Montreal house (stone / more in cities)



(a)

• Norman cottage



(b)

• two-room Quebec cottage



(c) • Montreal house (stone / more in cities)

# New England Houses



# garrison house: second floor overhang



(a)

saltbox asymmetrical gable roof



(b)



# Georgian-style New England large house



(c)

upright-and-wing or lazy-T



(d)

# New York Dutch house













# Middle Atlantic Houses

I house two rooms on each floor



(b)

# four-over-four house



(a)

The South

# The Charleston single house

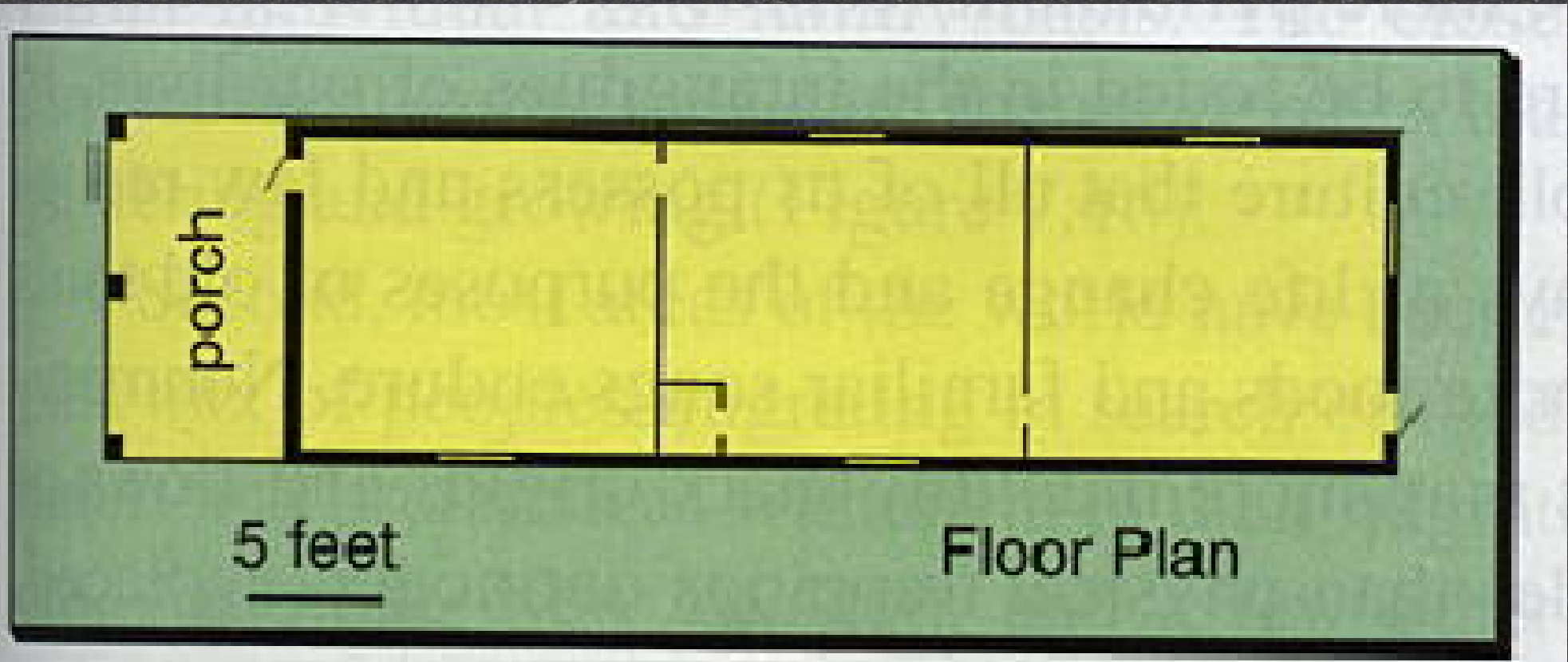


# The Shotgun house



(a)





(b) Ionization and diversified settlement, we are

# Additional House Types











↑ Stesen KTMB Rasa

**HONDA**

KEAG MOTO SIKAL  
SUKKAT CHUAN MOTOR  
蘇摩多公司

GUINNESS

RESTORAN SUN HOE HUAT  
新和發酒家

RESTAURANT  
HONG SOON

n









LANVILLE

MOBSTER





House Types in your neighborhood...

1- McMansions

2- Ranch

3- Upright and Wing or Lazy T

4- Contemporary / Modern

5- Saltbox

Your home is like...

Brick Contemporary

Postmodern- since 1950's/1970's





















# Preindustrial Housing Types

Give the best letter for each  
of the traditional houses.

# Preindustrial Housing Types

---

\_\_\_\_\_ 1. Yurt

\_\_\_\_\_ 2. Maasai  
house (Inkajijik)  
Manyatta Camp

\_\_\_\_\_ 3. Stone

\_\_\_\_\_ 4. Sod

\_\_\_\_\_ 5. Reed

\_\_\_\_\_ 6. Dogon  
village in Mali

\_\_\_\_\_ 7. Thatch-  
Sumatra, Indonesia



A



# B



both climate and a new ethnic and cultural mix altered the

C



D



The Interior of the Messing Chapel in Norway

E



Figure 1.8 Buildings of the Lower Setiawance basin region

**F**



G



# Preindustrial Housing Types

---

C 1. Yurt

B 2. Maasai  
house (Inkajijik)  
Manyatta Camp

A 3. Stone

F 4. Sod

G 5. Reed

E 6. Dogon  
village in Mali

D 7. Batak-  
Sumatra, Indonesia



C









***A travel yurt  
in the back of a SUV***



***Wood parts of a travel yurt***



***Wood parts, connected***



***Assembling a travel yurt***



***Assembled wood frame***



***A fully assembled travel yurt***

